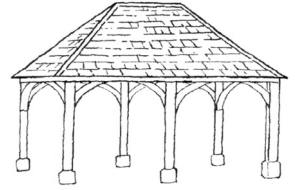


Charlbury Chronicle



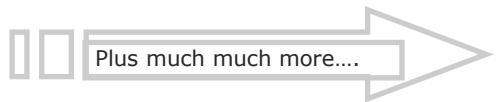
Volume 28 Number 2

Summer 2024

The Charlbury Chronicle is a free quarterly local community publication run by volunteers covering news and events for Charlbury and the surrounding area

Inside this issue:

Charlbury Museum	2
Coffee Break Page	10
Charlbury Community Workshop	16
Riverside Festival	17
Charlbury Beer Festival	18
Charlbury Arts	24
Charlbury Church Services	26
Charlbury Cricket Club	28
1st Charlbury Scouts	42
Community Directory	47



Contacts:-

Editor: editor.chronicle@outlook.com
Advertising: adverts.chronicle@outlook.com
Distribution: walkermaureen542@gmail.com

Charlbury Garage

Hixet Wood, Charlbury, OX7 3SB
01608 810898

08:30 – 17:00 Monday to Friday

Attending to motorists' needs for over 40 years, we offer a local, friendly, helpful & trustworthy service

- MOT & Pre-MOT
- Tyres & Exhausts
- Servicing
- Batteries
- Aircon
- Bodywork

Competitive tyre prices

Half-price MOT with Full Service
Courtesy car available
Cars bought & sold



www.charlburygarage.co.uk

From the Editor

Open Gardens will be happening on 9th June, in conjunction with the Garden Society and Street Fair. All proceeds raised will go towards the upkeep of the Corner House and Memorial Hall. Please do come and support them.

On 29 June, our very own Beer Festival is taking place on the Cricket Pitch.

The Museum is celebrating 75 years of existence and will be holding a historical walk around the Playing Close on 25 August.

Riverside will be held on the Mill Field on 20-21 July. Wilderness will again be holding their festival at Cornbury Park on 1-4 August.

Street Fair are still looking out for helpers; both on Street Fair day and the day after.

The Charlbury Festival will be happening from 23-26

August at various venues around Charlbury. See p24 and more details on the Charlbury website.

And on 26 August the Cricket Club will be celebrating their 150 anniversary—see more details on p28.

Or you can watch the Euros on a large screen at the Cricket Club from 14 June to 14 July!

Congratulations go to Liz Leffman for being elected on to the West Oxfordshire District Council.

If you have any ideas on what else you would like to see in the Chronicle, please do contact me at:-

editor.chronicle@outlook.com

Have a great summer!

Susanna Finch

**Please note the deadline for articles for the Autumn issue is 1st August 2024
Please send all articles to *editor.chronicle@outlook.com***



Charlbury Museum & Heritage Centre

The museum's displays on the 'Beating the Bounds' tragedy in 1924 is the featured special exhibition this season. We have been pleased to welcome visitors with family connections to that event in 1924, the archive photographs have been especially popular and are a unique record of that day. The displays will be on show until the end of September.

If you have not stepped into the museum for a few years, why not take a wander into the fascinating past of Charlbury and discover more about the town.

Coming soon:

Charlbury Museum & Heritage Centre will be taking part in the **Charlbury Festival 2024** (August 23 – 26) and leading an historical walk around a favourite place in Charlbury: The Playing Close. This event introduces a project that the museum and a few volunteers have been researching in preparation for an exhibition in 2025.

Uncovering hidden histories, facts and myths intertwine to inspire a guided walk: who was Thomas Gifford? Did long-bow archers practice there? ... Why a house is called 'Egypt'?

We look forward to seeing you for a Sunday morning stroll around The Playing Close on August 25th.

Opening times: Saturdays 10.30 – 12.30, Sundays & Bank Holiday Mondays 2.30 – 4.30 Adults: £2 Children free

Sue Rangeley - Trustee

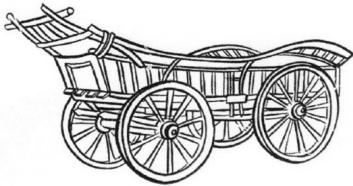


With thanks to Judy Dod for the museum poster design & for supplying the photograph from the Museum Archive Collection. Photo: Carnival on The Playing Close 1935

Charlbury Museum

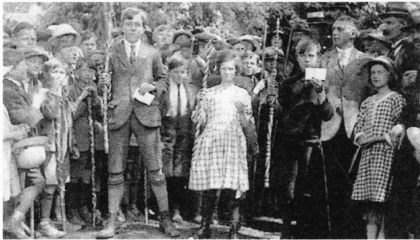
1949 – 2024

*Celebrating 75 years preserving
and sharing Charlbury's history*



*Explore how people here
worked, played, and coped
with the ups & downs of
life in past centuries*

This year's special exhibition **Tradition and Tragedy**



**Commemorating three children who drowned in
the Evenlode a hundred years ago**

**We are in Market Street, opposite the Deli. We open
Saturdays 10.30-12.30,
Sundays & Bank Holidays 2.30-4.30**

www.charlburymuseum.org.uk



Charlbury Street Fair

Our Quiz in March was a great success and if you didn't make it, you missed a real treat with delicious Paella from Amerelo and brain-teasing questions from Steve Jones and team.

The next event is the ever popular Open Gardens, which will be on the afternoon of Sunday 9th June. Put the date in your diary now and tell your friends.

We will provide a quiz as usual for the children so it will be a fun family afternoon out. The event would not be complete without tea and cakes in the Memorial Hall and, if you could help by baking something for us, please get in touch with me.

csfsecretary@charlburystreetfair.org or 07800 744787.

Plans are well underway for this year's Street Fair which will be on Saturday 21st September. It will feature all the usual activities including egg throwing on Friday night, stalls, music and food and we are planning some new things too this year. If you would like to have a stall for your charity or business, please get in touch quickly as there is only limited space!

*Liz Partington
Secretary.*

CHRONICLE ADVERTS

Advertise your business in the **Charlbury Chronicle** and reach over 1600 residences.

To place an advert please ring Graham Jowett on 01608 810666 or email: adverts.chronicle@outlook.com

Katrina Moss Inner Peace Reiki

Treatment in the comfort of your own home

Level 2 Reiki practitioner

Treatment and public liability insurance

Reiki complementary healing can be

beneficial in many ways

Gift vouchers available

Please contact me for a consultation

07824 357690

katrinamoss1979@icloud.com

PETER SMITH & SON

FUNERAL DIRECTORS LTD

Independent Funeral Directors with family values

•
Pre-paid funeral plans

•
Funeral Planner of the Year 2018 - Regional Winner

•
Funeral Planner of the Year 2020 - South Midlands Runner-up

•
All types of memorial work
including restoration and renovation

•
Personal 24 hour service

•
Directors: Peter Smith and Sean Smith

•
135 Burwell Drive, Witney OX28 5LP

•
01993 702000

www.petersmithandson.co.uk





Did you know that Charlbury is a “phronetic” community?

In 2022 a researcher at the University of Oxford’s Transport Studies Unit, Lea Ravensbergen, who was conducting a study on older adults’ travel needs, identified community transport (CT) as an important service for older adults and focussed her investigations on community transport organisations in Oxfordshire (voluntary car schemes and community minibuses).

This involved interviewing a number of representatives of local CT schemes, including All Together In Charlbury, as a local voluntary car scheme.

ATIC has been sent the written reports of this research and, having Googled our way through the language used in the initial academic sections, which as laypeople we were not used to, we found this to be a stimulating, perceptive and thoughtful piece of work, which shows the value of CT schemes like Charlbury’s.

The researcher quotes other studies which show the ways in which community transport provides more than transportation: providing a “third space” for building relationships, reducing isolation and helping people maintain autonomy.

She identifies the practice of community transport as grounded in “phronesis” (we had never heard of it!).

This is “*practical wisdom* which shows how to reasonably address and act on social problems in a particular context” or even more academically, “situated strategic, ethical wisdom” !

While similar to common sense, phronesis has an ethical element to it: phronesis focuses on “good” rather than “correct” action. As such, it involves knowing what is the appropriate, or best, thing to do in a given circumstance, in order to meet a need.

Lea’s research shows that community transport provides both a transport and social service with many different benefits.

The transport it delivers is unique in being made low-cost, flexible and functionally accessible. Further, it is a social scheme that has been made to meet passengers’ needs beyond transport, to provide mobility to those with few other options and to build community.

These unique aspects of community transport are made possible through dedicated volunteers informally and flexibly responding to needs through practical wisdom.

Surely this is true of all the wonderful community-designed and -run services and activities in the town from which local residents can benefit and for which Charlbury is well-known.

We are definitely a “phronetic” society, even though we may need a dictionary to realise it! Let’s hope that all Charlbury residents feel part of a supportive community and can access local services which meet their needs.

Meryl Smith

CHARLBURY REFUGEE ACTION GROUP

On 24th April, CRAG members and supporters welcomed Vicky Taylor, a PhD student at Balliol who, in a very informative though harrowing talk, told us how refugees from countries including Afghanistan, Sudan, South Sudan and Syria, coming to the UK by small boat because of the lack of safe, legal routes for asylum, are being arrested and sent to prison for 'illegal arrival'. Donations at the meeting raised £140 for the charity Safe Passage, which campaigns and provides legal help for family reunion for refugees.

Safe Passage is one of the six partner charities CRAG is currently supporting. The others are Refugee Community Kitchen, Care4Calais, Asylum Welcome, Collective Aid, and The Hope Project, all of whom are doing amazing work supporting asylum seekers across various parts of the world. Between October and April we've given out over £20,000 in grants to these charities. Since our inception we have raised over £140,000.

Our concerts are key fundraising events. The total income from the CRAG 23/24 winter Sunday tea concert programme was an amazing £11,000! Huge thanks to the wonderful artists who come to Charlbury to perform for us and raise these much-needed funds - and to all of you for attending the concerts! We were incredibly honoured to have the Mullova family performing here in Charlbury for a special gala concert in early May, and so generous of them to share their formidable talents with us. We are also enormously grateful for the generous financial support of many local businesses and individuals. Their sponsorship means that every penny spent on tickets could go directly to our partner charities.

We have more exciting fundraising events coming up. On Saturday 13th

July, CRAG will be putting on a European feast with an Eastern flavour at Chloe's! We will be serving a delicious meal, with a range of different dishes to enjoy. Further information and booking will be available on the charlbury.info and CRAG websites in due course, but save the date for an evening of fun and good food. In the meantime, if you have any questions or would like to go on the waiting list to book a place please email info@charlburyrefugee.org.uk.

We're also exploring the possibility of hosting a Yazidi choir sometime around the end of June. Please keep an eye on the events pages on charlbury.info or you can sign up to our newsletter by visiting our website at

<https://www.charlburyrefugee.org.uk/> for more details.

Averose Pharmacy

Your local community Pharmacy for you & your family

- ✔ NHS and private prescriptions
- ✔ Free delivery service to your door
- ✔ Text message service
- ✔ Travel vaccination service
- ✔ Blood pressure checks
- ✔ Flu vaccination service
- ✔ Weight loss service

PRIVATE WALK
IN SERVICE FOR
Back Pain, Acne,
Skin Care, Cystitis
and others

Visit our website www.averosepharmacy.co.uk

☎ **Call 01608 810315**

📍 Address: Averose Pharmacy,
Market Street, Charlbury, OX7 3PL

🕒 **OPENING HOURS:**
Mon. - Fri: 9am-6pm
Sat: 9am-1pm
Sun: Closed



DERWENT HOUSE

Home of British Craft and Makers

*Oxfordshire's exciting interiors store for British handcrafted Sofas & Armchairs,
Organic Mattresses & Beds, Furniture and Homewares*



Visit Derwent House, 3 Bridge Street, Witney, Oxfordshire, OX28 1BY T: 01993 212678
Free parking to the rear of the store

derwenthouseliving.co.uk

“A straightforward guide to dementia Understanding and managing symptoms and behaviours”

Published by Dementia Oxfordshire this is an informative and practical booklet, which has been co-produced by their Experts by Experience, a group of people living with dementia and their informal carers. It goes through the most common symptoms and behaviours associated with dementia. From repetitive questioning to loss of initiative, it explains some of the hidden meanings behind common behaviours, how to approach these and what can be done to minimise negative outcomes.

They have explained some common symptoms that people living with dementia may experience, offered an understanding of these symptoms, and how some of Dementia Oxfordshire's informal carer experts respond to these symptoms.

You can access and download a copy of the Straightforward Guide on the Dementia Oxfordshire website here:

<https://www.dementiaoxfordshire.org.uk/dementia-support/support-directory/a-straightforward-guide-to-dementia/>

If you have difficulty accessing the internet, you can ask Dementia Friendly Charlbury for a printed copy – email: charlburydf@gmail.com or phone 01608 810192.

Dementia Oxfordshire is here to support people living with dementia and their carer(s). People who have received a diagnosis will have a designated Dementia Adviser, who will carry out regular reviews and can be contacted whenever they or their carers need information, advice or support.

They have a support line, open from 9am to 5pm, Monday to Friday. 01865 410 210 The support line is staffed by Dementia Advisers who offer advice and guidance to everyone, including people

with dementia, their relatives, carers and healthcare professionals.

For further information and to see what dementia-friendly events are happening across the county visit their website: www.dementiaoxfordshire.org.uk

Assistive technology – to support you or those you care for in your everyday lives

There is an interesting article in the Spring 2024 edition of AgeUK Oxfordshire's EngAGE magazine about the different kinds of device which use assistive technology to help support people to live independently and safely at home. These include ways of Providing reminders of key tasks, Calling for help in an emergency, Knowing if someone is on the move, Making moving around at night safer, Help when out and about. It also suggests ways of getting further information about what is available.

Copies of the magazine can be found on the AgeUK Oxfordshire website here: <https://www.ageuk.org.uk/oxfordshire/about-us/engage-magazine/> Again, if you have difficulty accessing the internet, you can ask Dementia Friendly Charlbury for a printed copy – email: charlburydf@gmail.com or phone 01608 810192.

Dementia Friendly Charlbury (DFC) is a group of volunteers who want Charlbury to be a friendly and welcoming place for everyone to live, especially people with memory and thinking problems. If you have any comments or concerns to pass on to DFC or would like to receive information about living with dementia and support available, you can contact us on 01608 810192 or email us at charlburydf@gmail.com.

Meryl Smith



Charlbury Beer and Wine Circle

We are pleased to welcome Anne, Charles, Liz, Robin and Sarah who have all recently joined as members of the Circle.

Our spring programme started with member Ursula's presentation, when she offered us an interesting and affordable selection of wines from her native South Africa. Two white wines and four reds were on offer, starting with a Sauvignon Blanc.

Whilst Chardonnay is popular with many, it isn't to everyone's taste but we were offered an example from the Rustenberg winery that seemed to suit most members present. Tastes of apricot, coconut, orange peel and marzipan were just some of the flavours noticed in this creamy, zesty wine.

The white wines were followed by a Syrah, Cinsault, Pinotage and, perhaps the pick of the reds, a very acceptable blend of Syrah, Tinta Barocca and Cabernet Sauvignon from the W. O. Swartland winery. As an 'extra', Ursula treated us to some Biltong, an air-dried beef which proved to be an appropriate accompaniment to each of the red wines. Thank you Ursula for a really enjoyable and informative evening.

Peter Tompkins from Goedhuis Waddesdon Wines was our presenter in March, and for some of us our eyes were truly opened by the excellent wines – one or two of which were at prices not usually paid by many of those present.

Peter told us of the investment around the world in estates, vineyards and wine production by the various branches of the Rothschild family and, of the eight wines tasted, France was represented by four, with New Zealand, South Africa, Argentina and Chile each being the

source of one wine. An outstanding evening which has prompted arrangements for a tasting to be held at the Waddesdon Manor cellars in August.

Marcus Thornton, from Haynes Hanson & Clark in Stow-on-the-Wold visited us in April and presented seven wines, starting with a sparkling Vouvray Brut and three excellent whites in the first half – including yet another very nice Chardonnay from the Alto Adige region of northern Italy.

Four fabulous reds followed in the second half, all of which were well received by members.

It was agreed that Marcus gave us a very full and interesting presentation, demonstrating his exceptional knowledge of wine and its production.

At the time of writing we are looking forward to May's tasting, to be presented by Deborah and Chris who plan to offer us some of the wines they have enjoyed while living and holidaying around the world.

Then there is a walk around Oxford, visiting the Oxford University Press Museum and lunching in the Hall at Balliol College, to be followed later in the summer by a BBQ, garden party and the Waddesdon visit.

Our tastings are held in the Memorial Hall, usually on the third Monday of the month. Guests and new members will be made very welcome but we do ask that you tell us of your wish to attend.

Brian Murray, Secretary
sec.charlburybeerandwine@yahoo.com

Ant Horn, Chair
charlburybeerandwinecircle@gmail.com



Coffee break page

Compiled by Michele Marietta

1	2	3	4	5		6	7	8	9	10		11	12	13	14	15		16	17	18	19	20	
21						22						23						24					
25						26						27						28					
29					30				31		32				33		34						
35								36						37		38							
			39					40					41		42		43						
44	45	46					47					48				49				50	51	52	
53						54						55								56			
57					58						59			60				61		62			
63			64							65			66		67				68				
69						70		71						72		73							
					74		75		76							77		78					
79	80	81					82		83							84		85		86	87	88	
89							90		91						92		93						
94					95				96		97				98						99		
100				101		102					103			104						105			
106					107								108						109				
					110				111				112						113				
114	115	116					117		118		119						120				121	122	123
124								125		126						127							
128								129		130				131		132				133			
134								135					136						137				
138								139					140						141				

Answer on page 43

ACROSS

1. Short tails
6. Used a broom
11. Police weapon
16. Brightest star in Aries
21. Carpenter's machine
22. Electric dart shooter
23. Arctic ____
24. Chip away at
25. Less cordial
26. Natural bone cavity, sinus
27. Belgian city
28. Innermost membranes
29. ClO3_
31. Autumn drink
33. Hypothetical particle
35. Fee to moor in port
36. Bambi haunch
38. Harmony
39. Used to see the eardrum
41. Bon ____
43. 'Take On Me'
44. Assess
47. Correspond
48. Played by grinder & mon-key
53. Hideous
54. Stirs
55. Disappointing (slang)
56. O'Henry's *The Gift of the...*
57. Back muscle, familiarly
58. Patron saint of students, pharmacists, parachutists
59. Mass, US computer school
60. More than unpopular
62. Final: Abbr.
63. Broadcasting frequencies
65. The Falcon came from here
67. McQueen, Fendi, Chanel, LaCroix
69. Distort
70. Technical admission of guilt
73. Made with arborio
74. "Dig in!"
76. Toy rooms, plant stores
78. French vineyard
79. Oblique, virgule, stroke, solidus, shilling mark
83. Daring, audacious, brazen
85. Smell, scent
89. Ta
91. Tossed overboard for later recovery
92. Italian olive oil bread
94. Appropriate
95. Discharge
97. 'Are we there ____?'

98. 'All That Jazz' director
99. Biddy
100. Stickers
102. Theatre filled via free tickets
104. Jargons
105. 'Lulu' composer
106. 2004 song by Graham Coxon
108. Item with a ladder
109. Cliffside dwelling
110. All the rage
111. Drivel
112. Examine, dissect
114. Calms
118. Shpilkes, mensch, chutzpah, bubkes
120. Total letters received
124. Brand name
126. Eye, lemon, rain, mike
127. More than look up to
128. Like Bo-Peep's charges
129. Pie cuts, essentially
131. Pied of Hamelin
133. Standards
134. Unselfish sort
135. Critical
136. Spooky
137. 'Animal House' party wear
138. Clairvoyants
139. They had, or would
140. Current
141. Court figure

DOWN

1. Deft
2. Secret store
3. Handy
4. Biblical, historical, dogmatic, practical
5. Notched
6. Skilled, experienced female political leader
7. Decline
8. "C' ____ la vie!"
9. Seeing is believing
10. Neophyte
11. Seating sections
12. No colour at all
13. Ball prop
14. Put up, as a picture
15. Foreword, for short
16. Boot
17. How Dorothy travelled with her friends
18. ____ Carlo
19. 'Bye!'
20. Depends (on)
30. 'Give it ____!'
32. Criticise, slangily
34. Painkiller

36. 'And there you are!'
37. Civil War side
40. '... and Clover'
42. Simple chord
44. Labour camp
45. 'Encore!'
46. The 'U' in UHF
48. Cow's milk part
49. 'Come in!'
50. Scrawny
51. Lace tip
52. Rocket fuel ingredient, for short
54. Gun, as an engine
55. Type of security
58. Knight in shining armour
59. Killer
61. Strip
64. Extract
65. Fable finale
66. ____ flu
68. South Holland, cheese
71. Participates in Scouting
72. P.I., e.g.
75. Kind of ESP
77. Lower duet part
79. Runs through
80. To enjoy something easily
81. Cavern, in poetry
82. Poison plant
84. Irked
86. Additional
87. Plato thought these wandered
88. Cooktop
90. Clean, as a skill
93. Balaam's mount
96. Stops the falling climber
98. Sister to charity
101. 425 ml of beer
103. Quick, sudden
104. Posher than
105. Purple pickled
107. Falters, staggers
108. Scrap
109. Acceptances
112. *Much ____ About Nothing*
113. Carbonium, e.g.
114. Drudges
115. American for film
116. Pointed arch
117. Herring of the east North Atlantic
119. Preserved, in a way
121. Trash hauler
122. The true, eternal self
123. Bas-relief medium
125. A head
127. Style
130. Directly
132. Not post

As the end of our season of talks approaches, we have been encouraged by attendance at some of our talks, with the meetings held by Zoom just slightly more popular than those held in the Memorial Hall possibly due to the weather this year, with two exceptions, the talk by Tim Healey on Drivers' Roads with a packed audience, and Robin Lane-Fox's talk in April on New College Garden, brilliantly supported by friends from the Garden Society.

The talk on recycling in West Oxfordshire had to be held by Zoom and regrettably perhaps we could have had more questions and discussion, always slightly tricky on line.

So as we come up to our AGM, this year being held on the afternoon of Thursday 6th June, we are interested in your views on whether we have achieved the right balance with the Zoom meetings in the three winter months, and the others in the hall, bearing in mind that frequently the speakers request either in person or remotely.

It has been good to have a few suggestions from members regarding talks they have heard, or would like to, but we need more ideas from you! We have worked on an excellent programme for the 24/25 season, which will be publicised soon, in a leaflet and on our website as well as encouraging you to renew your membership and getting your friends and those new to the town to check the website for the programme.

Finally we really hope you will join us for tea and cake in the beautiful Corner House Garden from 3.30 onwards on Thursday 6th June followed by the AGM and a great opportunity to hear Rob Stepney's talk on the story of the Beating the Bounds tragedy almost exactly 100 years ago. Using eye-witness accounts, testimony at the inquest, and contemporary photographs, Rob will piece together the events of that fateful day. We also hope to have the first public showing of a short film made with Rob Jackson and Alan Snelling.

Nikki Rycroft
www.charlburysociety.org.uk



Charlbury WI news

We meet in the Memorial Hall at 7.30pm on the third Wednesday of each month.

We're not just Jam & Jerusalem; come & see what we get up to!

- Lifelong Friendship & Support
- All Ages & Abilities
- Education, Hands-on-Activities &
- Talks on Fascinating Subjects

- Community Involvement Interest Groups
- Outings, Walks & Meals Out
- Share Experiences & Have Fun

Come as a visitor to see what it's like. We look forward to welcoming you!

For more information, contact: Heather Hill on charlburywi@oxfordshirewi.co.uk



Looking for an alternative to a cattery?

We offer cat home visits for feeding, litter cleaning, play-time and cuddles.

We can look after your house too, pick up post and put out bins.

Other small pets also cared for.

Insured and Police checked.

Caring for your pets since 2011.

Call: 07917 391520

Web: paw-pals.co.uk/westoxon

Email: westoxon@paw-pals.co.uk

D S JONES

BUILDING, ROOFING & PROPERTY MAINTENANCE

All aspects of building, roofing and property maintenance undertaken
For all enquiries call or email

07496149990

dsjmaintenance@hotmail.com
Instagram: @dsjonesbuilding



Free Delivery

within 10 miles of Long Harborough

☎01993 880 500 ✉info@bowards.co.uk



- Tiling & Slating
- Flat & Felt Roof Systems
- Guttering & Fascias
- Chimney Works
- EPDM Rubber Roof Systems
- All Roof Repairs
- Moss Removal
- Aluminium Gutter Systems
- 35 Year Guarantee
*new roof installations
- Velux/Dormer Works

Fully Insured

All Major Credit Cards Accepted

01993 700 725 / 07789 556495

info@countryroofingltd.co.uk
www.countryroofingltd.co.uk





PROFESSIONAL ARBORICULTURE

ALL ASPECTS OF TREE SURGERY UNDERTAKEN

FULLY INSURED

FREE QUOTATIONS

(01993) 868001
office@jagtrees.co.uk
www.jagtrees.co.uk



Fitness 4 Seniors

FALLS PREVENTION BY LOUISE BARNES



Strength, Stability, Flexibility
Evidenced-based Falls Management Programme (FaME)
Build balance confidence and strength for your everyday activities

Charlbury Community Centre

Tuesdays 3.00pm (1hr)

Also on Mondays 10.00 am (1hr) – The AM Hall, Middle Barton

1st class £4 with this voucher

£6 per class. Book your place:

07879 685579 | louisebarnespt@gmail.com



Louise Barnes FCIMSPA, Senior Activity and Health Practitioner, Personal Trainer, The Chartered Institute for the Management of Sports and Physical Activity.

GET RID REMOVALS

Small local company specialising in:

- Full/part house moves: local & long distance
- All types of removals: local & long distance
- All types of clearance: house, office, garden, loft and shed
- Removal and recycling of any unwanted items: furniture, bric-a-brac, books, white goods.
- Removal of single items upwards
- Light Haulage



07538 244 861

hello@getridremovals.com

www.getridremovals.com



Corner House developments need support and your help

We are so fortunate in Charlbury for the generosity of Charles Morris, a Charlbury resident in the 1930s and 40s, who seeing the prominent house on the central crossroads decided to buy the house in order to donate it for the benefit of the town.

That is how we come to have the Corner House at the crossroads next to the Bull and across the road from the Rose & Crown.

The donation could not be fully implemented until after the war but during the war years part of the building was significantly rearranged to facilitate one of the British Restaurants that were set up in many towns to help people cope with the war.

The garden was eventually used to locate the large community hall – the Memorial Hall – built as a permanent reminder of Charlbury losses in the war.

These days, the Corner House and Memorial Hall is managed in the care of the trustees of a special charity.

These volunteers work to maintain and improve the buildings and manage use of the various spaces.

The whole thing depends very much on these Charlbury citizens meeting monthly to ensure the buildings continue to serve the town—and to try to improve them. We still hope it will be possible to make some alterations and improvements despite one or two objections that slow things down added to our need for more funds to finance the work.

We need encouragement and optimism and not unnecessary negative obstacles. You might be able to help by becoming one of the trustees.

At the moment, the work falls on a very small number of trustees whilst more brains and effort should help speed things up and move matters forward.

In particular, we will shortly need a new secretary but other trustees to join us will lighten the load and help progress for the benefit of the town.

If you are interested, please discuss this with one of the existing trustees or by emailing

simon.chmh@btinternet.com or
roy@royscott.uk

CORNER HOUSE AND MEMORIAL HALL

Office: 07826 056496
Office hours: Mon 9.30am - 11.30am; Wed & Sat: 9am to 12 noon
Emergency Contact:
Roy Scott (01608 810562)



The Community Workshop: come along and see for yourself!

What have a casserole lid, a piano stool, a sledgehammer, two director's chairs and two large decorative wooden lions have in common? Read on to find out!

It is just a year since TV's Suzie Fletcher came and performed the official opening at the Workshop – when we just had the shell of our building and not much more. A year in which we've gone from that stage to having two fully equipped work spaces and a membership list that has reached nearly 50 people. And we've got a kettle too.

A month or so ago Jaime Hewett from Oxfordshire Community and Voluntary Action (OCVA) – which has supported us with a grant through the Connected Communities Fund – came to see for herself what we have achieved. "The Charlbury Community Workshop is a friendly and welcoming space, with a clear mission to bring more members of the community together, fostering a sense of belonging and purpose," she wrote after her visit.

She was clearly impressed, not only by what we were able to show her, but by one of our main reasons for setting up the Workshop in the first place: to give people who may feel lonely or isolated a place where they will be welcome – to do hands-on things, to have a chat, or just brew up a mug of coffee.

That's what we've set out to achieve, and we are getting there – slowly. The Workshop is here for everyone to come in and use, and we know that we still need to reach out more effectively. It's a fun place to be, and a welcoming place, and we want more people to come and find that out for themselves.

And as for the casserole, the stool, the sledgehammer, the chairs and the lions? They're all things that people have brought in, and that we've repaired for them. Oh, and by the way, if anyone has a metric socket set they don't need, we haven't got one yet. Thanks!

Simon Walker

Come to relax, unwind, read the papers, catch up with friends and colleagues and enjoy some delicious home-made cake along with a steaming cup of Fair Trade tea or coffee

Font Cafe

St. Mary's Church, Charlbury
10am to 12 noon every Thursday

For smaller children we provide a play area with toys. Free Wi-Fi available



CHARLBURY RIVERSIDE FESTIVAL

The long running, free, local music festival Charlbury Riverside is returning to the Millfield on the 20th and 21st July.

Over the past 25 years Riverside has grown from a Jazz garden party to a 2 day celebration of all kinds of local talent. With 50 acts spread over 4 stages there is something for everyone. Some of the hottest new acts from the Oxford scene as well as lots of local Charlbury talent will be gracing the stages thanks to a purely volunteer crew of dedicated music fans.

This West Oxfordshire institution runs as a non-profit and has recently been granted CIC status whilst remaining free to enter and still winning numerous awards and recommendations.

It's all thanks to a dedicated management team, plus an invaluable team of volunteers who come out over the festival period to help out with construction, bar-staffing and stewarding and – importantly – clean up of our

beloved Mill Field. If you'd like to contribute to this unique event, no matter your skills or experience, check the website for more information.

Of course it wouldn't be possible without the bands who play every year, and they're volunteers too.

This year sees re-formed Oxford legends Beaker, ex-Supergrass stadium filler Mick Quinn's The DB band, festival headliners the August List, hottest new oxford acts Blue Bayou and Kockroches and a retelling of Macbeth from deep inside a 90s Manchester night club.....so check the website for LOTS more.

There are also many free family activities, plus crafts, greenfields and an amazing selection of independent food stalls with flavours from across the globe. For details

See www.riverside.charlbury.com

Fergus McVey



Charlbury Town Youth Football Club will be holding our annual youth football tournament at Nine Acres Recreation Ground on Sunday 9th June.

This is a much needed fund-raiser for the youth football club, and matches will be on between 9am and 6pm, so please pop down and support our youth teams.

If anyone wishes to sponsor the event, then please get in touch with Gareth Hollinshead.
gareth.h75@btinternet.com



Charlbury Beer Festival

A Celebration of Community and Charity

Charlbury Beer Festival:

Last year's Charlbury Beer Festival was a resounding success, raising an incredible £25,000 for fantastic causes!

These funds make a real difference in our community, supporting education, sports and wellbeing.

We are so grateful to everyone who makes this event possible. A huge thank you to all who attend, our tireless volunteers, and our generous sponsors – you're the heart of the festival!

The Beer Festival is a testament to Charlbury's fantastic spirit. We see it in the Scouts, the Guides, the Primary School CSA, the Pre-School, CRAG, and Laurence Nursing Home – each coming along and playing a special part.

Our local businesses are the backbone of the festival. At the time of writing we're already thrilled to have generous sponsorship commitments from Bronsens Chartered Certified Accountants, Sonnox, The Theatre Chipping Norton, Cornbury House Horse Trials, and Charlbury Garage.

A special thank you to Northender, Caswell Racking & Storage, Jim Holah, Down Stone Books, Noble Dynamic, and Alan Ralphs for sponsoring barrels of beer!

We have around 60 barrels of beer ready for sponsorship! If you'd like to

support the festival and put your name (or dedicate it to someone special) on a barrel, please register on our website: charlburybeerfestival.org/sponsors

Of course, there's more than just great beer! Expect delicious food, lively music, fascinating talks in the Culture Tent, and the excitement of Aunt Sally. Kevin's Community Circus, the Pre-School, and Little Wild Things will keep the kids entertained all day long.

Want to be part of the action? We need volunteers! Even an hour or two of your time makes a difference. Email:-

volunteering@charlburybeerfestival.org to get involved.

We can't wait to see you all there!

Roger Noble and Gill Begnor (Chairs)

www.charlburybeerfestival.org

Charlbury Beer Festival
Saturday 29th June
Charlbury Cricket Ground
from noon til 9pm



Charlbury Pre-School News

Here's a roundup of the exciting activities and events happening at Charlbury preschool this term:

Garden Adventures: Our little green thumbs have been busy in the garden, planting seeds and watching them grow with tender care. We're also thrilled to be participating in the Open Gardens this year! Please join us on 9th June.

Special Visit: The police will be visiting us on May 9th to talk to the children about their important role in our community. We are all very excited to learn more about their services and also sit in their police car!

New Play Equipment: Our outdoor play area just got an upgrade with new climbing equipment, a steering wheel frame, and guttering shoots. A much needed update that will benefit the children of preschool for years to come.

We've also had some upgrades in the classroom; a new role play area and an abundance of wooden toys have been a hit with all the children, sparking imaginative play and storytelling adventures.

Creative Sensory Play: Noodles, porridge oats, rice, lentils, pasta - you name it, we've explored it! A favourite amongst the children has been water play. Mixing colours, creating textures, and concocting magical potions.

This term in Monster Phonics we are learning about rhyming and crafting rhyming spells to put into Tricky Witch's Cauldron.

Ofsted Outcome: We're thrilled to announce that we have been rated Good

by Ofsted in March 2024. This is a testament to the hard work and dedication of our staff and the wonderful volunteer lead committee.

Latest Vacancies: We currently have openings for dedicated and passionate individuals to join our team.

If you or someone you know is interested in a rewarding career in early childhood education, please contact us for more information.

As of September 2024, we are happy to announce that we will be further extending our daily opening hours from 8:30am-5pm, due to popular demand from parents.

Also a reminder that our preschool is for children age 2-5 so if you're looking for a nurturing child-led setting please pop along for a visit.

How to get in touch

To find out more about our Pre-school or to talk to a member of the team, you can reach us through the following channels:

- www.charlburypreschool.org.uk
- admin@charlburypreschool.org.uk
- 01608 811200

We look forward to seeing many of you in the setting and at our next community events. Please say a friendly hello to our volunteers at the upcoming events including; open gardens, beer festival and Riverside!

Jessie Cope



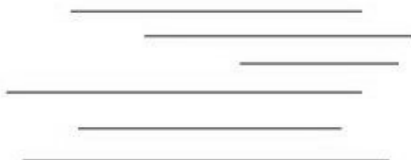
Charlbury Amateur Dramatic
Society
Presents

The Real Inspector Hound

By Tom Stoppard

Directed by Sue Haffenden

A Thrilling Mystery



Friday 24th May 2024 20:00

Saturday 25th May 2024
Matinee 2.30pm and 8pm

Chadlington Memorial Hall

Tickets: £ 10.00
Box Office: 07776 426993

By permission of Concorde Theatricals



Probuc Club of Charlbury – All Welcome

The Probuc Club of Charlbury has moved on from its AGM and has now planned an exciting programme of lunches for the year and beyond:

May 1st Education and Opportunity – Patrick Derham, former headteacher of Westminster School

June 5th Lawrence Home Nursing Team – Verity Fifer

July 3rd BBQ at Charlbury Bowls Club – a popular annual event and an opportunity for a taster Bowls session

August 7th Lowland Rescue Oxfordshire – David Woolgate, Trustee and past chair

September 4th Ladies of Blenheim-Lust and Laudanum – Antonia Keaney, Social Historian at Blenheim Palace

We meet for lunch and events on the first Wednesday of every month at 12 noon, if interested please contact our Chairman (Mike White) or our Secretary (Simon Handley) for further information.

The new season kicked off with what was our final lunch, for the time being at least, at Witney Lakes. It was a relaxed and intimate get together which produced one of our best lunches for some time, a fitting farewell to our long-time home.

The presentation by retired Air Commodore Phil Wilkinson gave us a very enthusiastic and knowledgeable history of the Commonwealth War Graves Commission. The talk concentrated on the way the Commission was founded and developed by the energy and persistence of one man – too old to fight in the First World War: Fabian Ware.

Ware went to France within a few days of the outbreak of hostilities in August 1914, initially as head of a British Red Cross Mission, but within a very short time he had laid the foundation of the work, the style, the ethics and most importantly the reverence of today's

Commission.

Phil summarised the phases of the work that brought together engineers, horticulturalists, artists and designers. Principal architects included Sir Edwin Lutyens, Sir Herbert Baker and Sir Reginald Blomfield; cultural guidance was in the hands of British Museum Director Sir Frederic Kenyon and the noted author Rudyard Kipling, who had lost his son in the War. Noted garden designer Gertrude Jekyll was heavily involved in garden and grounds design and the director of Kew Gardens advised on planting.

The results are easy to see on any visit, for example to France. Here there are nearly 3,000 cemeteries and memorials – this out of a total of over 25,000 worldwide. 475,000 British men and women are buried and commemorated in France, with 440,000 of those lost in the First War. All together there are one and three quarter million Commonwealth dead in the hands of the Commission's working teams.

A series of Phil's images of cemeteries and memorials covered sites from as far North as the Faroes and as far South as Singapore, with other sites all across Europe and Asia, from Charlbury to Vladivostok.

Future talks include:

Designing for Resilience against Climate Change – Prof. John Dora

Battle of Britain: VE Day and Beyond – Chris Leworthy, senior guide of the Battle of Britain Bunker at Uxbridge

Oxford Biomedical Research Centre: Astra-Zeneca Covid-19 vaccine and other biomedical research.

Contacts for Probuc can be found at the end of the Chronicle in the Community Directory.



News from the Charlbury Patient Participation Group.

In the winter edition of the Chronicle we gave a summary of the Steering Group's role and how it interacts with the Charlbury Medical Centre (CMC). We also listed the current staff at the CMC. Since then we have welcomed back Dr. Gilligan from maternity leave. Information about staff and other CMC matters is available on the CMC website which is now updated regularly.

At the Farmer's Market in March members of the steering group braved the wind at a stall and we were pleased that many joined the CPPG virtual group at this event and that there was so much interest. Comments were fed back to CMC managers.

Waiting Times : Waiting times for a non-urgent doctors' appointment are now much reduced. We are grateful to CMC for having responded to our requests for a flexible appointment system to be instituted. There are now 3 categories of appointments: 1. Urgent same -day appointment. 2. Not so urgent but shouldn't wait for weeks and will be seen in 3-4 days. 3. Appointments which can be safely left for 2-3 weeks. Ben Haydon-Johnson (advanced paramedic) assesses all urgent calls for referral to GP or other clinician, and the duty GP triages calls when Ben is absent. Unlike many other surgeries reception staff at CMC are not designated 'Care Navigators' and do not make clinical decisions regarding appointments.

Research Projects: There has been some confusion among CMC users about invitations which have been circulated to take part in research projects. These have been genuine research projects and not scams. If you receive a request to take part in a trial and do not wish to take part delete the message, or do not respond to the paper invitation but

please do not ring the CMC as these calls take up valuable reception time. If you are concerned contact the CPPG, (see link below), and we will make enquiries with Ben who is the research lead at CMC.

Men's Group: Statistics show that men are less likely than women to seek help from their GP and have a higher risk of dying earlier than women. <https://www.menandboyscoalition.org.uk/statistics/>. One of the members of the steering group of the CPPG (Alan Jenkins) is interested in setting up a Men's Group to explore this and other issues which may be of particular interest to male patients. If you are interested in sharing your ideas he can be contacted via the patient group, e-mail details are at the end of this article.

Test Results: There is concern among many patients that they are not always given their test results. The duty GP or the paramedic check and code between 50 and 200 test results a day and it would be impossible to send all these results out to patients. If results are normal you will not be contacted. However, if you register with Patient Access or download the NHS app you can view your results. In most cases it is clear whether the results are within normal range. The initials NA next to the results mean 'No Action', ie nothing seen that requires intervention. If you are concerned you can ring the practice to check results but after 10:30 a.m. when the lines are quieter.

Phone Message: The length and content of the telephone message at the CMC is the cause of many comments from patients. The medical centre tells us that they are obliged to say when, due to unforeseen circumstances, there is only one GP on duty and the number of



appointments is limited. CMC has told us that their telephone message is one of the shortest compared to other local practices. It is important that people stay on the line if they need to see a GP urgently.

Vaccination Clinic: A COVID vaccination clinic was held at CMC on April at which 489 patients who were over 75 and/or vulnerable were vaccinated , a further 38 were subsequently vaccinated at home. We are fortunate that CMC organises local vaccination which means that elderly and frail patients do not have to travel far for their vaccines. CPPG acknowledges that two volunteers are needed to manage the flow of people and cars at such clinics and will try to ensure that in future there is no parking for events at the Community Centre at the same time. Our thanks to The Football Club for lending the room.

Outsourcing: Some conditions are now outsourced for management to private companies. Connect Health: for musculoskeletal disease or injuries, Spa Medica: for eye surgery (cataracts). Feedback both positive and negative should be made directly to the company

concerned. However, the CPPG would also be interested to hear your comments

Returning Medical Equipment or Disability Aids. A collection was organised in March for these items via the Red Cross but in the end all items were collected by Charlbury residents. Since then we have learnt that the Red Cross will no longer collect this equipment. Maybe the first port of call should be the Charlbury forum for anyone wanting to dispose of such equipment, or if that does not work then try Skiggle <https://www.skiggle.co.uk/> , which is a charity specialising in redistribution of medical equipment.

If you have any queries or would like to join the CPPG please e-mail charlburypatientgroup@gmail.com .

There is no commitment on your part, and you will be sent e-mails regarding updates and news from the CMC and minutes of the CPPG meetings. Information can also be found on the CPPG webpage on the Charlbury Forum, (Community, Health & Well- Being).

Deborah Hofman

**Enjoyable and Friendly
Art Sessions in
Stonesfield**

**Drawing & painting in small
groups**

**For more information contact
Gabriele:
gabrielekern31@gmail.com**



**All Together In Charlbury –
a local helping hand**

If you need:

- Transport to appointments or activities/ visits
- Occasional household tasks/gardening
- Shopping
- Help with a form or letter or something else
- Someone to pop in for a chat

**Local ATIC volunteers are here to help
Call 01993 776277**



Charlbury Arts



**CHARLBURY FESTIVAL
AUGUST BANK HOLIDAY WEEKEND
PLEASE NOTE THE DATES**

**FRIDAY Folk Music
SATURDAY Cabaret Evening
SUNDAY Poetry & Music
MONDAY The Four Wordsmen of the Apostrophe & Mingus Tree**

Today there's a cold April nip in the air and I am thinking of hot summer days full of fun and festivity!

Charlbury Arts is excited about ideas for our Summer Festival which will pack the bank holiday weekend, August 23rd to 26th with music, poetry, exhibitions, sculpture and exciting activities for all ages and abilities. Great family fun, food and evening entertainment! The programme is in preparation and here's a taste of the delights to come...

The theme of the Summer Festival is 'A Sense of Place, a Sense of Space', celebrating our lovely town of Charlbury surrounded by the Area of Outstanding Natural Beauty. Our exhibition of two- and three-dimensional art aims to capture the essence of this with work both inside and outdoors. Submission of works is open to all members of Charlbury Arts, join us and enter your Sense of Place, Sense of Space artwork!

Over the Summer Festival weekend, find your inner artist at one of the workshops

which will take place every day, open to all ages and abilities. Visit our community art space, the ArtRoom and have a go at a new art skill or use your talents to create a masterpiece. For outdoor entertainment there will art activities never seen before in Charlbury, aided by the Charlbury Community Workshop, look out your art-splattered clothing!

Travel in time at Charlbury Museum, explore our past through amazing maps or join a guided walk for immersion in our present. Experience 'Travels with my Art' with a local expert!

Varied eatery establishments in Charlbury are joining in the Summer Festival and we will be sustained by their local delights.

On Friday we will be exhilarated and gently relaxed with an evening of Folk Music from Jarisel, our local and much-loved musicians. Just right to start a bank holiday weekend in Charlbury.



The highlight of Saturday evening will be the Festival Cabaret with music, magic and entertainment. Festive refreshments will be available at the event, perfect to make an enjoyable evening with friends.

Sunday evening will be an evening of Poetry and Music at The Old Farmhouse on The Playing Close with Lionel Sainsbury as pianist, a real treat in store.

The fun continues into Monday when in the evening The Four Wordsmen of the Apostrophe will arrive, accompanied by Mingus Tree to finalise a great weekend.

During the summer leading up to the festival, to help with funding, Charlbury Arts will be repeating its immensely popular 'Secret Exhibition'. Artworks donated by local artists will be exhibited anonymously and then sold for a fixed price. Look out for the exhibition and details of the sale where you can bag a masterpiece!

Add the Summer Festival to your diary now and watch out for further details of all the events and how to book your tickets. There will be programmes distributed to all homes in Charlbury, posters on noticeboards, details on charlbury.info and see our Instagram page at 'charlburyarts'. If you would like to be involved in the planning or help during the Summer Festival, you will be very welcome, please contact us at charlburyarts@gmail.com

*Joanna Shakir for Charlbury Arts.
charlburyarts@gmail.com*



- Scarification
- Hollow Tining
- Lawn Aeration
- Over Seeding
- Top-Dressing
- Removal Weeds
- Moss Control

NO CONTRACT

Contact Steve

01865 331501/
07894 983801

Email:
cotswolds@greensleeves-uk.com

Charlbury Church Services



Charlbury Baptist Church, Dyer's Hill

Contact: Secretary (01608 810107)

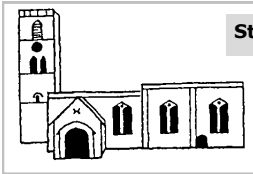
Sundays 10.30am. Weekly worship with Communion usually on the first Sunday of each month

Tuesdays at 7.30pm Join us in person or on zoom for midweek study/discussion

Our garden. A place to sit quietly and enjoy at any time.

June 9th. Open Gardens. Include us on your tour.

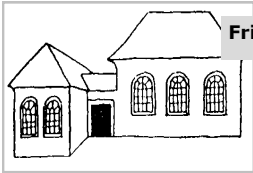
Live-streamed services: see our church website on **charlbury.info**



St Mary's C of E Church, Church Street

St Mary's Church, Charlbury and All Saints Shorthampton

Full details of all church services are available in the Leaflet or in the Church porch
Parish Office (01608 810230)
www.stmaryscharlbury.co.uk



Friends' Meeting House, Market Street

Meeting for Worship at the Friends Meeting House

Sunday mornings 10.30am

For further details contact Sue Terry (01608 811033)
email: sueeterry@btinternet.com

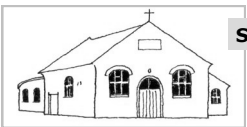
You are very welcome to join us



Methodist Chapel, Fishers Lane

Sunday services at 10.30am

Further information from Gill Grason (01608 810154)



St Teresa's R.C. Church, Fishers Lane

Wednesday Mass: 9.15 am (followed by Adoration/ Benediction) except in Lent when Stations of the Cross)

Friday Mass: 9.15 am

Sunday: 9.15 am Parish Mass.

Priest. Fr Clive Dytor, The Old Drapery, Church Street, Charlbury. Tel: 07484 158642.

Churches Together in Charlbury

The church year can be divided into special seasons – Advent, Christmas, Lent, Easter – with the weeks in between known as Ordinary time. This may sound as if there are long stretches of the year when nothing happens. In fact the word 'ordinary' comes from the numbers (ordinals) by which the Sundays between the major festivals are designated. The time is meant to be far from boring. Church members are encouraged to look outwards, to focus on the world around us and learn how to live in a way that cares for people and our environment and offers hope rather than apathy or despair.

If we investigate we may find that what we think of as ordinary and familiar can be full of surprises. In Lent this year Churches Together organised a series of talks by 'ordinary' people; local people who have committed themselves to doing unusual things for the benefit of other people and the environment. We heard about living alongside Palestinians in the West Bank to discourage ill-treatment by security forces or Israeli settlers; about staying in a remote area of Bangladesh to help build a village school; about taking part in non-violent protest to focus attention on the climate crisis and the urgent need for action; about making opportunities for nature restoration here in our own locality. Finding out what some of our neighbours are doing to help and protect other people and our planet was revelatory.

This year all the months from June to November fall in Ordinary time but that doesn't mean they have to be dull and uneventful. In the past they would have been broken up by saints' days – holy days, i.e. holidays. St Giles Fair, Witney Feast, Chipping Norton Mop Fair were all started to celebrate the patronal festival of the local parish church. Although saints days are no longer recognised community events, we can still be inspired by the stories of people who have been declared saints. They were

often very ordinary people who, through faith and love and sometimes through force of circumstances, ended up doing extraordinary things.

The Charlbury churches will keep busy in Ordinary time. During the first week in August the children's Holiday Club will take place in St Mary's. The theme this year is Olympic Games. In September churches will be holding harvest festival services and Churches Together will run a home-grown and home-made stall at the Street Fair in support of the Corner House and Memorial Hall. Cornerstone will be open as usual six mornings a week and Font café will welcome visitors to St Mary's on Thursdays. There will be services of remembrance in November and plans will be made for Advent and Christmas. We recognise that what the churches can do is just a small part of what goes on in Charlbury and we try to support other local organisations which help make this a good place to live. Cooperating, respecting, and caring for one another is what makes our town, or any other place, far from 'ordinary'.

*Rosalind Scott
Secretary to Churches Together in
Charlbury*

CHARLBURY FARMERS' MARKET on the Playing Close between 9am and 1pm on Saturday, 8th June

Charlbury Farmers' Market is administered by Thames Valley Farmers' Market Co-operative Ltd. and organised by Geoff & Janet Burroughs.

Any queries, please contact Geoff or Janet on the contact details below.

Email: burroughs871@btinternet.com
tel: 07969 208518, 01608 810260



Happy 150th Birthday Charlbury Cricket Club

As we fast approach the summer, preparations are well underway for what we're hoping is going to be a momentous year, as we reach our 150th birthday!!

ago; we are sure, are very proud!! We will ask our president, as he was probably one of the founders!!

Water, water everywhere

The winter period has been slightly challenging with water everywhere both in and out of the pavilion. Whilst not as catastrophic as the floods in 2007, we experienced a burst water pipe in the roof ceiling that has caused the best part of £15,000 worth of damage.

The club have been working very hard to repair the collapsed ceiling and all that it brought in its wrath, and a huge thanks goes to Steve Moss, for overseeing and delivering the project on time and on budget.

Projects

Whilst this was a project we didn't envisage, we have also been busy with other projects which include a major pitch extension, now seeded, and harrowed (on the main pitch) and hopefully will be in use by the end of the season. We plan to work with other community groups and the primary school to help install a new hedge on the far eastern boundary.

We are also proposing to install a new non turf wicket as our existing non turf track is well past its sell by date. Additionally, we are investigating the installation of Solar panelling, erecting a stretch tent in our beer garden and the replacement of the old pavilion roof; all of which take time, effort, and money.

Our 150th birthday party – Monday 26th August 2024

Cricket has now started and there are likely to be over 100 fixtures played on

Promotion

We started 2024 with both the second and third teams being promoted to Divisions 5 & 7 respectively; and with the first team remaining very comfortably in Division 3. This is arguably the highest league standard the club has ever played at during its 150-year existence and of course this is always supported with the superb performance of our Ladies team that continue to play in the Home Counties Premier Division.

Sponsors

We are also delighted to announce new sponsors for the next three years: -

- Main Club Sponsor - The Bull, Charlbury
- Ladies sponsor – House and Carriage
- Youth Sponsor – Original Marquees
- Ball Sponsor – Andy Glass Windows

Their generosity and support underpin everything we try and do! Thank you!!

Members

We now have over 180 members from the ages of 9 upwards and have a further 80 junior members signed up within the ECB All Stars and Dynamos programmes. Cricket is for all, and we have opportunities for players of whatever ability, age or standing. If you have an inclination to play, just email pj@charlburycricket.com. Those individuals that had the vision 150 years



Happy 150th Birthday Charlbury Cricket Club

the ground during this summer (weather permitting).

One of the most iconic fixtures is scheduled for Monday the 26th of August, where the Marylebone Cricket Club (MCC), will be coming to Charlbury to play in a ceremonial 150th anniversary match.

It is a day that we wish for the whole community to be involved within and we will be supplying lunch and tea for anybody that visits the ground, as well as organising entertainment for all ages. The bar will open all day!!

We are scheduled to have a visit from the Hook Norton shire-horses (and possibly Giles), and we will be arranging activities for juniors, firing up the president to lead traditional Morris dancing and latterly relax to an Oxfordshire jazz band; all designed to create, what we hope, will be a unique and memorable experience for all.

Keep a lookout on the forum on how to obtain tickets for the lunch and tea venues. The sun is guaranteed!

Open House

The focus will always be on supplying cricket to the Charlbury community. It's your community and your club; so please remember that the facilities are open to everyone every Friday and Saturday night or any time there is a game, throughout the summer.

You do not need to be a member, although you can sign up as a social member and receive 10% off all drinks.

Other events for your diary

Other events in the diary for 2024

include.

- 14th June -14th July - Enjoy the Euros on our large outdoor and indoor TV screen. Again, all welcome to come and create an amazing atmosphere.
- 29th June – Proud to host the Charlbury Beer festival.
- 22-26th July – Community Cricket Week – come and watch the Fire Brigade, The Bull, Football and Sports Club, Vicars XI, The Bell, The Rose and Crown and the Beer Festival committee battle it out in Charlbury's equivalent to the IPL. There is also room for one more team!!
- 5th October – Oktoberfest. Charlbury's liveliest night! Early bird tickets will be released in June!!
- 2nd November - Annual firework display

Its going to be a busy season. Please be part of it!!

Paul Jenkins Director of Cricket

pj@charlburycricket.com (07786 274234)

CHRONICLE ADVERTS

Advertise your business in the **Charlbury Chronicle** and reach over 1600 residences.

To place an advert please ring
Graham Jowett on 01608 810666
or email:
adverts.chronicle@outlook.com



Charlbury Town Council News

Contact: Lisa Wilkinson, Town Clerk at
charlburytownclerk@gmail.com or 07311 259412.
c/o Corner House, Market Street, Charlbury, OX7 3PN.
www.charlbury-tc.gov.uk

Changes at the Town Council

The 12 councillors elected in May 2021 have served their terms in office. Seven people were nominated for the 2024–2028 term. Four were already councillors: Gary Harrison (chair), Liz Reason (vice-chair), Frances Mortimer and Peter Kenrick. They are joined by three new councillors: Tom Greenwood, Carl Perkins and Tony Veters. The Council will co-opt five new councillors in the next few months. Co-option is when an eligible member of the public is voted onto the council by serving members.

The priorities of the new council will be announced in the autumn edition of the Chronicle.

Outgoing members

Seven councillors who served from 2021 until 2024 did not stand again this time.

Nick Potter started his career as a Town Councillor 32 years ago and it would be remiss not to acknowledge in particular his extraordinary service. (Bear in mind that Town Councillors are all unpaid – unlike District and County Councillors.) Nick Potter chaired the council for 20 of those 32 years, a tenure which oversaw huge changes in the town, including the construction of three phases of high-quality affordable social housing built in the town to meet the requirements of local people. The Town Council and its chairman (we started to use the term ‘chair’ in 2021) played a key role in facilitating these developments. The Town Appraisal was published in 1996 and Nick led the council in working towards the implementation of many of its recommendations including the introduction of the (sadly defunct) railbus service. The 750th anniversary of the

Town Charter was celebrated in 2006 and Nick arranged for the Princess Royal to visit the town and unveil a plaque outside the museum. The anniversary was also celebrated with the production and sale of a commemorative beer! Nick contributed actively to the work of the council up until his very last meeting.

Tony Merry served for 12 years as a councillor. Tony worked with Walkers are Welcome to establish the circular walk from Hundley Way, along a permissive path through Banbury Hill Farm, and through Wigwell Nature Reserve to the cemetery. He was a key member of the Charlbury Neighbourhood Plan Steering Committee: preparing and creating the plan took Tony and others six years and included extensive consultation with local residents and other stakeholders. He was also involved in Mill Field maintenance.

Janet Burroughs joined the Town Council in 2016, and stood for a second term in 2021. She also helped develop the Neighbourhood Plan and was on the working group set up to oversee the building of the Football and Sports Club. Janet has represented the Council on Nine Acres Management Committee for 8 years.

Gareth Epps was a Charlbury Town Councillor around 20 years ago, and has just served a further three years (2021–24). He was vice-chair for two years and he led public meetings about The Bell and parking. He moved forward road safety measures such as the 20mph zones, liaised with Wilderness, and challenged GWR over their neglect of the station.





Charlbury Town Council News

Claire Wilding was on the council 2021–24. Claire was responsible for the regeneration of Charlbury skate park, led working parties litter picking around Ticknell recreation area and removed graffiti from around the town. With James Styring, Claire organised a group of volunteers who taught English to recently arrived Ukrainians in Charlbury for a period of about two years. At its height, the programme had around 15 teachers and 20 students.

James Styring also served as a councillor 2021–24. James and members of the council's Journeys team have secured improvements for walking and cycling, working for years with the County Council to develop a 'Local Cycling and Walking Infrastructure Plan' for the town. The LCWIP is in its final stages of scrutiny at the County Council and will shortly be shared with the town's residents for approval. Examples of the kind of infrastructure we're talking about include the zebra crossing on the Slade and the traffic-calming build out on the Enstone Road. For the past few years, James has organised the annual Charlbury Children's Bike Rally around the town and through Ditchley Estate. James has left the council but will continue as a lay member of the Journeys team – look out for ads for this year's bike rally on 14th September 2024.

David Green was co-opted onto the council only a year ago, but in that short time he has had a massive impact. He's one of the driving forces behind the council's attempts to get a shared car club up and running in the town: this Citroën C1 is available for short rentals from Hixet Wood via the Hiyacar system.

David single-handedly spent huge amounts of time completely redeveloping the council website. He also spends several hours every weekend picking litter around the town centre.



What has the Town Council achieved?

The Town Council's 'vision', announced in 2021, is for Charlbury and the surrounding area to become a zero carbon community that is thriving, inclusive, beautiful, biodiverse and sustainable now and in the future. Its strategy focuses on community, biodiversity and climate change and the council's work has always been aligned with that. We are responsible for improvements to the play parks, overseeing the cemetery and allotments, and managing grass areas for wildflowers and insects. The council has also helped a lot of groups and projects post-Covid through our Community grants scheme.

The Town Council, over and above its statutory duties, has done a lot of work around traffic calming and the promotion of greener modes of travel via its



Charlbury Town Council News

Journeys team, mentioned above, as well as beginning to make real changes to our local habitats via the Land and Nature team (see below). We also now run Charlbury Market and our Buildings team (for more info on both, see below) has set up an amazing project called Home Comforts. An infographic on our website at <https://charlbury-tc.gov.uk/> shows exactly what areas the Town Council, West Oxfordshire District Council, and Oxfordshire County Council are responsible for.

Members of the public who are interested in any of the Town Councils' activities are welcome to contact the clerk, Lisa Wilkinson, to find out more. The clerk's contact details are above and if you would like to discuss something face-to-face, Lisa is in the Community Centre every Wednesday morning between 9.30 and 11.30.

Charlbury Market

Lookout for the return of Charlbury Market this spring, the local food market held on Saturday mornings outside Charlbury Community Centre. The market restarts on Saturday 1st June, between 9.30 am and 12 noon, selling fresh local produce from small

businesses. We have some familiar faces and some exciting new ones. Hope to see you there!

Home Comforts – Energy efficiency and comfort in Charlbury's homes

The Town Council's Buildings team has identified the ten most typical house-types in Charlbury and has commissioned a report which tells residents, according to their house type, how you can make your home more energy efficient, cheaper to run and more comfortable to be in. The 'Home Comforts' report tells you:

- The measures you can take and how much they cost.
- How much disruption they might cause.
- How much they will save on your energy bills.
- How much carbon you will save.

The measures range from cheaper easy wins to comprehensive whole-house projects. **Find your house type and more information** at <https://charlbury-tc.gov.uk/buildings-team/>. If you don't have internet access, please contact the clerk, Lisa Wilkinson, on 07311 259412.





Charlbury Town Council News

Land and Nature team

The UK is one of the world's most nature-depleted countries and urgent action is needed locally as well as nationally. With this in mind, the Land and Nature team is putting together a framework for nature recovery across the three parishes of Charlbury, Fawler and Finstock and we want YOU to be involved and to share your ideas with us.

To get the public engagement process going we are holding a Nature Day event, free and open to all ages, at Wigwell Nature Reserve in Charlbury on Saturday 15th June, in partnership with the Wychwood Forest Trust who manage the reserve.

Come along to find out more, tell us what you think and have a go too! Learn about things YOU can do including citizen science monitoring of species or water quality, volunteering on nature reserves or making your own garden more wildlife-friendly.

Mill Field news

One of the most important places owned by the Town Council is the Mill Field. We have been working hard not only to maintain this facility but also to improve it for the town and for nature.

We have placed 12 nest boxes, maintained trees, begun to restore an area of flood meadow and opened up sections of the riverbank to let light back in and to encourage improved river health.



A recent fish survey by the Environment Agency revealed a healthy stock of a variety of fish species, so it is now more important than ever that we strive to improve the river.

To that end, we are currently in the design phase of replacing our crumbling weir with a new 'rock ramp' fish pass. This will maintain river levels and, importantly, allow fish to pass over the weir up and downstream.

Work with us

Many members of the public are already working with the council in the areas described above. So if YOU fancy getting involved with the Journeys team, the Buildings team, the Land and Nature team, or Charlbury Market, please just contact the clerk, Lisa Wilkinson.

Cllr James Styring

CHARLBURY MEALS ON WHEELS

Meals on Wheels prepares and delivers meals at lunchtime on Tuesdays to elderly and disabled people in Charlbury and Stonesfield. Meals now cost £4 delivered.

We are now accepting new recipients. Please ring Susan Merry on 07979 840438 or email susanmerry2@gmail.com.

We also urgently need an additional cook to join the team on a monthly rota. If you are able to help please contact Susan in the first place.

From County & District Councillor Liz Leffman

01608 810153, 07741 073088 liz.leffman@oxfordshire.gov.uk

Thank you to everyone who supported me in the recent election for the District Council. It has been my great privilege to represent the residents of Charlbury for 12 years.

The town and its very special community mean so much to me, and I look forward to continuing to serve you all in whatever way I can.

I am pleased that as your County Councillor I can confirm that in the late summer the road at Fiveways leading to the Cornbury North Lodge will be resurfaced! I have spent the past four years trying to get this road onto the repair schedule as it has got steadily worse.

Unfortunately, the budget for road repairs is far lower than we need – we get about a third of what we need from central Government each year – but we decided in the recent budget to allocate an additional £7 million to resurface the worst 100 roads across the county.

So you should start to see some improvements, not just at Fiveways, but elsewhere as well.

We have also been experimenting with ways of filling potholes more sustainably, and with techniques for road resurfacing that provide a more

permanent surface. The new materials we are using include recycled plastic, and the surface was trialled in Curbridge, the first time this has been done in the UK.

As I mentioned in a previous Chronicle, OCC recently had a poor Ofsted report for its provision of services to children with special educational needs and disabilities.

Since then our performance has improved and we are now processing applications at a higher rate than the national average.

We also received a Good rating recently from Ofsted for the services that we provide to children in our care.

In March, together with other members of the North Cotswold Line Task Force, I met the Rail Minister, Huw Merriman.

We told him how important the line is to the local economy, and how important it is to get the line doubled so that trains can run more frequently and on time.

I have also recently had a meeting with Network Rail, GWR and the Department for Transport on the same subject, and the Rail Minister has invited us back for another meeting in June, to discuss an outline business case.

St Mary's Holiday Club

Churches Together in Charlbury Holiday Club - The Charlbury Paris Olympics Tuesday 30th July – Friday 2nd August. 10am – 12.30pm. St Mary's Church Charlbury.

For 4 – 11 year old children (Reception – year 6).
£25 for the four days – siblings £20 (reduced fees available if required).
Optional afternoon sports sessions available.
For information and the booking forms please email:
parishoffice@charlburychurch.uk

Charlbury Exhibition Foundation

The Charlbury Exhibition Foundation (CEF) is a local educational charity (Registered Charity 309236). Its origins date back to bequests made by local people, Ann Walker in 1667 and Richard Eyans in 1666, but its present scheme was established in 1988. Its charitable purpose is to promote the education of young residents (up to the age of 25) of Charlbury. The majority of its income is earned from renting out its property, the Grade II listed Old Grammar School in Park Street, built in 1837.

Since 1975 the Old Grammar School building has been rented to another local charity, the Charlbury Pre-School. In recent years the rent received has been used by CEF to fund grants to local young people who are in further or higher education at college or university or who are on apprenticeships.

The relationship that CEF has with the Pre-School is enduring and close. The two local charities have complementary objectives since the Pre-School is an education-focused early-years setting in Charlbury whose work with young children has been acknowledged and valued by the local primary school.

In 2021 the Pre-School decided to make a major extension to its services which involved substantial costs in the short term. The CEF worked to support the Pre-School in this project in order to ensure that the Pre-School continued to provide its valuable service to the young children of Charlbury. That led to a short-term impact on the income received by CEF.

At the same time it became apparent to the trustees of CEF that the Old Grammar School, which had been little changed since 1837, was in urgent need of significant work to improve its energy efficiency and to ensure it met the needs of the tenants and the young children at the Pre-School. Acting on specialist advice the trustees drew up a comprehensive programme of improvements. Because of the cost of

that programme CEF was obliged to suspend its annual grants in 2022 and 2023.

For the last two years the CEF has been working its way through that programme of improvements. The thickest possible insulation has been installed above the ceiling of the school room and to the roof of the hall, cloakroom and kitchen. Secondary glazing has been fitted to the main windows.

The old inefficient gas heaters have been replaced by new ones offering state of the art efficiency. The antiquated lighting has been replaced by LED lighting which provides more light at substantially lower cost. The old water heater has been replaced by a smaller, more efficient tank with modern insulation to ensure minimal heat loss.

The CEF has received generous support from Sustainable Charlbury towards all its energy efficiency work and also grants from Charlbury Beer Festival in 2022 and 2023 and from Wilderness in 2023. It is most grateful for that support without which it would not have been able to carry out the work so quickly.

There are still some works outstanding, in particular more secondary glazing, draught proofing and insulation. The CEF trustees are, however, hopeful that it may be possible to make some educational grants this year and they are meeting in May to review the situation. They recognize that in particular in the current post-Covid environment any support for young people in education is to be valued.

As soon as a decision has been taken details will be posted on the *Charlbury Info* website:

[https://www.charlbury.info/
community/90](https://www.charlbury.info/community/90)

*Janet Burroughs,
Chair of the CEF Trustees*



Cotswold Line Promotion Group

The main purpose of the group is to encourage the fullest use of the railway between Oxford, Worcester and Hereford and to improve connectivity between the railway, its local communities and other transport modes.

As a membership organisation, the Group continues to represent the views of its members, whether they be commuters or leisure travellers.

We welcome new members - both active and passive - and invite you to join us. Annual subscriptions are modest; details of fees and an application form can be found on the group's website: **CLPG.online** and at Charlbury station during opening hours.

Alex, the temporary ticket office clerk who re-opened the Charlbury booking office has now left GWR to further her career in the rail industry with West Midlands Trains.

She leaves with our thanks and best wishes for her future. I am told that a new, permanent member of staff has joined GWR, to be based at Charlbury and will commence duties here once a period of training has been completed.

A new timetable comes into effect on 2nd June, operative until 9th December. As GWR has discontinued publication of the useful pocket timetables, CLPG will shortly be printing 4,000 copies.

These will be sent to all members and will also be available at staffed stations along the line. With Network Rail we are working to remedy the problems between 'Heathrow Junction' and Paddington, which cause major problems elsewhere on the network, let's hope the new timetable will be a work of fact not fiction.

Regarding delays, compensation payment is available. The amount depends on the period of delay and further details can be found at *GWR.com*.

An enormous sum remains unclaimed and I encourage everyone to submit a claim. For those who buy 'advance tickets' on-line, it is possible to enrol for Auto Delay Repay. Delayed passengers will quickly receive an email from GWR acknowledging the delay and advising the sum due, with payment then being made by cheque or bank transfer.

When the system works well, it is good but it is infuriating when, having bought two tickets, it compensates for only one of the two. GWR are aware of the problem and are working to put it right.

Further details of the group's activities can be found on the CLPG page on the Charlbury website.

Brian Murray



Walking with the Cotswold Wardens

Below are the walks for June and July. More are constantly being added, these can be found on www.cotswolds-nl.org.uk

Friday 7th June

Sanderson Miller and the Red Horse

Moderate:

6½ miles 4 hours 10:00am

Starts: Upton House [National Trust] car park OX15 6HT

Hear about a fascinating local and enjoy expansive views.

Enjoy a visit to Upton House after the walk

Thursday 13th June

Walk with a Watery Theme – and a Rare Bloom!

Easy: 5 miles 2½ hours
10:00am

Starts: Banbury Hill Farm, OX7 3JH

With a fountain, a water mill, streams to cross and a watering hole to enjoy at the end, this walk has everything.

Wednesday 19th June

An Evening in the Eastern Cotswolds

Easy 3.5 miles 2 hours 6:00pm

Starts: Churchill - Please Park carefully near the church

A summer's evening in classic Cotswold country.

Thursday 25th July

Explore the tip of the Cotswolds

Moderate: 5 miles - 3 hours Starts 10:00am

Starts at Upton House [National Trust] car park OX15 6HT 10:00am

Explore this part of the Cotswolds with its far-reaching views. Walk finishes at lunchtime leaving time to explore House and Gardens.

Date and details to be confirmed but in the early part of the school holidays.

Walk with the Grandkids

A morning walk exploring the countryside around Stonesfield.

If you are on grandparenting duties a chance to get out of doors with the children looking at this fascinating area.

Full details of our walks can be found on

www.cotswolds-nl.org.uk

follow the walking and exploring link and click on guided walks. Walks are continually being added.

If you think you would enjoy leading walks and like to know more, please email cvw.east.guidedwalks@gmail.com we have a walks training day in April. We also offer courses on first aid and map reading.

Rosemary Wilson



Bridewell Gardens Open Days

We are Bridewell Gardens, a mental health recovery service based within a walled garden in Wilcote, Oxfordshire. We are delighted to open the gates to the public for our Open Days in 2024.

The vineyard and walled garden are open to the public during our Open Days on:
Sunday 9th June, 14th July, 15th September 11am-4pm

What to expect on an Open Day:

Visitors are encouraged to explore all parts of the vineyard and walled gardens. Bridewell produce will be on sale including our acclaimed organic sparkling wine made from grapes grown in the vineyard.

You'll find plants for sale, propagated at the gardens, the product of much hard work and attention as part of the day to day activities of the recovery service.

From our pop-up café you can enjoy the beautiful and peaceful surroundings of the garden, or bring a picnic to relax in the vineyard and make the most of your day out in this idyllic corner of West Oxfordshire.

Dogs on leads are very welcome. The gardens provide a chance for children to see a wide range of plants, fruit and veg, spot dragonflies by the pond, and count the chickens roaming the vineyard.

Come and speak to Bridewell staff and volunteers to find out more about the recovery service and how you can support Bridewell's work. Find inspiration

in the gardens tucked away in this beautiful valley and discover what goes on within the walls of the Walled Garden.

Cost:

A suggested donation of £5 per person.

The address is:

Bridewell Gardens, The Walled Garden, Wilcote, Oxfordshire, OX7 3DT (n.b. do check a map before visiting us as sat navs are not reliable.)

About Bridewell Gardens:

This year Bridewell's recovery service celebrates 30 years of creating a garden with and for people recovering from serious mental ill health.

The beautiful walled garden and vineyard in Wilcote, West Oxfordshire have become an oasis, a place of recovery, of calm and hope. Working in the gardens, people find the time and space to rebuild confidence and hope for the future and to work towards next steps in our local communities.

Using social and therapeutic horticulture, the gardens provide structure, routine, opportunities for learning and trying new things, and most importantly a

Bridewell Gardens



mental health recovery

Bridewell Gardens Open Days

community of people with shared experiences, where you can be yourself.

Bridewell's team of staff and volunteers bring a wealth of experience from the NHS, social services, other charity backgrounds, a wide set of horticultural skills.

The team help create a place that is supportive, non-judgemental, a haven for recovery.

Literally seeing the fruits of your labour, in the annual grape harvest, in homemade jams and chutneys, with roasted veg and soups, working in the garden connects people with growing, with nature and the beautiful green spaces in our local environment.

Typically people access the recovery service for over a year, seeing and contributing to a full growing season in the gardens, with time to find confidence and build strong connections with others.

"This is the only place I've felt able to share my diagnosis. I don't feel judged."

"Bridewell gives the gift of being outside. Something I need and struggle with when unwell."

Charity Number: 1158456

Rachel Green



A group at work



Potager

HN VG

Hook Norton
Veterinary Group

CARING FOR YOUR PETS, HORSES & LIVESTOCK
24-HOURS A DAY, 365 DAYS A YEAR

CHARLBURY: 01608 730085
HOOK NORTON HOSPITAL: 01608 730501



An independent practice established over 40 years ago, HNVG has a passionate team, dedicated to providing professional veterinary care of the highest quality for your pet, equine and farm animals.

Charlbury Branch Opening Hours:
Monday - Friday 8.00 am - 6.45 pm

Hook Norton Hospital Opening Hours:
Monday - Friday 8.00 am - 6.45 pm
Saturday 8.00 am - 2.00 pm

YOUR LOCAL, INDEPENDENT VETERINARY PRACTICE

HAPPY PLACE,
RESTORED

If you love your lawn,
you'll love GreenThumb.
Our year-round treatments
will give your grass the
TLC it deserves.



GreenThumb
LAWN TREATMENT SERVICE

Discover more at
greenthumb.co.uk



Scan here

Banbury branch - 01869 345333 banbury@greenthumb.co.uk



Charlbury Garden Society

The Garden Society has had a busy few months with the ever popular Spring Show and Plant Swap.

A visit to Blenheim Palace and the wonderful Open Gardens event, which raises funds for the Corner House will be taking place in the next few weeks.

Looking ahead we are hoping to have another successful show, this time the **Annual Show on 31st August.**

There has been a Flower Show in Charlbury for over 100 years. The first mention of a show is in 1910.



The image above is of Lady Dillon presenting the prizes that year.

While our Annual Show may not have such Edwardian splendour, we hope that we can continue the tradition of healthy competition between growers, bakers and stitchers! Please do consider entering something. We have made the

schedule much simpler and there will be lots of people on hand to help you. Have a look at the schedule on our website

*https://
www.charlburygardensociety.org.uk/*

One of the events at the show will be the Great Potato Challenge. At the Spring Show families took bags and seed potatoes to grow and we look forward to seeing how they got on when we weigh them during the afternoon.

We have decided this year not to award prize money although the coveted cups will still be awarded.

This leaves us with more funds to help local projects with 'greening' activities. We have been delighted to be able to help with the new bowls club wildlife area, the station planting, the Corner House garden and

bulb planting as part of the Town Council Street Champions initiative. If you have a gardening project for the community that you'd like help with then please let us know. We look forward to seeing many of you on 31st August.

Alison Derham

I am writing this on the day after taking part in a very moving commemoration of the centenary of Beating the Bounds tragedy.

We were honoured to be asked to represent Scouting, to remember the event alongside the community and to learn more of the history of that sad day.



(The photo on the left shows Ewart Taylor, one of two Scouts awarded the Silver Cross for Gallantry for his bravery).

We really value our links with the community and are happy to be involved in local initiatives whenever we can, such as path clearing, litter picking at the Beer Festival and hosting environmental activities at the Scout Hut.

Our repair programme continues, with a new ceiling and lighting completed (thanks to MJ Builders for their excellent and thoughtful work on this). Next will be further electrical work, including new heating and emergency lighting. We are very grateful to SusCha, Wilderness Festival and Blenheim for their support in this huge project, there is so much to do! We have welcomed two new members to our Hut Committee, helping with fundraising and bookings – more help is always welcome, please contact 1stcharlburyexec@gmail.com if you would like to be involved.

We are also very grateful to the Beer Festival for their donation last year, which enabled us to replace our two event shelters (battered by 40mph winds) and to buy a new octagonal tent for smaller events – the latter has just been used this weekend at a Scout camp at Youlbury and was pronounced a great success!

All sections will return to Youlbury for the Group Family Camp in June but before then we will celebrate the presentation of Chief Scout's Awards to Rufus, Jem (Bronze), Evie, Harri and Roman (Gold) later in May – congratulations to them all for achieving the highest award in their section!
Cheryl Horsey, Group Scout Leader

Cheryl Horsey, Group Scout Leader

PELLMANS

Your Local Solicitors

- **Business and Employment Law**
Contracts, Legal Compliance
and Disputes

- **Property**
Residential, Commercial
and Agricultural

- **Wills, Probate and Trusts**
Tax Planning and Lasting
Powers of Attorney

01865 884400

www.pellmans.co.uk

1 Abbey Street, Eynsham, Oxford OX29 4TB
Home visits and evening appointments available

BLENHEIM TAXIS

Local/National Airport Transfers
Airport specialists
Complimentary Wi-Fi
Charlbury based

07773 000 444

www.blenheimtaxis.com
email: enquiries@blenheimtaxis.com
All major credit cards accepted
Corporate accounts welcomed

COTSWOLD GARDEN DESIGNER



- Looking to improve your outside space but stuck for ideas on how to make the most of it?
- Want somewhere to entertain?
- A space for your children to play?
- Or maybe you just need a quiet place to relax, a calming, scented corner, just for you?

I can provide a full garden design, planting plans or a simple garden report - some ideas of how you could best use your outdoor space and the types of plants that you like and would suit the environment.



CONTACT LORRAINE:

lorraine@cotswoldgardendesigner.co.uk

07516262560

www.cotswoldgardendesigner.co.uk



Charlbury Bowls Club

The outdoor season has arrived. The green opened on Saturday 20th April and many members attended the opening, all keen to bowl on grass again. The league and cup matches started at the beginning of May. This year the club has a team in the Men's, Women's and the Mixed leagues. In addition, the club will continue playing Short Mat during the Summer with an afternoon league and an evening league to play in.

The Winter Short Mat finished in early April with the league Finals Day and presentations. Our afternoon league teams fared very well with Charlbury Sycamores winning Division Two and Charlbury Chestnuts finishing third in Division One. Next season we will have two teams in Division One. In the evening league, Charlbury Willows finished a very creditable third and

Charlbury Cedars fifth and Charlbury Oaks tenth. Well played and congratulations to all teams in the Short Mat this last season.

Charlbury Juniors were very well represented in the Wales vs England U21s friendly in April. A great day out was enjoyed by all.

The club hall remains available for hire and enquiries should be addressed to enquiries@charlburybowls.co.uk

If anybody would like to try their arm at either Lawn Bowls or Short Mat Bowls, please contact us at the above email address or drop by on a Friday afternoon at 2.00pm when both formats are being played.

*Chris Webb
Secretary*



Ashdown

TREE MANAGEMENT

Professional, local tree care

Removals, pruning, stump grinding and hedge cutting

Insured and qualified

Chris Murphy FdSc (Arb) NdArb
07738 151880


chris@ashdowntreemanagement.co.uk
www.ashdowntreemanagement.co.uk



CHARLBURY TOWN BARBERS

07907 802063

www.charlburytownbarbers.co.uk

 Facebook/Charlburytownbarbers1

14 Market Street, Charlbury OX7 3DP

Opening times:

Monday Closed

Tues—Friday 9.00am—5.30pm

Saturday 8.30am—1pm

Sunday Closed

DIRTY CARPETS, UPHOLSTERY, RUGS



Most carpets dry within the hour

Unbeatable results, removes almost all spots & stains call

GRIMEBUSTERS

01993 868924 01865 726983

www.grimebusters.co.uk

STAMPS

I wish to purchase stamp collections.

Friendly free valuation service without obligation and immediate payment.

Also, coins, medals and postcards

Contact David Lord 01993 881862
Email: davidlord@hotmail.co.uk



MOSSINATOR®
ROOF CLEANING SYSTEMS

Moss Removal & Roof Cleaning
Patio & Driveway Cleaning
Render & Brickwork Cleaning
Solar Panel & Skylight Cleaning
Installation of Bird Protection
Chimney Cowl Installation



Enhance the appearance of your property with our quality assured friendly service

info@mossinator.co.uk - 01865 362797

CHARLBURY COMMUNITY DIRECTORY

Please note that it is the responsibility of each organisation listed in the Community Directory to notify any changes to the Editor

Artweeks - Maureen Sparling (07779 779121)

All Together In Charlbury (ATIC)

To request help (01993 776277). To contact management committee (07487 413892)

Baptist Church - Kay Colyer (01608 810107)

charlburybaptistchurch@gmail.com

Charlbury Amateur Dramatic Society (CADS)

Sue Haffenden, Secretary 01608 676642

charlbury.drama@gmail.com

www.charlbury-drama.com

Charlbury Art Society (CAS) Joanna Shakir

secretary@charlburyarts.co.uk

Charlbury Beer Festival - Michael Peake

info@charlburybeerfestival.org

www.charlburybeerfestival.org

Charlbury Beer & Wine Circle - Brian Murray

(01608 819091)

Charlbury Bowls Club—Chris Webb

secretary@charlburybowls.co.uk

Charlbury Bridge Club— Secretary Monica

Wilkinson (01608 810560)

Charlbury Canoe Club - Hugh Belshaw

(01608 810130) *hughandjoan@uwclub.net*

Charlbury Chronicle - Susie Finch (07879

693733) *editor.chronicle@outlook.com*

Charlbury Community Centre—Daniela Jenkins

(01608 811878)

Charlbury Community Speedwatch

charlburycsw@gmail.com

Charlbury Community Workshop

www.charlburycommunityworkshop.co.uk

Charlbury Cricket Club -

www.charlburycricketclub.co.uk

Charlbury Day Centre - Tanya Stevenson (07871

795748)

Charlbury & District Probud Club

Mike White - *CPCKingfisher.ed@gmail.com*

Charlbury Green Hub - Christine Elliott

(01608 811057) *www.charlburygreenhub.org.uk*

Charlbury Garden Society

secretary@charlburygardensociety.org.uk

www.charlburygardensociety.org.uk

Charlbury Ladies Luncheon Club—Gill Grason

(01608 810154)

Charlbury Morris - Peter Smith (01608 811007)

peter@charlburymorris.org

www.charlburymorris.org

Charlbury Museum - Curator—

curator@charlburymuseum.org.uk

Charlbury Music Class - Peter Fry (01993

359189)

Charlbury Open Gardens - Catherine Goyder

csfgardens@charlburystreetfair.org

Charlbury Pioneer Country/Western Club

(Ray & Margaret) (01993 831345)

Charlbury Pre-School—Emily Dytor

emilydytor@gmail.com (01608 811200)

Charlbury Royal British Legion - Nick Potter

(01608 810388)

Charlbury School -Head (01608 810354)

office@charlburyschool.org

Charlbury School Association -

charlburySA@outlook.com

Charlbury Scout Group - Cheryl Hornsby -

cheryl@redstonecomputers.co.uk

Charlbury Society - Chairman, Nikki Rycroft

n.rycroft@doctors.org.uk

Charlbury Street Fair - Chairman—Alan Carreras

(csfchairman@charlburystreetfair.org

Charlbury Tennis Club - Mark Jarman (01608

811692) *charlburytennis@hotmail.co.uk*

Charlbury Town Council—Lisa Wilkinson, clerk

(07311 259412) *charlburytownclerk@gmail.com*

Charlbury Town Football - Keith Claridge

(01608 810201 or 07870 426707)

Charlbury Town Youth Football Club - James

Ball (01608 810270) *jolliecat@btinternet.com*

Charlbury Town Walking Football

John Munro *charlburytownwff@gmail.com*

(07388 010496) *www.charlburytownwffc.co.uk/*

walking-football

Charlbury Wildlife Society

charlburywildlifesociety@gmail.com

Charlbury Women's Institute - President -

Heather Hill *charlburywi@oxfordshirewi.co.uk*

Corner House Community Bookshop—Neil

Pakenham-Walsh (01608 811899)

Corner House and Memorial Hall -Office (07826

056496)

Churches Together - Rosalind Scott, (01608

810562) *rosalind.scott@hotmail.co.uk*

Cotswolds Voluntary Wardens - Simon

Walker (01608 811414) *simon.iets@btinternet.com*

Dementia Friendly Charlbury— Meryl Smith

(01608 810192) *charlburydf@gmail.com*

Friends Meeting House: Sue Terry (01608

811033) email: *sueeterry@btinternet.com*)

Holiday Club

parishoffice@stmaryscharlbury.co.uk

Methodist Chapel - Sue Tokumine (01608

810366) *suetok@hotmail.com*

Mind in Chipping Norton (Mental Health

Support) (01608 645296)

Riverside Festival - Andy Pickard (01608

810635) *admin@riversidefestival.charlbury.com*

www.riversidefestival.charlbury.com

St Marys C of E Church Rev. Fergus Butler—

Gallie (01608 810230)

St Teresa's RC Church Fr Clive Dytor (07484

158642)

Sustainable Charlbury - Liz Reason (01608

811212)

The Bell Inn (01608 810278)

The Bull Inn (01608 810689)

Thomas Gifford Trust- Chris Potts (01608

811878) *chris.potts@blakemorgan.co.uk*

United Nations Association (West

Oxfordshire) - Neil Pakenham-Walsh (01608

811338)

Walkers are Welcome Tony Merry 07580

917584 *tonyhmmerry@gmail.com*

Wychwayz Border Morris - Teresa Duester

(01608 810934)

www.charlbury.info - Richard Fairhurst



Charlbury's Police Community Support Officer

C9837 Wesley Smith

To speak to us about any concerns you may have:

call 101 if it's a non-emergency

or 999 in an emergency

www.thamesvalley.police.uk

also sign up for free crime alerts

www.thamesvalleyalert.co.uk

CHRONICLE ADVERTS

Advertise your business in the **Charlbury Chronicle** and reach over 1600 residences.

To place an advert please ring
Graham Jowett on 01608 810666 or
email:
advert.chronicle@outlook.com

MAILING LIST

We have a mailing list for people wishing to receive the *Charlbury Chronicle* who no longer live in the town. **Now £5.50 per four issues; £6 per four issues for overseas subscribers.** Large-print £2.50 for **each** copy. If you wish to be put on the mailing list, please contact Graham Jowett (address in right hand panel).

Please note that **ALL** cheques for advertising, mailing list or donations should be made payable to *The Charlbury Chronicle* and should be sent to The Treasurer, Jessica Youngson, whose contact details are in the panel on the right.

CHARLBURY CHRONICLE CONTACTS

Editor: Susie Finch

tel: 07879 693733

editor.chronicle@outlook.com

Assisted by:

Julia Caston: 01608 810240

Barbara Allison: 01608 811262
and others

Advertising & Mailing List:

Graham Jowett,

tel: 01608 810666

gjowettchronicle@btinternet.com

advert.chronicle@outlook.com

Treasurer:

Jessica Youngson

treasurerchronicle@outlook.com

Distribution:

Maureen & John Walker:

walkermaureen542@gmail.com

Robert Caston: 01608 810240

And thanks to Pauline Jackson for proof-reading this issue of the Chronicle.

The **Charlbury Chronicle** is produced and distributed free to every household in Charlbury. All those involved in its preparation, work on a voluntary basis.

The **Charlbury Chronicle** aims to be impartial and independent and cannot be held responsible for any of the views expressed in its pages.

The editor reserves the right to alter or adapt any articles submitted for publication although hoping to discuss any major changes with the authors first.

The **Charlbury Chronicle** acknowledges the support of our advertisers and individuals who generously contribute to its funds and hope that any reader using their services will mention the **Charlbury Chronicle**.

Printed by

KMS Litho Ltd, Hook Norton, OX15 5LS

01608 737 640

enquiries@kmslitho.co.uk

www.kmslitho.co.uk

Exceptional Breadth | Individual Focus



Co-Educational | Independent | Day
From 4 – 18 | Extensive Transport Network

cokethorpe.org



SHAW & Co.

Providing legal advice in London and Oxfordshire for 35 years

1 Church Street

Charlbury

Oxfordshire OX7 3PW

Telephone 01608 810100

andrew@shawandcompany.co.uk

Wills, Probate and Administration

Powers of Attorney

Executor & Trustee Services - Inheritance Tax Planning

Property - House and Flat Conveyancing

Commercial Leases and Landlord and Tenant matters

Commissioners for Oaths

"...probably the best and most approachable lawyers I have ever used....."

10 Market Place
Chipping Norton,
Oxon OX7 5NA
Tel: 01608 644808
Fax 01608 644809



1 Church Street
Charlbury
Oxon OX7 3PW
Tel: 01608 811146
Fax 01608 810050

22 The Parade
Oxford Road
Kidlington,
Oxford OX5 3DB

www.fairfaxandcompany.co.uk
charlbury@fairfaxandcompany.co.uk

15 High Street
Bloxxham
Banbury
Oxon OX15 4LT

Free Valuations No Sale—No Fee
Specialist Lettings Department
Independent Mortgage Advice
Low Cost Buildings Insurance

Fairfax & Co. offer unbeatable value and expert property advice from professionals