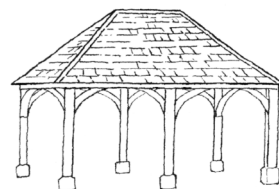


Charlbury Chronicle



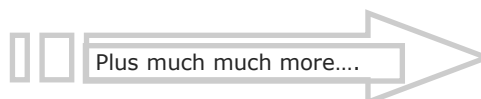
Volume 28 Number 1

Spring 2024

The Charlbury Chronicle is a free quarterly local community publication run by volunteers covering news and events for Charlbury and the surrounding area

Inside this issue:

Charlbury Museum	4
Walking with the Wardens	5
Cotswold Line Promotion Group	10
Coffee Break Page	11
1st Charlbury Scouts	23
Charlbury Community Centre News	24
North Leigh Roman Villa	27
Charlbury Church Services	28
Charlbury Town Council report	32
Community Directory	47



Contacts:-

Editor: editor.chronicle@outlook.com
Advertising: adverts.chronicle@outlook.com
Distribution: walkermaureen542@gmail.com

Charlbury Garage

Hixet Wood, Charlbury, OX7 3SB

01608 810898

08:30 – 17:00 Monday to Friday

Attending to motorists' needs for over 40 years, we offer a local, friendly, helpful & trustworthy service

- MOT & Pre-MOT
- Tyres & Exhausts
- Servicing
- Batteries
- Aircon
- Bodywork

Competitive tyre prices

Half-price MOT with Full Service
Courtesy car available
Cars bought & sold



www.charlburygarage.co.uk

From the Editor

First of all I would like to thank all the many contributors who make this newsletter so varied and interesting and all the distributors who bring this to your front door.

And it's the sad 100th anniversary of the drowning of some children when "beating the bounds" in May 1924—more information on this can be found in the museum's article on p2.

There is to be a Street Fair Quiz Night on 23rd March—see page 4. And if you would like to help out with Street Fair please see the directory at the back of the Chronicle for whom to contact. They really do need your help.

A reminder that the museum reopens on Saturday 30th March at 10.30am.

Artweeks in Charlbury is happening from 4—12 May. See advert on p42.

Wychwayz Border Morris in conjunction with the

Stonesfield Folk Dance club will be holding an event in the Memorial Hall on 9 March. See p37.

I have received a copy of a book written by Rob Stepney called "From Walcot to the World" which has many articles regarding Charlbury included. It's a good read and can be bought from Waterstones.

The Lent lunches dates are on p.26.

And don't forget to vote on 4 May—the Town Council are up for election and would like to know if there are any of you who would be interested in joining the council. See p.32

And Simon Walker has given us an impossible quiz to work out—see Coffee Break page 11. I couldn't work it out!

If you have any ideas on what else you would like to see in the Chronicle, please do contact me at:-

editor.chronicle@outlook.com

I hope you all have a Happy Easter—and don't eat too many eggs!

Susanna Finch

**Please note the deadline for articles for the Summer issue is 1st May 2024
Please send all articles to *editor.chronicle@outlook.com***



Charlbury Museum & Heritage Centre

Commemorating the Centenary of the 'Beating of the Bounds' tragedy of 1924

*By oak and ash and old elm tree
With laugh and song and merriment
To beat the bounds of Charlbury
The children went, the children*

The first verse of Ian Colville's poem 'Beating the Bounds' evokes the cheerful spirit of May 29 1924 as the townspeople of Charlbury gathered to walk the parish boundaries. It had been thirteen years since the ancient custom of 'Beating of the Bounds' or 'perambulations', had taken place; during the devastating years of the First World War (1914-18) such annual events were forgotten. The new decade of the 1920s marked a time of optimism in the aftermath of that horrific war, and so on that sunlit Ascension Day in 1924, Charlbury Parish Council revived the 'Beating of the Bounds' walk.

Photographs from that fateful day in May capture the joyous mood of gatherings on the vicarage lawn, groups of school children, scouts and guides, families dressed in their finery for the occasion, relaxing picnics along the route. In the river Evenlode young boys can be seen splashing in the shallow waters and waving their 'beating sticks' carved from willow or birch. The idyllic, tranquil setting of: *The willow bordered Evenlode, Where kingfishers go flashing by* (Colville's words) tragically changed when the last punt ferrying walkers across the river capsized, screams for help filled the air.

Several punts had already crossed the river guided by Frederick Thornett, Clerk to the Parish Council, the particular part of the river concerned had the ominous name of Devil's Hole. Here the river was several feet deep in places, though the stream was normal and declared safe. In the last punt were three adults and several children; Thornett described the punt tipping, then capsizing throwing

everyone into the river, children clinging to him as he swam in the water. Other witness statements given at the Inquest, held at The White Hart Hotel give the disastrous details of three tragic deaths:

Roy Cosier aged 14, who could only swim a little, attempted to save Evelyn Pickett aged 16, who was with him in the punt. She clung to his neck, when close to the bank she fell off and disappeared... James Bishop aged 13, Cyril Smith aged 9, could not swim and drowned

Acts of heroism saved others: Ewart Taylor a boy scout aged 16, rescued Olive Postle aged 10, he was the son of Charles Taylor, Chairman of the Charlbury Parish Council who had been in the last punt. Ewart was awarded a Gallantry Medal and given a certificate signed by Robert Baden Powell. Roy Cosier also received a Gallantry Medal. Mrs. Thornett, school teacher, saved two children and Mr. Taylor carried an unconscious Miss Budd to the bank (poor Miss Budd, a large lady, whom some blamed for the punt's capsize, though the Inquest did not mention her). In 1999, 75 years after the tragedy, Ewart Taylor and Patricia Stockman (nee Olive Postle) were reunited again in Charlbury; Patricia had written an account of the disaster for The Charlbury Chronicle (March 1999) This special occasion was organised by Lynette Murphy and Rob Stepney, author of 'A tragedy which engulfed a town' Oxford Times (28.5.99)

The grave of Evelyn Clara Pickett, James William Bishop, Cyril Stanley Smith can be found in Charlbury Cemetery. On June 6 1924 a procession of over a 1000 walked to the cemetery for their burial.

Charlbury Museum will be commemorating the centenary with a small exhibition, showing historic photographs, reportage, unravelling the stories from that ill-fated day in 1924. If you are a descendant of anyone who was at the 'Beating of the Bounds' walk a 100



Commemorating the Centenary of the 'Beating of the Bounds' tragedy of 1924 (contd)

years ago, the museum would be pleased to hear from you.

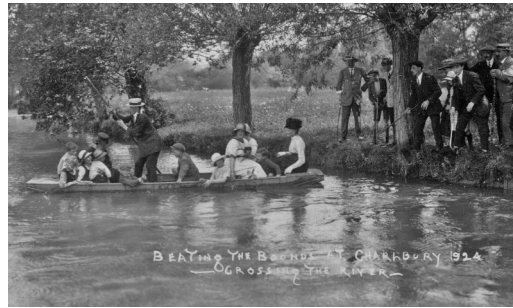
Please contact: info@charlburymuseum.org.uk

The exhibition will be on from Easter Saturday when the museum opens for the season: Saturdays 10.30 – 12.30 , Sundays & Bank Holiday Mondays 2.30 - 4.30pm.

Sue Rangeley, Trustee



Beating the Bounds' 1924 Picnic lunch



Crossing the river in a punt



The Funeral procession in Thames Street walking to the cemetery



**Charlbury
STREET
FAIR** Street Fair 2024

We are very pleased to be able to announce that Alan Carreras has agreed to be the new chair of Charlbury Street Fair and under his leadership, we look forward to putting on some fantastic events which celebrate the life of our wonderful town and also raise money for the upkeep and improvement of the Corner House and War Memorial Hall.

The next event in the Street Fair Calendar is our ever-popular Quiz which will be on **Saturday 23rd March at the Memorial Hall. Doors open at 7.00pm.** Tickets cost £15 per person to include food: there will be a pay bar as usual. Form your own team of up to six people or contact us and we may be able to fit you into an existing team. Tickets available via cfsquizbooking@gmail.com.

The date for Open Gardens will soon be advertised on Charlbury Info and other online platforms.

We have already started planning to make Charlbury Street Fair even bigger and better this year. **September 21st** is the date so put it in your diary now.

If you think you could help us to organise the Street Fair and the other events we put on, please get in touch by emailing csfchairman@charlburystreetfair.org.

The more help we have, the better the events will be so please, have a think to see if this is something you could offer. A few hours a month is all it takes and it is great fun!

Liz Partington

<p>Katrina Moss Inner Peace Reiki Treatment in the comfort of your own home Level 2 Reiki practitioner Treatment and public liability insurance Reiki complementary healing can be beneficial in many ways Gift vouchers available Please contact me for a consultation 07824 357690 katrinamoss1979@icloud.com</p>



Walking with the Cotswold Voluntary Wardens

With Spring around the corner and hopefully some drier weather its time to get out and enjoy some local walks. Walking can be a solitary affair, or you can join a group. Walking with a group can be a social experience, the opportunity to meet others who enjoy being out of doors and following a route led by someone who has worked it out, ironed out any problems along the way and knows interesting details.

Below are some local walks and some a little further afield: -

A Watery walk in the North Cotswolds

Thursday 21st March
Meet at Temple Guiting Village Hall
Starts 10:00am
7 miles 3.5 hours

Lockdown Loop

Friday 22nd March
Easy 4.5 miles 3 hours
It is now, almost to the day, 4 years since the country was locked down. This walk was done regularly by a warden during 2020. We pass through the villages of Milton under Wychwood, Shipton under Wychwood and the surrounding countryside giving variety and interest.
Lunch options after the walk.
Start: New Beaconsfield Hall Shipton under Wychwood OX7 6BH

Asthall, less history, more views!

Saturday 23rd March
Moderate 7 miles 3.5 hours
A circular walk with some lovely views across Asthall and the Windrush Valley. Please bring refreshments for a mid-morning break with a view.

Start: Park at the top lane in Asthall near to the entrance to Asthall Manor. OX18 4HW

Batsford Circular via Sezincote

Tuesday 2nd April
Meet at Batsford Arboretum lower car park GL56 9QB
Starts 10:00am
6.5 miles 3 hours

Stone Bridges and Bacon

Friday 12th April
Meet at Victoria Inn Eastleach GL7 3NQ
Starts 10:00am
4.5 miles 2.5 hours

Stonesfield and Beyond

Wednesday 17th April
Meet at Stonesfield Village Hall
Starts 10:00am
5 miles 2.5 hours

Burford from Various Perspectives!

Thursday 25th April
Moderate 8.5 miles 5 hours
A circular walk from Burford which includes a visit to the medieval hamlet of Widford and the pretty "scene stealing" village of Shilton. Please bring a drink and snack for a mid-morning break.
Start: Burford Main Car Park OX18 4S

What links Oxfordshire, a Monarch and a Diamond?

Thursday 23rd May
Meet at Bourton on the Water War Memorial
Starts 10:00am
8.5 miles 4.5 hours

Full details of our walks can be found on www.cotswolds-nl.org.uk follow the walking and exploring link and click on guided walks. Walks are continually being added.

If you think you would enjoy leading walks and like to know more, please email cvw.east.guidedwalks@gmail.com we have a walks training day in April. We also offer courses on first aid and map reading.

Rosemary Wilson



Charlbury Bowls Club news

Since our last submission we have held our AGM. This welcomed a new Treasurer, President and Club Secretary. A couple of months in and we are still finding our feet. Many thanks to the previous incumbents who all did sterling work and in the case of 2 held office for many years.

Our five Short Mat teams, playing indoor bowls, are all performing well in their respective leagues. The afternoon teams, Chestnuts and Sycamores are both doing very well with Sycamores top of their division at the time of writing. In the West Oxon evening League all three of our teams, Cedars, Oaks and Willows are having decent seasons against some very strong teams. Willows are currently our highest placed team but, with just less than half the season to play this could easily change.

Staying with Short Mat, Charlbury has

been very well represented in the County team with 5 players regularly representing the County this season. Some of our juniors also represented England U21s in a game against the County team in January.

The Club is also well represented in County and National competitions with pairs and fours teams progressing well.

The green is undergoing Winter treatment in preparation for the Summer Lawn Bowls season and is beginning to look good.

The club remains Hall available for hire and enquiries should be addressed to enquiries@charlburybowls.co.uk

Finally, the Easter Bingo will take place on Monday 25th March.

*Chris Webb
Secretary*

Charlbury Bowls Club

Ticknell Piece Rd

Easter

BINGO

All ages welcome

Monday 25 March

Doors open 6.00pm, start 7.00pm, Bar

Premium Sponsor of Charlbury Bowls Club



Charlbury Garage
Wheat Wood, Charlbury, OX7 3SB
01608 810898
info@charlburygarage.co.uk
MOT, Servicing, Tyres & Exhausts, Body, Trim & Alloy Wheel Repairs
www.charlburygarage.co.uk



8 games &
2 Specials.
6 books—£8
6 flyers—£1
per game







DERWENT HOUSE

Home of British Craft and Makers

*Oxfordshire's exciting interiors store for British handcrafted Sofas & Armchairs,
Organic Mattresses & Beds, Furniture and Homewares*



Visit Derwent House, 3 Bridge Street, Witney, Oxfordshire, OX28 1BY T: 01993 212678
Free parking to the rear of the store

derwenthouseliving.co.uk

Instant nostalgia from the BBC

BBC's Memory Radio provides you with an experience in sound of days gone by. It features specially selected content from the BBC Radio Archives, decade by decade from the 1940s to the 1990s. Each recording has been specially designed to create an audio experience for people living with dementia but will be of interest to anyone wanting to indulge in some instant nostalgia. There is thought to be a strong correlation between overall well-being and musical activities for those living with dementia and the BBC hopes that their Music Memories website will be helpful and enjoyable. Go to <https://musicmemories.bbcrewind.co.uk/home>.

Moving Music

This series of concerts is devised especially for people living with dementia and their families, friends and carers to enable them to enjoy a concert experience together and to help unlock memory and movement through the power of music.

The next concert will run twice on Tuesday 16 April with Derek Paravicini performing on piano and Hannah Davey singing with the piano and with the audience.

You can attend at either of these times:
11:30am-12:30pm, refreshments from 11:00am
2:00-3:00pm, refreshments from 1:30pm

The venue is Silk Hall, Radley College, Kennington Road, Radley, OX14 2HR (Oxford Bus Company, city35 stops outside the gate)

There is a requested admission charge payable at the door: £5 (or pay what you

can), including refreshments (carers free). Booking is essential - please reserve your places and parking in

advance (Round Pavilion car park) and pay at the door
Tel. 01865 251305 Email: movingmusicconcerts@gmail.com For further details of the Moving Music project go to <http://www.soundresource.org.uk/>

Chipping Norton Theatre Relaxed Performances and Screenings

Relaxed Performances and Screenings are open to everyone but are particularly suitable for people living with dementia and their carers and for people with learning disabilities. Tickets are £5 and carers go free.

For details of forthcoming screenings in the coming quarter go to The Theatre website here: <https://www.chippingnortontheatre.com/visit/access/relaxed-events> There is "The Colour Purple" from 3 (7.30 pm), 4 (10.30 am) and 6 (7.30 pm) March

Contact The Theatre Box Office for further details on 01608 642350.

Dementia Friendly Charlbury (DFC) is a group of volunteers who want Charlbury to be a friendly and welcoming place for everyone to live, especially people with memory and thinking problems. If you have any comments or concerns to pass on to DFC or would like to receive information about living with dementia and support available, you can contact us on 01608 810192 or email us at charlburydf@gmail.com.

Meryl Smith



Charlbury Beer and Wine Circle

The last event in the Circle's programme for 2023 was our Christmas dinner, again held in the Memorial Hall, with outside caterers doing the work and leaving members and guests free to enjoy the evening. Thank you Laura and Becky for the delicious food. Some imaginative work by the committee, with the help of Jess, Margaret and Shelagh, transformed the hall into a truly welcoming venue and ideally suited to the occasion.

For those who braved the bitter cold for January's tasting, they were rewarded by a bumper eight wines provided by the Chair, Treasurer and Secretary, as though to suggest that 'dry January' might be an unknown within the Circle. The Secretary was almost drummed out of office after a definite 'thumbs down' for a Sparkling Shiraz but was saved by a wonderful Pinot Gris from the recently founded, gold medal-winning winery of Steve Bird in New Zealand. The Chair and the Treasurer are secure in their posts with their choices; from Ant a well-received blend of Tempranillo & Shiraz followed by a fine Rioja Reserva, while from Graham came a delightful Aligote with an intense, crisp fruitiness from Bouzeron in the Cote Chalonnaise area of Burgundy. His second was a very enjoyable, medium bodied Bordeaux Superieur which most of us thought a good buy at £11.99.

February through to September's AGM sees a full and varied programme, starting with member Ursula providing a selection of wines from her native South Africa. An enjoyable evening is anticipated with the presenter offering first-hand knowledge of the country and its wines .

During the following six months we are delighted to be able to welcome the professional knowledge of Peter Tompkins, from the recently-merged wine merchants Goedhuis & Co and Waddesdon Wine, to be followed a month later by Marcus Thornton from Hayes, Hanson & Clark, the wine merchants in Stow-on-the-Wold. In May members Deborah and Chris will present a selection of wines they have discovered while working and travelling in various countries of the world. Also included in the programme will be a walking tour in Oxford, a BBQ and a garden party.

Our tastings are held in the Memorial Hall, usually on the third Monday of the month. Guests and new members will be made very welcome but we do ask that you tell us of your wish to attend.

Brian Murray, Secretary
sec.charlburybeerandwine@yahoo.com
Ant Horn, Chair
charlburybeerandwinecircle@gmail.com

CHRONICLE ADVERTS

Advertise your business in the **Charlbury Chronicle** and reach over 1600 residences.

To place an advert please ring
Graham Jowett on 01608 810666 or
email:
adverts.chronicle@outlook.com



Cotswold Line Promotion Group—Who We Are and What We Do

CLPG is a membership organisation founded 45 years ago, when there was a post-Beeching threat to Charlbury's railway service. The proposal to sever the line by halting all services between Moreton in Marsh and Evesham was thwarted, with no small measure of thanks due to the late Sir Peter Parker, the then chairman of the British Railways Board, who used Charlbury Station to reach his home in Minster Lovell. Sir Peter was supportive of CLPG for more than twenty years – from our foundation until his death in 2002.

The main purpose of the group is to encourage the fullest use of the railway between Oxford, Worcester and Hereford and to improve connectivity between the railway, its local communities and other transport modes.

We arrange charter trains to attractive day out destinations for members and the public.

We liaise with our local heritage railways, the Gloucestershire and Warwickshire Steam Railway (GWSR) and Severn Valley Railway (SVR), to enhance appreciation of railway history and heritage and to encourage leisure travel.

We have just made a three figure grant to the Charlbury station gardening team, led by Georgie Slack.

We make financial contributions to support other funding for improvements to railway stations.

Although we have achieved a lot during those 45 years, there is always more to be done. Most recently we played a full part in getting the station ticket office closure proposals abandoned by asking members and the public to sign a petition or submit their objections to *Transport Focus*.

We welcome new members - both active and passive – and invite you to join us. Annual subscriptions are modest; details of fees and an application form can be found on the group's website: **CLPG.online** and at Charlbury station during opening hours.

Further details of our activities can be found on the CLPG page on the Charlbury website.

Brian Murray

CHARLBURY MEALS ON WHEELS

Meals on Wheels prepares and delivers meals at lunchtime on Tuesdays to elderly and disabled people in Charlbury and Stonesfield. Meals now cost £4 delivered.

We are now accepting new recipients. Please ring Susan Merry on 07979 840438 or email susanmerry2@gmail.com.

We also urgently need an additional cook to join the team on a monthly rota. If you are able to help please contact Susan in the first place.



Coffee break page

Compiled by Simon Walker

Here's a list of seemingly random sets of words, in no particular overall order (even if it looks like it in places). There's a prime number in there too – 47 of the words are connected. There's nothing fishy about it, apart from a small but vigorous shoal of red herrings.

Please work out what the connection is:

Arrival and departure;
Windy but not blowy;
Cyanobacteria but not bugs;
Nativity but not birth;
Inspected but not viewed;
Ravioli and macaroni but not spaghetti;
Vanilla but not pistachio;
Hippopotami and mongooses;
Alligator but not crocodile;
Wapiti but not deer or elk;
Paranoia but not delusional;
Ill but not unwell;
Melancholia but not depression;
Diatonic but not in scales;
Maestro but not expert;
Contralto but not soprano;
Sarcastic but not cutting;
Frugal but not stingy;
Muddled but not confused;
Aback but not affronted;
Kiss but not cuddle;
Meddle but not interfere;
Correct but not right;
Named and shamed;
Translation and interpretation;
Kinky but not curly;
Lamina but not plate;
Motion and movement;
Order but not arrangement;
Uplift but not raise;
Outwith but not without;
Nordic but not Scandinavian;
Vibrant but not colourful;
Tax but not duty;
Gymkhana but not point-to-point;
Wisteria but not ivy;
Nepotism but not favouritism;
Nine and ninety-ninth;
Idea but not brainwave;
OK – have you worked it out yet?

Answer on page 34

So, now you've got the answer – what four are missing?



ROYAL BRITISH LEGION – CHARLBURY BRANCH

The Poppy Appeal for 2023 raised £6,600.39. We would like to thank our Poppy Appeal Organiser, Kim Harrison and all those who collected and contributed.

Annual Band Concert 10 November 2023

A lovely evening where we were entertained by Jubilee Brass, conducted by Cliff |Sadlor. Our guest of honour was Yanto Evans, ex Parachute Regiment now County Poppy Appeal Organiser for Oxfordshire. Thanks to Kim Harrison our Poppy Appeal Organiser for arranging the assistance of the young people from the RAF Cadets.

Poppy Appeal collector awards were due to Alison and Richard Cherry for 10 years, Rory and Miranda Macarthur and Jim Pearce for 5 years.

Branch Certificates were presented to Mrs Leah Fowler and Mrs Frances Canham.

Remembrance Sunday 12 November

The parade led by Major R.N. Potter and Piper Steve Duffy marched to St Marys Church.

The Standard was carried by Doug Oldrey with Barry Canham and Cyril Kerry as escorts.

The Service was taken by the Rev. Canon Judy French.

Wreaths were laid in the Memorial Chapel by Mrs Alison Dereham D.L., Cllr. Sqr. Leader Gary Harrison for Charlbury Town Council, for Charlbury WI Heather Chambers, for Retired Oxon Fire and Rescue Andy Pickard, by representatives of Thames Valley Police, Oxon Fire and Rescue and the Scouts and Guides Association and for the Branch Mrs Leah Fowler.

The Kohima Epitaph was delivered by Jane Parsons. The salute was taken by Col. Peter Durrant M.B.E.

Xmas Tree Festival at St Mary's

We are pleased to announce that the Branch entry was judged joint first with the Tennis Club.

Coffee Mornings

1. A Branch Coffee morning will be held on Saturday 24 February 2024 in Charlbury War Memorial Hall For information please telephone 01993 357468

2. A coffee morning will be held on Saturday 8 June 2024 to mark the 80th Anniversary of D.Day. This will be held in the War Memorial Hall from 9.45am to 11.45am and all proceeds from this coffee morning will go to The Poppy Appeal.

Trip to the REME museum, Lyneham Open to all members and non members alike.

The Branch is organising a trip to the REME Museum on Saturday 18 May 2024, leaving Spendlove Centre by coach at 10.00am, returning to Charlbury at 4.30pm. To express an interest, make a booking or for more information please contact Jane Parsons on 01993 357468 or Major Nick Potter on 01608 810388 by 15th April. It is expected that the cost for the coach will be £20 per person. Admission to the Museum will be extra at £6.50 each for veterans and anyone else over 60 years of age; for other adults the admission charge is £9.00.

Branch Meetings

The Branch Committee continues to meet regularly, usually on the 3rd Thursday of each month with the exception of August and December. Meetings start at 8.00pm except for those held in the winter months i.e. November, January, February and March when we will convene at the earlier time of 3.00pm. A full list of dates plus any notification of change to committee dates is displayed in our noticeboard outside Charlbury Town Barbers.



Assistance

For further information about the work of the Legion, how to join or how to obtain assistance, please contact Nick Potter [Branch President] on 01608 810388 or Sqr Leader Gary Harrison [Branch Chairman] on 07826 898499 or Jane Parsons [Branch Secretary] on 01993 357468. The Branch Membership Secretary is Barry Canham on 01608 811176 who will assist anyone who is still experiencing difficulty with the new membership subscription system.

The telephone number for the Royal British Legion Contact Centre is 0808 8028080. This is a countrywide service.

Jane Parsons

D S JONES

BUILDING, ROOFING & PROPERTY MAINTENANCE

All aspects of building, roofing and property maintenance undertaken
For all enquiries call or email

07496149990

dsjmaintenance@hotmail.com
Instagram: @dsjonesbuilding



Free Delivery

within 10 miles of Long Harborough

☎01993 880 500 ✉info@bowards.co.uk



- Tiling & Slating
- Flat & Felt Roof Systems
- Guttering & Fascias
- Chimney Works
- EPDM Rubber Roof Systems
- All Roof Repairs
- Moss Removal
- Aluminium Gutter Systems
- 35 Year Guarantee
*new roof installations
- Velux/Dormer Works

Fully Insured

All Major Credit Cards Accepted

01993 700 725 / 07789 556495

info@countryroofingltd.co.uk
www.countryroofingltd.co.uk





PROFESSIONAL ARBORICULTURE

ALL ASPECTS OF TREE
SURGERY
UNDERTAKEN

FULLY INSURED

FREE QUOTATIONS

(01993) 868001
office@jagtrees.co.uk
www.jagtrees.co.uk



Fitness 4 Seniors

FALLS PREVENTION BY LOUISE BARNES



Strength, Stability, Flexibility
Evidenced-based Falls Management Programme (FaME)
Build balance confidence and strength for your everyday activities

Charlbury Community Centre
Tuesdays 3.00pm (1hr)

Also on Mondays 10.00 am (1hr) – The AM Hall, Middle Barton

1st class £4 with this voucher

£6 per class. Book your place:

07879 685579 | louisebarnespt@gmail.com



Louise Barnes FCIMSPA, Senior Activity and Health Practitioner, Personal Trainer, The Chartered Institute for the Management of Sports and Physical Activity.

GET RID REMOVALS

Small local company specialising in:

- Full/part house moves: local & long distance
- All types of removals: local & long distance
- All types of clearance: house, office, garden, loft and shed
- Removal and recycling of any unwanted items: furniture, bric-a-brac, books, white goods.
- Removal of single items upwards
- Light Haulage



07538 244 861
hello@getridremovals.com
www.getridremovals.com



How far can we go to make the Corner House more fit for the people of Charlbury?

The Corner House trustees are eager to improve the building to it is better equipped to serve the interests of the people in our town. There is much that could be done but we are trying not to be overwhelmed by too many tasks all at once. Our strategy is to work through improvements one step at a time.

Our first priorities have been set as improving access and safety by relocating the existing staircase, the installation of more efficient heating arrangements and providing proper toilets including a toilet suitable for those with mobility issues.

But we cannot proceed without the funds to do these jobs, and also—because this is a listed building—approval from the district council planning committee. On planning, the district council conservation officer has raised an objection.

There are some voices uncomfortable with the ideas we have developed. These relate to a perception that the existing staircase has significant heritage value, that the dumbwaiter installed in the wartime to service a British Restaurant on the first floor is historically interesting

and that putting toilets in the previous kitchen area (originally built as a workshop) does not respect the room. They also apparently don't like the proposal to install some modest lift arrangement to help people up to the first floor.

All Charlbury values the building and know we are fortunate to have it as a town asset. But the trustees have the view it must be updated if it is to survive as a functioning building. Their hopes are to enhance the building whilst respecting its heritage and character. We need encouragement in our efforts. We will resubmit our planning application with further detail.

When we eventually are successful with the planning decision makers, we of course need the funds to go ahead with these identified first steps. For that we look for local contributors to help make this possible. Commitments of financial support are therefore really important at this stage.

Roy Scott, chairman of the trustees

CORNER HOUSE AND MEMORIAL HALL

Office: 07826 056496
Office hours: Mon 9.30am - 11.30am; Wed & Sat: 9am to 12 noon
Emergency Contact:
Roy Scott (01608 810562)

Charlbury Society

Mid way through this season's programme, as I write this, we are about to hear from Dr Lidia Arciszewska, Cabinet Member for the Environment, who will tell us about recycling in West Oxfordshire, and answer all our questions about what should and should not be put in our blue bins and the environmental impact of transporting the contents both in the UK and abroad and burning the contents of our rubbish bins.

This will be our final 'winter' talk by Zoom and we revert to the Memorial Hall in March for a talk by Melanie King, author and historian on the Food of the Gods...chocolate. She will share some of the lesser known myths and strange adventures of chocolate and we are sure members will join us on the first Thursday evening in March as we can promise you a little surprise as you arrive!

On April 4th, when spring has hopefully arrived, Robin Lane Fox, classicist, historian, and gardening columnist for the Financial Times will give a talk on the history of gardens in Oxfordshire.

Our May talk which coincides with a short AGM will be held on the 2nd Thursday, the 9th, because of the elections taking

place on May 2nd. Carol Anderson, manager of the County Museum Service will be there to tell us about gloving in Charlbury and surrounds.

Finally I have decided to put on an extra event on Thursday 6th June, to commemorate the centenary of the tragedy of the 'Beating the Bounds' walk, when three young people drowned in the Evenlode on the 29th May 1924. There will be various events during May to remember this occasion and I have asked Rob Stepney to lead a talk and arrange screening of a short film on the first Thursday in June so that we all commemorate this important event in Charlbury's history.

We hope you will join us for all these talks, encourage your friends to join the Society or join us for a specific evening and ideas and requests for topics are always very welcome.

Please do look at our new website from time to time to find out what is on, and what our plans are for next season.

Nikki Rycroft
www.charlburysociety.org.uk



CADS (Charlbury Amateur Dramatic Society)

A Play Read through for a light hearted play to be put on in May - 7.30pm at The Grove, Chapel Row, Chadlington, OX7 3NA.

AGM (Annual General Meeting) 21st March 7.30 pm Corner House. For anyone wishing to join, support or simply find out more info. Please bring subs £15 for Membership & £5 for 'Friends of CADS', members who have retired from acting.

Pantomime is being organised for November—please note *charlbury.info* for dates.. Fun for all.

Please Note:

Updates of CADS activities on Charlbury Website - Community - Arts - Charlbury Amateur Dramatic Society



The Wardens at work in Centenary Wood

If you have been walking up in Centenary Wood over the past couple of months, you may well have seen that the Cotswold Voluntary Wardens have been busy up there again. Following a number of years when there was very little management of the woodland, we are implementing a strategy that is designed to ensure that it remains a useful amenity to the local community well into the future. This involves several themes, including ongoing control of the blackthorn that would otherwise overrun most of the wood.

This autumn we have also begun the process of re-widening the Rides by selective pruning of the trees along their edges. Not only does this help spread wear and tear from walkers during the winter, but it will allow more light and rain to reach the ground. This in turn will stimulate more ground-based plant growth in the spring and summer – and more flowers means better habitat for butterflies, bees and other insects. If you walk through Dean Common, where we started this type of work in 2022, you will be able to see this improvement for yourself. Waste material from pruning has gone into dead hedges with the ecological benefits that this brings compared to burning it.

We are also actively managing the hazel copse within the wood, and after five years of steady progress we are now starting to supply material to the hedgelaying group of the Wychwood Forest Trust.

Even longer timescales are needed for management of the trees within the wood. At the beginning of 2023, we thinned out some of the oaks to give the remaining ones more space to grow, and this winter you will have seen that another area of dying ash trees has been felled. In the long term, the aim here is to compensate for the loss of trees to ash dieback by gradually restocking the wood with other species of native broadleaf trees.

For more information about the Wardens, what we do and how to join us, our contact details are in the Community Directory at the back of the Chronicle.

Bruce Crawford and Simon Walker

Come to relax, unwind, read the papers, catch up with friends and colleagues
and enjoy some delicious home-made cake along with
a steaming cup of Fair Trade tea or coffee

Font Cafe

St. Mary's Church, Charlbury
10am to 12 noon every Thursday

For smaller children we provide a play area with toys. Free Wi-Fi available

Probus goes online and on the up and up

2023 has been a positive year, particularly welcoming new women members and having a programme of excellent speakers. We meet for a monthly lunch currently at Witney Lakes but it is hoped soon to switch to the Bell in Charlbury. We were able to develop online bookings and payments, easing administration all-round.



We managed many events. February saw a trip to the Oxford Playhouse to see the musical 'An American in Paris. May was Coronation time with Probus members helping at a Barn Dance for the School and Corner House funds as well as the main event on Nine Acres. July saw our annual BBQ at the Bowls Club and River Trip to Stratford on Avon. September was the last of a series of Civil War walks, this time at Cropredy Bridge whereas the October highlight was the opportunity to meet Victoria Prentice KC

MP who could be our next MP with the constituency boundaries coming into force at the next General Election. There was also a trip to Bletchley Park.

We are not a fund-raising charity but in November we were happy to receive an excellent presentation from Charlbury's own Special Effects company, a generous donation was collected from members present which was then doubled from Probus funds. December's Christmas Lunch was popular and well received with Craig Ogden the world-renowned classical guitarist performing and talking about his career and of course guitars.

Several new members joined (we are now 50+) and were made welcome as you would be.

Call Chair Paul Jackson 07974 565 618 for more info.

<p>JUST ABOUTTO RETIRE</p> <p>JUST ARRIVED</p>	
	<p>JUST WANT..... TO MEET NEW FRIENDS</p>
<p>Probus Club of Charlbury</p>	<p style="text-align: center;">www.charlburyprobus.co.uk 07974 565618</p>



Charlbury Pre-School News

Spring 2024

This term at preschool the children have been learning about playing collaboratively which has included mark making in various different forms. A firm favourite is tyre marks in gloop.

The children are enjoying learning all about the Lunar new year, activities have included; making our own dragons using handprints, sharing stories about the festival, learning about the food & traditions and learning a new song during circle time.

Please join us for our valentines bake sale outside Pre-School on the 8th Feb 3-4pm. We are raising funds for an interactive whiteboard. Which will be a valuable learning asset for the preschool.

The spring agenda includes a much needed spruce up of our outdoor space with fresh planting areas and more plants for our sensory garden. In addition inside, Pre-school is also undergoing a transformation; the focus being enhancing the learning environment with new carpets, furniture, and a natural feel with plants and homely lamps! We are hoping to exchange a lot of our plastic toys with wooden toys and real everyday objects. Donations of wooden preloved toys are greatly received. Finally the new playdough station is proving popular with natural herbs being used for the children to chop and add. Not only does this smell lovely, it creates a sensory and educational element to learning.

Could you make a difference?

We are a charity and are always looking for volunteers, committee members and social media experts, just to mention a few. Do you have an idea for a fundraising event? Maybe you could organise or help publicise one? Would you like to provide a financial donation? If you would like to get involved don't hesitate to get in touch directly or visit our website.

How to get in touch

To find out more about our Pre-school or to talk to a member of the team, you can reach us through the following channels:
www.charlburypreschool.org.uk
admin@charlburypreschool.org.uk
01608 811200

We look forward to seeing many of you in the setting and at our next community events.

Josie Cope



All Together In Charlbury – a local helping hand

If you need:

- Transport to appointments or activities/visits
- Occasional household tasks/gardening
- Shopping
- Help with a form or letter or something else
- Someone to pop in for a chat

**Local ATIC volunteers are here to help
Call 01993 776277**

We are ready to spring into action

Whether you are looking for a new
tenant or a new home.

We can provide an honest and accurate valuation of
your property or help you search for your next home.

With over 50 years' experience of letting and
managing property in Oxfordshire, we are ready to
help you.



16 Oxford Street,
Woodstock, OX20 1TS

01993 627766
woodstock@finderskeepers.co.uk



Charlbury Library News

Spring is on it's way! We've got lots of books on gardening, cookery, craft, wellness for your mind and body and everything else that you might have promised yourself you'd get around to in the new year! We also refresh sections of our fiction stock weekly and there are always new titles to while away a few hours with so come and have a browse.

If we don't have a title in Charlbury, we can order in from other branches which only takes a few moments and costs £1.30 per item. Joining Oxfordshire Libraries means you can borrow from, and return to, any library within Oxfordshire for free (though some items like Audiobooks incur a small hire charge). You can join in person in any branch, or online at Oxfordshire Libraries, though you will need to go into a library to collect your library card once you've applied for it.

February will see the return of our regular Rhymetime sessions after a long break – hooray!!! Tina is our new Rhymetime volunteer and sessions will run weekly, term-time only, on Wednesdays from 2pm – 2.30pm. It's free of charge and open to pre-schoolers of any age, including babies, and carers must stay with their children. Tina will mix simple stories with nursery rhymes and songs and we've got plenty of puppets and musical instruments for the children to join in with. It's a fun half-hour with time afterwards for a chat or to get to school to pick up the older children.

Susie is our Digital Helper volunteer and she has a regular slot once a month on a

Monday morning in the library. You don't need to be a library customer but it's helpful if you've booked an appointment in advance (though it's worth dropping in on the off-chance she's free). Susie will be able to spend some one-to-one time in the library with anyone looking for help, either with specific queries or just a general confidence booster with digital technology. Look out for the adverts in the library and on the Charlbury.info website for how to sign up for the next session.

Please remember to bring your library card with you if you wish to use the self-service machine during unstaffed times. The self-service machine takes debit and credit card payments, but not cash. See you soon!

*Julie Ward
Library Manager
01608 811104*

charlbury.library@oxfordshire.gov.uk

CHRONICLE ADVERTS

Advertise your business in the **Charlbury Chronicle** and reach over 1600 residences.

To place an advert please ring
Graham Jowett on 01608 810666
or email:
adverts.chronicle@outlook.com



News from the Charlbury Patient Participation Group.

News from Charlbury Medical Centre (CMC)

COVID. Patients should not attend the surgery while infected with COVID, if in doubt please take a test. Test kits are available from Averose pharmacy or the Co-op. It is important that staff at CMC are not exposed unnecessarily to germs, so if you have a cough or cold, please wear a mask.

Vaccinations.

Measles An increase in cases of measles is once again being reported. If your child or any young adult, especially those who are thinking of starting a family, has missed out on the MMR vaccine do contact the surgery to arrange an appointment. Measles can be life-threatening and also cause long term health damage.

Shingles vaccine is available to everyone aged 70-79 and those who had their 65th birthday on or after 1st September 2023. The main concern of contracting shingles is the risk of developing post-herpetic neuralgia, (long term skin pain along the nerve associated with shingles infection), which affects 1 in 5 people who have had shingles. The risk increases with age and the pain can be very debilitating.

Pneumonia Pneumococcal vaccine is available for babies, people over 65, and for those who are at high risk of becoming seriously ill.

Current Staffing Up-to date changes in staffing should be found on the CMC website. In January two new members of the admin team have been employed. (**Marina** as a receptionist and **Teresa** in an administrative role). In discussion with CMC managers we continue to encourage front line staff to wear visible name badges and introduce themselves on the phone.

Sadly **Dr. Khan** has now left the Practice.

Megan Saunders has recently been appointed as the Primary **Care Well-Being Worker** based at CMC. This service is provided by the charity **Mind**. The service provides support to patients who are suffering from mental health or other social or lifestyle issues that impact on their well-being. The support aims to encourage and enable people to link with local support services, and develop tools to increase their ability to manage their own well-being. Megan cannot provide therapy or counselling but can direct patients to services that can. Sessions will last up to 30 minutes and patients can have up to 6 sessions. These may be video-call, telephone or face to face.

Patients can self-refer either through the practice or by emailing nwprimarycarewellbeing@oxfordshiremind.org.uk with their name, DOB and GP practice.

Waiting Times. The average waiting time for the telephone to be answered is now 3 minutes. This will be longer during the very busy time between 8 am and 10:30 am when urgent same day appointment calls are taken. If you do not require a same day appointment please avoid this time.

The average waiting time for a routine appointment is now 2-3 weeks.

Both these waiting times have reduced considerably since the appointment of **Ben**, (advanced para- medic), who triages calls and has consultations with patients.

Website. Information about CMC and the Patient Participation Group can be accessed on the CMC website. Patients are also encouraged to give feedback regarding their experiences (both positive and negative) on the website.

www.thecharlburymedicalcentre.nhs.uk



News from the CPPG

By the time this has been delivered we hope to have had an event at the Farmers' Market to promote CPPG. We were deterred in our previous attempt at the December Farmer's market due to appalling weather which was braved by many buying Christmas vegetables and cheeses but we felt few would linger in the rain and wind to discuss the Patient Group!

We would very much like to encourage more patients to join the virtual group so that comments about about CMC can be fed back to the Steering Committee. Comments are then fed back to one of the three practice managers where appropriate, and over the years many changes have been made as a result. Patients can of course also liaise directly with CMC via the website or in person.

To join the Charlbury Patient Group email charlburypatientgroup@gmail.com. (Please note change of email address).

In November we welcomed **Alan Jenkins** onto the Steering Committee. He is hoping to establish a men's group whereby men's health concerns can be raised. This may be especially important as CMC no longer has a male GP.

To contact Alan, e-mail: charlburypatientgroup@gmail.com

Deborah Hofman

CHRONICLE ADVERTS

Advertise your business in the **Charlbury Chronicle** and reach over 1600 residences.

To place an advert please ring Graham Jowett on 01608 810666 or email: adverts.chronicle@outlook.com



We were delighted to mark our official 90th anniversary last November.

Thank you to all those who came and celebrated with us, including our District Commissioner and past members and friends of the group. The Scouts had completed 'Dragons Den' style planning in the preceding weeks and, thanks to the support of many Charlbury businesses and organisations, they did some very successful fundraising for their own activities.

We had a display of photos and memorabilia, courtesy of the Charlbury Museum,

although records show that Scouts existed in Charlbury well before 1933, including at the time of the Beating the Bounds tragedy in 1924. We shall be involved in the commemoration of this sad event alongside other organisations in the town in May.

On a happier note, we are looking forward to spring and summer activities, with Beavers going on an Easter Egg Hunt, Cubs taking part in the North Leigh hike and Scouts planning an overnight camp, before all sections join in with the Family Camp in July.

The Scout Hut Management Committee has been formed, and we are grateful to those who have come forward to join this, as well as those who have generously donated to the repair and refurbishment of the Hut. We need people to fill the roles of Health and Safety Lead, Maintenance Lead and Grants and Fundraising Lead. We will also need a Bookings Contact, as we hope the Hut will soon be available for booking by groups/classes. Please do get in touch at

1stcharlburyexec@gmail.com if you can help in any way.

Finally, our next event will be an Easter Trail, on Saturday 23 March – please look out for more info and posters in early March.

Cheryl Horsey, Group Scout Leader

Charlbury Community Centre News



We're delighted to report that the centre has not only continued to be a hive of buzzing activity during the dark winter months, but that people have continued to come up with new and different events and sessions to offer you.

We get quite a few out-of-town visitors popping in for a cake and coffee on their amble around Charlbury, to ask questions or get advice on walking routes. While here, they tend to look around the centre (with wide eyes), and the comment we most often hear is how lucky we are to have such an incredible facility with so much going on – and **what a great community we must have to make it all work**. We couldn't agree more.

Our ultimate and ongoing aim is to have something for everyone in our community here, and the more people that come in and get involved, the more vibrant and varied it will be. See below for a snapshot of what's been happening recently and what's new and ongoing – you might see something that appeals!

Finally, one of the initiatives that we are currently very interested in, together with other groups in Charlbury, is to think about and develop what we can offer for the young people of our community. Younger children here tend to be quite involved in activities outside school, but once they reach their teenage years, this tends to drop off – and we'd love to improve that. To that end, **we are looking for a Youth Ambassador** to help us co-ordinate ideas, create interesting opportunities and provide engaging sessions for teens. **This is a paid position with flexible hours**. In addition to the ambassador role, we'd love to hear from anyone who would like to engage with this process – young or old!! Please contact Chris Potts via our centre email info@charlburycommunitycentre.org.uk if you have any queries or want to express interest.

Recent Events:

Sushi pop-up fundraiser

What a special evening! On Sunday 4th February, we hosted yet another great collaborative fundraiser with Charlbury Pre-School. Co-ordinated by Mizue Tams, and starring chef Tadashi Moriyama, anyone who turned up was treated not only to a fantastic array of freshly prepared and exquisitely made sushi, but got to watch the chef in action. All proceeds were split between the pre-school and the Japanese earthquake victim's fund. Special mention must be made of Mizue, Ben and Tadashi's outfits which were worth coming out for. I'm sure there will be appetite for more of these – don't miss out next time!

Art history series

Monday afternoons during the darkest weeks were brightened up by this wonderful series of informal Art History classes given by local art historian and author Juliet Heslewood. The series focused on Women Artists, and our TG Room was packed week on week with interested attendees. It proved so popular that the initially planned series of 6 classes in January and February was extended with a further three offered in March.

Winter Kids' Runarounds

And Friday afternoons and Sunday mornings saw our Sports Hall truly come alive with the sounds of delighted and excited shrieking little ones. It's amazing how much fun can be had with just a few mats, balls and hoops and the space to run and play freely. The last Friday before term re-started in January, there were over 60 children in attendance, ranging in age from crawling and curious babies to active primary school children. There were as many parents and grandparents there as children, and it really feels like a *community* centre when these are going on. Also thank you to the parents and children who help out setting it all up and packing away.

Half-term Kids' Art Workshops

Also for the lucky children of our community, Polly Blok's wonderful art sessions have become a popular and regular fixture of our half-term offerings. February half-term saw another chance for kids to come in out of the drizzle to get creative. The buzz of happy voices and industry are great to hear, and the finished pieces of art are great to see!

New and ongoing sessions Toddler Gym and Songbirds

While the Runarounds take a break for a while, toddlers and young children (recommended ages 2-5) will still be able to have a great time with the tents, tunnels, balls and other soft play equipment at Jason's Toddler Gym. Held in the TG Room every Wednesday morning during term-time from 11.15-12. Just turn up! And if you fancy a sing-song with your little one, come earlier to attend local musician Jenny Mahler's Songbirds session. Same place, at 10.15. Get in touch with Jenny to book: jennymahlermusic@gmail.com

Fitness for Seniors

This hugely popular class is aimed at improving your strength, balance and flexibility – crucially important as we age. This class caters to people with all levels of fitness, and you will get a warm welcome from instructor Louise and the group. Get in touch with any queries or to book a place: louisebarnespt@gmail.com

NEW Adult Basketball Club

While Charlie's consistently well-attended and much-loved youth basketball session is still going strong, it became clear that there was appetite for another basketball club for the slightly more mature player! Andy Benka, recently moved to Charlbury and keen to get involved is leading the sessions, so please get in touch if interested benkaandy@gmail.com – or just turn up! Sessions are for ages 16+, no previous basketballing experience necessary – atmosphere is very laid back. In the Sports Hall every Friday at 4.30-5.30. Perfect to kick off your Friday evening and feel like you deserve that pint or pizza!

NEW Social Netball League

And if you like nets but not basketball, and are looking for something active but social, why not consider netball? This group is perfect for those who haven't played since school, but no experience necessary either, and all ages welcome. It's a fun, friendly and social session - plus you'll get a great workout! In the Sports Hall every Wednesday 8-10. Please get in touch with Ellie here for questions or to book: <https://www.youplaynetball.co.uk/league/charlbury-community-centre/charlbury-wednesday>

If you have any ideas for either collaborations between the community centre and any other local group you're involved in, or you want to explore the idea of offering a class in our TG Room or a session in our Sports Hall, please let us know – we're very open to trying new things and encouraging even more people to benefit from the centre. Please get in touch with Daniela Jenkins: info@charburycommunitycentre.org.uk

For information about any of our sports sessions, exercise classes, weekly social meetings and to keep up-to-date, please visit our website –

www.charlburycommunitycentre.org

You can also follow us on **Instagram**: [charlbury.communitycentre](https://www.instagram.com/charlbury.communitycentre) or on

Facebook:

@Charlburycommunitycentre – give us a like to increase our reach!

Finally, **a huge shout out to Edmund Blok** for coming in to photograph so many of our sessions and events – and what magnificent photos! If you haven't been in recently, a selection of his amazing work showcasing the variety and vibrancy of what happens here is on display on the screen in reception. Come have a look.

And while you're here, check out what's going on, have a cuppa and pick up a *What's On* leaflet – these are updated monthly and there might just be something there waiting for you.

*Catherine Ball
Trustee, The Thomas Gifford Trust*

Churches Together Dates

Monday 26 February, 7.30pm

Lent talk in the Friends Meeting House, 'Monitoring human rights in Palestine'

Friday 1 March at 11am

World Day of Prayer service in the Methodist Church

Monday 4 March, 7.30pm

Lent talk in the Friends Meeting House, 'Non-violent direct action in a climate crisis'

Friday 8 March, 12 to 1.30pm

Lent lunch in the Baptist Church

Monday 11 March, 7.30pm

Lent talk in the Friends Meeting House, 'Building a legacy of love in Bangladesh'

Friday 15 March, 12 to 1.30pm

Lent lunch in St Mary's Parish Church

Monday 18 March, 7.30pm

Lent talk in the Friends Meeting House, 'Inheriting the earth - a passion for nature and the environment'

Good Friday 29 March

Walking the Way of the Cross - meet at the Fountain on the Playing Close at 10am for a meditative walk with readings and hymns at each of the Charlbury churches finishing at the Methodist Church for refreshments.

12 to 18 May - Christian Aid Week with a united service in St Mary's on Sunday 12 May at 9.45am

St Mary's Easter Services

Rev Fergus Butler-Gallie says: *Lent and Easter are perhaps my favourite time of year. They speak eternal truths about the rhythms of life and death, they tell us about the reality of our own failings and also speak of our deep potential to be transformed into something more. They are deep and holy times of the year, coming, appropriately just as our seasons change. Every year, I feel as if I know myself a little better as Easter comes round, and have a little more of a sense of the closeness of God. They are the most marvellous journey: do come and join us as we walk on them this year.*

Messy Church Sunday 3rd March 3pm – for families with preschool and primary school aged children. Please book your places at parishoffice@charlburychurch.uk

Palm Sunday Choral Evensong Sunday 24th March 6pm. All welcome.

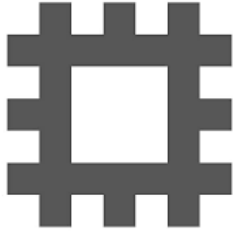
Easter:

Monday 25th, Tuesday 26th, Wednesday 27th March 6pm Holy week compline

Maundy Thursday 28th March 7pm Holy Communion

Good Friday 29th March 10am Messy Church, 12.15pm Litany and Meditation at Shorthampton, 2pm Hour at the Cross

Easter Day 8am St Marys, 9.45am St Marys, 11am All Saints Shorthampton



North Leigh Roman Villa

Set within a peaceful landscape on the banks of the River Evenlode, North Leigh Roman Villa is considered to be one of the largest villas in Roman Britain with a history of occupation spanning 5 centuries. At its most extensive in the early 4th century AD it included three bath suites, 16 mosaic floors and 11 rooms with under-floor heating.

Today visitors can imagine the villa's former richness as they walk through the rectangular footprint of its walls – but the mosaic house hides the real gem of a near complete mosaic floor. The mosaics form the floor of villa's winter dining room and, as the only example in Oxfordshire still found in their original location, they give a powerful sense of the Villa's original opulence.

The mosaics returned to public opening in September 2019, for the first time in almost 30 years. Thanks to the efforts of North Leigh Roman Villa Volunteers [NLRVV], a local group working with English Heritage. Since then more than 6,750 visitors have seen the mosaics in spite of covid restrictions in 2020 and 2021.

The efforts of NLRVV's two dozen volunteers were recognised by a Heritage Alliance Commendation Award for volunteering in 2020. In 2021 the Blenheim Bursary fund awarded the group £5,000 to support renovation of the site's Custodian's Cottage. Visitor donations made at the site now exceed £2,850.

At the start of 2022 it was announced that North Leigh was one of just 4 English Heritage sites to be supported by a £1m Michael Bishop Foundation donation. The work funded by this generous donation will run in 3 phases throughout 2024.

As well as North Leigh Roman Villa, **English Heritage** cares for over 400 historic buildings, monuments and sites - from world-famous prehistoric sites to grand medieval castles, from Roman forts on the edge of the empire to a Cold War bunker. Through these, it brings the story of England to life for over 10 million people each year.

Registered charity no. 1140351. www.english-heritage.org.uk



Charlbury Church Services



Charlbury Baptist Church, Dyer's Hill

Contact: Secretary (01608 810107)

Sundays 10.30am.

Communion on the first Sunday of each month

Tuesdays at 7.30pm Join us on zoom for midweek study/discussion

Our Garden. A place to sit quietly at any time.

Join us Friday April 19th at 7.30pm for our Healing Service

Live-streamed services coming soon!



St Mary's C of E Church, Church Street

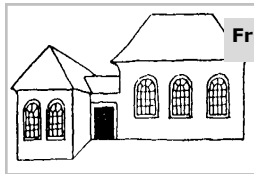
St Mary's Church, Charlbury and All Saints Shorthampton

Full details of all church services are available in the

Leaflet or in the Church porch

Parish Office (01608 810230)

www.stmaryscharlbury.co.uk



Friends' Meeting House, Market Street

Meeting for Worship at the Friends Meeting House

Sunday mornings 10.30am

For further details contact Sue Terry (01608 811033)

email: sueeterry@btinternet.com)

You are very welcome to join us



Methodist Chapel, Fishers Lane

Sunday services at 10.30am

Further information from Gill Grason (01608 810154)



St Teresa's R.C. Church, Fishers Lane

Wednesday Mass: 9.15 am (followed by Adoration/ Benediction) except in Lent when Stations of the Cross)

Friday Mass: 9.15 am

Sunday: 9.15 am Parish Mass.

Priest. Fr Clive Dytor, The Old Drapery, Church Street, Charlbury. Tel: 07484 158642.

Churches Together in Charlbury

Last year, in our Lent talks on the theme 'Good Neighbours', speakers from local charities told us about their work to support people struggling with day to day living. This year we are going to hear from some of our own neighbours who have devoted themselves as individuals or part of a group to tackling some of the biggest issues in the world today – prejudice and discrimination, poverty and lack of opportunity, the climate and biodiversity crisis and the difficulty of taking effective action to make our voices and concerns heard. Many of these problems are interlinked and experienced both locally and globally. We will be asking all our speakers 'Why are you doing this?'

We will hear from Ian Cave about taking part in the Quaker led Ecumenical Accompaniment Programme in Palestine and Israel. Angela Gwatkin and Brigid Avison will discuss their experiences of non-violent direct action in relation to the climate crisis. Steve Page and Andy Faulkner will tell us about living and working to create educational opportunities in a rural area through their support for the charity Life for Bangladesh. Anne Miller will share her enthusiasm for studying and advocating for our natural environment. Talks will be held on Monday evenings at 7.30pm in the Friends Meeting House between 26 February and 18 March.

On the first Friday in Lent, 1 March, at 11am we will be holding a service for the

World Day of Prayer in the Methodist Church. The service was prepared by women in Palestine and will help us to think and pray about the tragic situation in the Holy Land. On other Fridays in Lent we will be hosting a soup, bread and cheese lunch in one of the Charlbury churches, when we can meet our neighbours and enjoy each other's company. Lunches are free but we will be inviting donations to support Christian Aid's Middle East Crisis Appeal.

On Good Friday, 29 March, we will be 'Walking the Way of the Cross', meeting by the fountain on the Playing Close at 10am, visiting all five Charlbury churches, with meditative readings and hymns at each stop, and finishing at the Methodist Church for tea or coffee and hot cross buns. And we will be looking forward to Christian Aid Week in May when we will be appealing for donations to alleviate some of the world problems we have been learning and talking about in Lent. Envelopes for donations will be delivered round the houses to be returned to Cornerstone in the Corner House or your local church.

Everyone is welcome at all these events. Dates and venues are listed in the Events page of Charlbury.info and in local churches.

Rosalind Scott – Secretary to Churches Together in Charlbury



Extracts from the ATIC Annual Report 2022-23

The following are key points from our Annual Report for 2022-23, which was presented at our AGM held in November 2023.

We provided the following direct help during the year

- Transport: around 350 journeys – that's an average of 6-7 per week
- Shopping: 3 clients
- Visiting/befriending: 7 clients

Don't forget that we also aim to offer the following help, if required:

- Occasional household/simple DIY tasks such as changing a light bulb
- Occasional gardening
- Help with a form or letter or accessing information on the internet or otherwise

We co-operated with the Town Council, Cornerstone and the Community Centre to produce a flyer to go to every household telling residents about support available to help them stay warm, have access to food and to avoid isolation during what might be difficult Winter. Our transport and befriending services were included.

ATIC was one of over 20 local organisations who had displays in the Memorial Hall on *Big Help Out Monday* afternoon, 8 May 2023. *The Big Help Out Day* was promoted to encourage people to try volunteering for themselves and to join in the work being done by the many local organisations in support of their communities. ATIC benefitted from expressions of interest from people, who have now joined us as volunteers – thank you.

We have been extremely grateful to receive annual grants towards our running costs from the Town Council and

from the Long Hedge and Ticknell Parish Stock charity

We are indebted to Volunteer Link-Up for acting as our call-centre; receiving requests for help from local residents and then matching them up with willing volunteers. VLU also provides ongoing monitoring support for our team of volunteers. We have the benefit of VLU's professional staff team's time and experience provided free of charge and the quality and friendliness of the support they provide is much appreciated by us and our clients.

We were pleased to make a donation to VLU in March 2023 in recognition of their support and we will aim to repeat this gesture each year, so long as we have resources available.

We are so grateful to all the members of our small volunteer team for enabling us to make a contribution to Charlbury's already rich pattern of informal good-neighbourliness which goes on unseen day by day all around the town. We currently have 15 members of the volunteer team with 2 more now "in the pipeline". As often happens, they are all busy people with involvement in other local groups and activities but somehow they find time to be the backbone of ATIC's much valued service.

During the year we have tried to get the word out about our services and the need for more volunteers in the following ways:

- Regular articles and adverts in the "Charlbury Chronicle"
- Posts on the Charlbury website
- Appearance at the annual Street Fair
- Information in key locations in the town



After all these efforts, we guess that word-of-mouth is still the best way of spreading our message to new potential clients, so please bear this in mind when you are out and about in the town and meet someone who you think might benefit from one of our services.

We have been pleased to receive excellent back-up from Volunteer Link-Up's Good Neighbour Scheme support service. It has been helpful to be able to attend quarterly GNS networking meetings organised by Volunteer Link-Up, which enable us to keep in touch and share information with other GNSs and to learn about information and practical help available from a range of statutory and voluntary agencies.

Finally, we are pleased with our name, which aims to sum up the principles behind our scheme. This is a *mutual support* scheme for Charlbury residents of all ages and circumstances, who, for whatever reason, find that they are unable to carry out a task themselves and who have no family or friends available to help. We have all been – or are all likely to be at some time in the future – in a position where we would welcome some practical help or moral support of the kind available through ATIC.

ATIC volunteers gain as much from involvement in the scheme as our service users. They get the opportunity to meet people from parts of the town they may not have known or visited before and to have some fascinating conversations along the way.

Meryl Smith



- Scarification
- Hollow Tining
- Lawn Aeration
- Over Seeding
- Top-Dressing
- Removal Weeds
- Moss Control

NO CONTRACT

Contact Steve

01865 331501/
07894 983801

Email:



Charlbury Town Council News

Contact: Lisa Wilkinson, Town Clerk at
charlburytownclerk@gmail.com or 07311 259412.
c/o Corner House, Market Street, Charlbury, OX7 3PN.
www.charlbury-tc.gov.uk

Annual Town Meeting 15th March

Don't miss this year's **Annual Town Meeting** on **Friday 15th March** at 7 p.m. in the Memorial Hall. The theme this year is 'Young and Old' and there will be exhibits from the council and local organisations, as well as a guest speaker. Come and hear all about what the council has been up to and ask us anything you want to over a glass of locally-sourced wine (or a soft drink) and cheese. Don't miss our Honoured Citizens Award presentations!

Town Council elections 2nd May

All 12 seats on Charlbury Town Council are up for grabs in the local elections on Thursday 2nd May! The current Town Council has been in place for almost three years, a shorter term than the usual four. This is because the council before the current one sat for five years because the pandemic prevented elections taking place in 2020.

At the election in May 2021 there were 18 candidates competing for 12 seats, and – almost unprecedentedly – seven new councillors won seats. That surge in interest to stand for election was a clear illustration of the level of engagement with local issues within the community, and strengthened the council's democratic mandate. We very much hope to see that level of interest again this time round.

Since May 2021, the Town Council has commenced on a programme of improving conditions for walkers and cyclists around the town, devising a scheme to help Charlburians make their homes warmer and greener, taking greater care of the natural spaces in and around the town, helping to set up and run Charlbury Market – and much more besides.

If you're pleased with the work the council has been doing and want to join a thriving and successful team, or if you think the opposite and want to change everything we're doing, this is your chance to get involved and make a difference to the town you love! The core tasks are not too onerous, lots of advice is given where required, but no experience is needed. If you're thinking of becoming a councillor but would like to find out more, why not talk to the Town Clerk, Lisa Wilkinson or to one of the sitting councillors?

Vote on 2nd May!

Town Council elections are being held on the same day as the election for the Police and Crime Commissioner and one District Council seat. Remember that by law you now have to bring ID with you to be able to vote: see <https://www.westoxon.gov.uk/about-the-council/elections-and-voting/voter-id-what-you-need-to-do/>.

The deadline for elector registration is 16th April. The deadline for applications for postal votes is 17th April and the deadline for applications for proxy votes is 24th April. All of the information you need is available at <https://www.westoxon.gov.uk/about-the-council/elections-and-voting/current-and-future-elections/>.

Come and say hello

If you can't wait until the Annual Town Meeting, you can go along to the Community Centre on Wednesdays 9.30–11.30 every week to talk to our very knowledgeable Town Clerk, Lisa Wilkinson.

Also, by popular demand (!), we are continuing our programme of Councillor surgeries. This is an opportunity to talk



Charlbury Town Council News

to councillors about any issues that may be concerning you regarding the town – parking, for example. Look out for notices on our website, on social media, and posters around the town.

Annual Parish Boundary Walk 5th May

The Annual Parish Boundary Walk will take place on Rogation Sunday, 5th May. This is a chance to walk the boundary along paths not normally open to the public, by kind permission of the landowners. It starts at 10am at the Boundary Oak – the old oak tree at the top of Forest Road (B4437 to Burford), nearly a mile past the railway station. The walk is about 11 miles in total and takes up to 6 hours allowing for a break for lunch at Model Farm, Ditchley. We are very grateful to Rob and Maxine Hobill for once again offering the use of their garden as the lunch venue. If you don't want to do the whole walk, you can leave or join us at the lunch stop if you wish. We need volunteers for stewarding and chauffeuring on the day – if you can help, please contact the Town Clerk.

The occasion will be particularly poignant this year as it marks the 100th anniversary of the tragedy which occurred on the Beating the Bounds walk in 1924 when three children drowned crossing the river. In commemoration of this sad event there will be a short ceremony and refreshments on the Mill Field at 4pm after the Boundary Walk has finished.

Charlbury Museum will also be commemorating the tragedy with a special exhibition and the Charlbury Society is also planning to hold a commemorative event in early June. You can find out more about these events elsewhere in this edition of the Chronicle.

Car park facelift helps pollinators

A new community 'Pollinator Patch' has been created outside Charlbury Bowls Club to provide a nectar-rich resource for bees and other pollinators, thanks to support from the Trust for Oxfordshire's Environment (TOE), Charlbury Garden Society, and local ecologist Katherine Holmes (Rediscover Nature) alongside the Town Council and local volunteers. In autumn 2023, pollinator-friendly plants such as rosemary and echinops were planted to provide a food resource and safe-haven for pollinating insects. The new planting will form an attractive focal point as it grows this spring, replacing a previously bare expanse of soil. It's been designed both for the enjoyment of visitors and the benefit of pollinators, which are suffering from habitat loss. Plant species with attractive flowers that bloom over a long season have been selected to provide insects with food throughout the year. Many plants also have stems and leaves that persist through the winter, providing shelter for invertebrates.

Council tax

The Town Council's precept (the amount of your council tax that is allocated specifically to the Town Council) is increasing by 11.45%. This equates to £10.79 per year for a Band D household. This rise has had to be implemented for two reasons: 1) following surveys on Nine Acres Recreation Ground, the pitches need considerable renovation and maintenance work. £10,000 per year is required to build up a layer of soil above the stone to make the pitches safe to play on. 2) The external auditors have advised that the level of reserves for the Town Council are too low. They have requested that the council starts to build up its reserves. Therefore, £10,861 has been allocated to start this process.



Charlbury Town Council News

Watch out, there are speeders about

Thanks to the support of County Cllr Liz Leffman's Councillor Priority Fund, the Town Council has acquired a new all-singing, all-dancing speed indicator device (SID), pictured.

This SID will give us reliable data on traffic speeds which we can use to plan a way forward on speeding around the town, working with Oxfordshire County Council. It joins a lower-tech SID that you will have seen around town over the past year or two.

Can you believe that from mid-October to mid-December, 69% of the 26,521 vehicles that passed Charlbury School and Charlbury Pre-School were breaking the speed limit? In January, 59% of vehicles going downhill on Nine Acres Lane were breaking the speed limit. The SIDs have recorded disturbingly high speeds in Charlbury over the past few months, including a few doing more than twice the legal limit.

To combat this scourge, the new Charlbury Speedwatch Co-ordinator is looking for volunteers to help run Speedwatch sessions using police-approved speedgun technology to clock individual speeders, with police follow-up. If you would like to help, please contact the Town Clerk or email the Speedwatch Co-ordinator at cswcharlbury@outlook.com.

Parking

The Town Council's Traffic Committee hosted a popular and spirited public meeting in January aiming to hear locals' concerns about parking in the centre of town, and to consider solutions to some of the town's parking woes.

For decades, in council surveys and anecdotally, parking has featured as residents' number 1 gripe about the town

and fixing parking their number 1 priority. Pressures are getting worse by the month and so a Town Council Working party has been set up to look at effective long-term solutions that the County Council can put in place.

Town centre parking problems have a variety of causes. More residents own cars, though this is only problematic in the town centre where there's little off-street parking. Some rail users seek to avoid the £4.70 daily car parking charge at the station by parking in nearby streets. Employees at local businesses are parking on the street in much greater numbers. And outside visitors to businesses, especially at weekends, cause severe parking problems in the Church St area. But, with the exception of people parking on double yellow lines, no one is breaking any rules by parking in town-centre streets.

So what can we do? To reduce demand for car parking, the Town Council is encouraging more walking and cycling into town amongst local drivers (those that can). This spring, at the Town Council's behest, the County Council is going to be consulting on a wide range of measures to encourage walking and cycling in town. Examples of the kind of infrastructure we're talking about is the pedestrian crossing at the top of Crawborough, which will be in place by the time you read this article.

We have attempted to reduce car ownership locally by getting behind the HiyaCar car sharing scheme. But, despite a high percentage of respondents to a council survey saying they would join an EV car-sharing scheme, take-up of the HiyaCar car-sharing scheme has been poor. We think it's because the price of rentals is too high and we are working with HiyaCar to get a special deal for OX7 residents meaning you can rent HiyaCar



Charlbury Town Council News

vehicles for much less. Watch this space. The Town Council owns an e-bike which residents can borrow for periods of up to two weeks, the reason being that most people who experience an e-bike and see how easily it fits into their lifestyle, end up acquiring their own. One more e-bike = one less car on the roads and parking in town. See <https://charlbury-tc.gov.uk/borrow-the-council-e-bike/> or contact the Clerk.

We're also doing all we can to promote the use of local bus services: the adage "use it or lose it" has never been truer. Did you know that you can check the **local bus routes and times** at oxontime.com and bustimes.org? For more info, visit <https://charlbury-tc.gov.uk/buses/>.

We're talking to local businesses to a) find ways for them to thrive with fewer car visitors ("Visit Charlbury by Train!" etc.) and b) find spaces for their dozens of employees to park. We need to make better use of existing car parking facilities around town to facilitate office/weekday parking for workers, as well as evening/weekend parking for visitors, in existing car parks which are under used at certain times of the day. And we are in talks with the County Council about whether or not a residents' parking scheme could work in the centre of town, to make it easier for residents and visitors to town centre facilities to park.

Charlbury alerts

Join our **email alert system** to be notified about what's happening at Charlbury Town Council. To be added to the Charlbury Alert System, we need your consent. Please fill in your details at charlbury-tc.gov.uk/welcome-to-charlbury-alerts/. We look forward to keeping you up to date!

Cllr James Styring



Averose Pharmacy

Your local community Pharmacy for you & your family

- ✔ NHS and private prescriptions
- ✔ Free delivery service to your door
- ✔ Text message service
- ✔ Travel vaccination service
- ✔ Blood pressure checks
- ✔ Flu vaccination service
- ✔ Weight loss service

PRIVATE WALK
IN SERVICE FOR
Back Pain, Acne,
Skin Care, Cystitis
and others

Visit our website www.averosepharmacy.co.uk

Call 01608 810315

Address: Averose Pharmacy,
Market Street, Charlbury, OX7 3PL



OPENING HOURS:

Mon-Fri: 9am-6pm

Sat: 9am-1pm

Sun: Closed

CHARLBURY FARMERS' MARKET on the Playing Close between 9am and 1pm on Saturday, March 9th

Charlbury Farmers' Market is administered by Thames Valley Farmers' Market Co-operative Ltd. and organised by Geoff & Janet Burroughs.

Any queries, please contact Geoff or Janet on the contact details below.

Email: burroughs871@btinternet.com
tel: 07969 208518, 01608 810260

From County & District Councillor Liz Leffman

01608 810153, 07741 073088 liz.leffman@oxfordshire.gov.uk

As I write, the new Zebra crossing is being installed on The Slade, and by the time you read this it will be well established. There were some concerns expressed by Charlbury residents before the work began about the impact that the work would have on traffic through the town, but I think that has been well managed and the use of traffic lights during the evenings and at weekends has really helped.

It was great to see the station building reopened in the middle of February, and I have recently had some meetings with GWR about Charlbury station and the North Cotswold Line. There are a number of problems to resolve. First of all, parking at the station is not adequate for the number of train users who come from outside the town. I have been contacted by people from some of the nearby villages who struggle to find parking spaces if they arrive at the station after 8.30. That leads to some people having to park in the town, which reduces parking for Charlbury residents.

Secondly, the reliability of the trains is very poor as we all know and this is down to the single track along much of the line. Oxfordshire County Council is working with other councils along the

line to lobby support from our MPs, including Robert Courts, to make the case to the Department for Transport for doubling the line along its entire length. I know that I have said over many years that this is my aim but at last I think we are getting some real support for the plan. I am working closely with the other council leaders along the line in Gloucestershire, Warwickshire, Worcestershire and Herefordshire. I cannot promise that this will happen in my lifetime but we are doing our best!

Oxfordshire will, I hope, have agreed a budget by the time the Chronicle is published. As a minority administration we are dependent on the support of other political parties to get our budget agreed. If the budget is more or less the one that we have proposed, then we will see extra money allocated to children's services, particularly to children with special educational needs and disabilities, and also to adult social care. I have been in discussion with the Chair of Governors at Charlbury Primary School about how we can support children with special needs locally and I hope that we can pilot something very special in our own local school.

Liz.leffman@oxfordshire.gov.uk

Coffee Break answers

Coffee Break page answers:
The missing four are: Arizona, Nevada, New Jersey and West Virginia.
If you take the first and last letters of the first word in each line, and those following 'and', you find the abbreviations for 46 of the states of the USA, plus the District of Columbia. That makes 47. So:
Arrival and departure: AL (Alabama) and DE (Delaware)
Wind: WY (Wyoming)
Cyanobacteria: CA (California)
right down to:
OK (Oklahoma), which is a bit of cheat, but I couldn't think of another word beginning in O



Folk Dance workshop in Charlbury
Sat 9th March 2—4.30 pm
Memorial Hall

Wychwayz Border Morris and Stonesfield Folk Dance Club invite you to join us for an afternoon of Morris dancing and English Country Dancing with live music. We'll teach you some of our easier dances – no previous experience required! There will be an interval with tea and cakes. Free entry!

Who are we?

You've probably seen Wychwayz Border Morris dancing out around Charlbury with our rag jackets and painted faces. We practice all year round and enjoy dancing out at local events, festivals and pubs. We practice in the Scout Hut on Tuesday evenings from 7.45 to 8.45. New dancers and musicians (including learners) always welcome. For details contact Liz on 01608 810657 or 07800 744787.

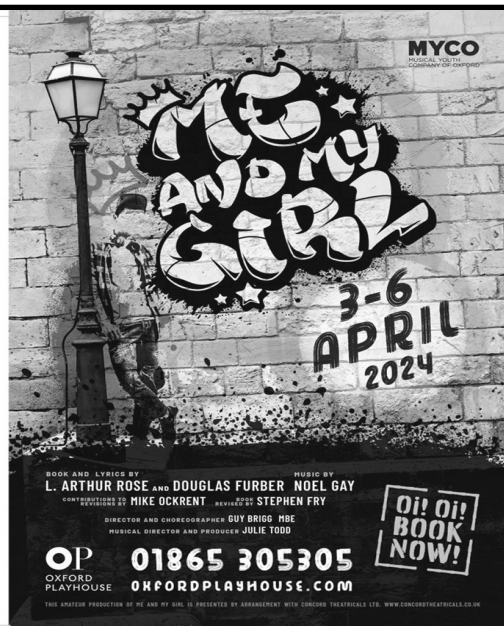
Stonesfield Folk Dance Club have been going for over 50 years and meet on Wednesday evenings from 7.45 to 10.00 in the Stonesfield Village Hall. Do come along and give it a go. Expect a flavour of lively or elegant dances with music to match, written and published from the 17th century to the present giving us an astonishing variety and wealth of repertoire which is still expanding and much enjoyed today. For more details contact Stewart Nicholls on 01295 730271 or just turn up.

Come and see the talented young people of MYCO (The Musical Youth Company of Oxford) in their main 2024 show

Me And My Girl
The Oxford Playhouse
April 3rd to April 6th

'The Happiest of Musicals'

Tickets from the Oxford Playhouse 01865 305305 or oxfordplayhouse.com



Come to Combe Mill

www.combemill.org



**Come to our steaming events with all machinery running
Market stalls to explore and refreshments galore from our
BBQ and tea room**

**We also welcome bookings from local groups and schools
You could even book the tea room for your next family party**

Steaming Events 2024

Sunday		Event
March	17	Science at the Mill + Spring Market
April	21	Military Vehicles
May*	12	National Mills Weekend (not in steam)
May	19	Mercedes-Benz Day
June	16	Environment Day
July	21	Wildlife by the Evenlode
August	18	Models and Collections
September	15	Crafts and Skills
October	20	Wood Crafts + Autumn Market
December	01	Christmas Fayre (not in steam)



**Winner of Engineering
Heritage Award**

As featured on television

Steaming events 10.30am - 5.00pm

See website for admission prices

**The Mill is also open but not in steam (10.30-16.30 hrs)
every Wednesday from 20 March until the end of October**

**COMBE MILL, BLENHEIM PALACE
SAWMILLS, COMBE, OXON,
OX29 8ET**

Our First `IN STEAM EVENT` at Combe Mill is on 17th March 2024 Themed `Science at the Mill`

17th March 2024, enjoy our `In Steam` Themed event `Science at the Mill` browse Gift Shop, Tombola, BBQ and Tea Room also open. Accompanied by Spring Market Stalls.

21st April 2024 `In Steam` Themed event `Military Vehicles`. All types of Military Vehicle will be invited, come along and enjoy the day. Gift Shop, Tombola, BBQ and Tea Room also open. Accompanied by Market Stalls.

19th May. 2024 `In Steam` Themed event `Mills & Motors` Cars will be invited, come along and enjoy the day. Gift Shop, Tombola, BBQ and Tea Room also open. Accompanied by Market Stalls.

Combe Mill in its day was the workshop for Blenheim Palace Estate by the River Evenlode. Combe Mill is a Late 19th Century Grade 11 listed Watermill with Steam Beam Engine, Restored Waterwheel, Line Shafting, Collection of Towers Clocks, Barn Engines with all machinery running as used in its day. Make a poker in our Dual Blacksmiths' Forge, Tinkering Area for the Children and much more..

Admission:

Adults £9.00, Concessions £7.50, CHILDREN now FREE..... Dogs most welcomed... Free Parking....Ask about Gift Aid.

Open: 10.30am to 5.00pm

OPEN WEDNESDAY'S FROM 20TH MARCH 2024 for self-guided tours, with volunteers on hand to talk about Combe Mill and its history.

Admission:- Adults £5.00, Concessions £4.00 children free



News from our PCSO

We are have had a large increase in number plate thefts across the Chipping Norton area.

Southcombe Garage OX7 5QH have said that they will fit anti-theft number plate screws for free. Give them a call first to book in. 01608 643999

We've also had a few burglaries in the area, we'd like to encourage people to look to improve the security of their homes. Doorbell cameras and CCTV cameras that live stream straight to you phone when motions are detected are very useful..

Please also sign up for TVP alerts to keep up to date with what is happening in your area.. Scan the QR code below.

Wesley Smith



Hook Norton
Veterinary Group

CARING FOR YOUR PETS, HORSES & LIVESTOCK
24-HOURS A DAY, 365 DAYS A YEAR

CHARLBURY: 01608 730085
HOOK NORTON HOSPITAL: 01608 730501



An independent practice established over 40 years ago, HNVG has a passionate team, dedicated to providing professional veterinary care of the highest quality for your pet, equine and farm animals.

Charlbury Branch Opening Hours:
Monday - Friday 8.00 am - 6.45 pm

Hook Norton Hospital Opening Hours:
Monday - Friday 8.00 am - 6.45 pm
Saturday 8.00 am - 2.00 pm

YOUR LOCAL, INDEPENDENT VETERINARY PRACTICE

**HAPPY PLACE,
RESTORED**

If you love your lawn,
you'll love GreenThumb.
Our year-round treatments
will give your grass the
TLC it deserves.



GreenThumb
LAWN TREATMENT SERVICE

Discover more at
greenthumb.co.uk



Scan here

Banbury branch - 01869 345333 banbury@greenthumb.co.uk



Charlbury Garden Society

It is nice to be able to look out of the window on this bright January day and know that the first signs of spring are emerging. There are snowdrops in the garden and the first tentative bulbs are poking through. In an uncertain world nature doesn't let us down.

We have much to look forward to in the coming months – not least the lengthening daylight. On **March 21st 7.30** we welcome Harriet Rycroft to talk to us. Harriet will combine slides with a practical demonstration of 25 to 30 minutes on **container gardening through the year**. Questions will be welcome during the practical demonstration. Many of you will have seen Harriet on Gardeners' World and as someone who has worked at both Whichford Pottery and Cotswold Wildlife Park, we are thrilled to be able to welcome her.

We are going to try to re-vamp our shows this year and make them easier for people to enter. The Spring show on **April 6th** is always a delight as we combine with the Art Society so there is always lots to enjoy. This year there will also be a 'sketching corner' with helpers on hand to guide us in sketching a flower. More details to follow. We would love you to bring exhibits – don't worry if you're not sure where they belong. We can help you! Do look at the schedule for the show which will be on our website. And please support us – without your exhibits we have no show!

We will also be holding our annual Plant Swap on **May 11th 10-12**. Do come along with any plants, cuttings, seedlings or packets of seeds you wish to donate and take away something you might like to try in your own gardens. Or simply

join us for a cup of coffee and a piece of homemade cake.

This year we will be running the **Great Potato Challenge**. At the Spring Show we will have a limited number of potato sacks and seed potatoes for people to take away and have a go at growing potatoes. There will be 2 classes – one for under 18's and one for the rest of us! We will have a weigh-in at the Annual Show on **August 31st**. Could you be the Charlbury Potato Champion this year? It's a great way to get children involved in growing food. It will be first come, first served, so hurry down.

Do please check out our web site for any more details: <https://www.charlburygardensociety.org.uk/>

Alison Derham
Chair- Charlbury Garden Society



RAINFALL REPORT—2023

The rainfall measured at Lees Rest between 1 January and 30 September 2023 was 665mm and in central Charlbury between 1 October and 31 December was 266 mm, making a total of 931mm, the wettest year since 2019.

The driest month was February with 7mm (0.28ins), and the wettest was March with 130mm (5.2ins) including snow, making it the wettest since our records began in 1982.

Lees Rest is about a mile and a half east of Charlbury.

Nick Potter

Artweeks in Charlbury

Saturday 4 - Sunday 12 May

(including the Bank Holiday on 6th)



Charlbury is a prime North Oxfordshire Artweeks destination. With over 20 artists exhibiting this year, most within easy walking distance of each other, it represents a wide cross section of all the artists taking part in Oxfordshire. Artwork and sculpture can be found in churches, cottages, studios, workshops and gardens.

A trail map will be available in April, providing helpful information and making it easy to find all the artists.

Contact: Maureen Sparling 07779 779121
www.artweeks.org



Charlbury Arts



On a cold winter evening in mid December, a large and varied group of people met in the Memorial Hall, Charlbury and were transported to a Desert Island, sustained by friendship, an interest in art, sausage rolls, mince pies and a glass of wine!

This was the last monthly meeting of 2023 for Charlbury Arts and was widely enjoyed. Six members chose the artworks that they would take to a Desert Island to sustain them in their isolation. The rules weren't strict, Elaine Kazimierczuk chose the Polish Museum of Jewish History building, completed in 2013 to a design by Finnish Architects. Mishi Naomoto will be taking a Futukorogatana, a purse or pocket sword, beautifully made for the Samurai of feudal Japan which she may find useful with a ceramic bowl made in Tobe in Ehime Prefecture, a Japanese Registered Traditional Craft product.

National Portrait Gallery paintings of influential women Octavia Hill (by John Singer Sargent), Mo Mowlam (by John Keane) and Germaine Greer (by Paula Rego) will sustain and inspire Maggie Galliers. These ladies will be interesting company!

Reflections on friends and family will be stimulated by the depiction of Friendship by Qu Leilei and exhibited at the Ashmolean Museum and by a charming painting, Breakfast in Bed, (Mary Cassatt, 1897) chosen by Hannah Farncome. Plenty of time for resting but no breakfast service on this Desert Island!

In the glare of the sun on the sea and sand of the island, there will be pleasure

and relief in a return to Mid Wales, an evocative watercolour painting by

G. John Blockley, chosen by Ron Ford. At night the dark corners of the island will be lit by short animated projections, Girls of the light by Hanna Benihoud was chosen by Kate Allison.

If you chance to visit this Desert Island in the future never fear, you will not be alone. Anthony Gormley's Field for the British Isles, an installation, chosen by Kate Allison, of 40,000 tiny terracotta figures will keep you company. Maybe you could befriend a few!

Back in Charlbury, our monthly meetings for 2024 have started. In January we took 'A Journey through Line' with Chadlington artist Jill Colchester. All enjoyed her animated talk with live demonstrations and videos of her drawing process. The next few months will see us visiting the Galapagos Islands through the sketchbook of David Pollock and learning about Creativity with Children. Adults can have a go at this practical session!

The meetings are held in Charlbury Memorial Hall at 7.30pm on the second Wednesday of each month. Free to members and non members (£5) are also very welcome. The monthly newsletter for members has full details of the meetings which are advertised with posters around the town, in the 'What's On' section of *charlbury.com*, and on our Instagram Page, at 'charlburyarts'.

Do join our adventures, we won't be shipwrecked again until December 2024!

*Joanna Shakir for Charlbury Arts.
charlburyarts@gmail.com*

PELLMANS

Your Local Solicitors

- **Business and Employment Law**
Contracts, Legal Compliance
and Disputes

- **Property**
Residential, Commercial
and Agricultural

- **Wills, Probate and Trusts**
Tax Planning and Lasting
Powers of Attorney

01865 884400

www.pellmans.co.uk

1 Abbey Street, Eynsham, Oxford OX29 4TB
Home visits and evening appointments available

BLENHEIM TAXIS

Local/National Airport Transfers
Airport specialists
Complimentary Wi-Fi
Charlbury based

07773 000 444

www.blenheimtaxis.com

email: enquiries@blenheimtaxis.com

All major credit cards accepted
Corporate accounts welcomed

COTSWOLD GARDEN DESIGNER



- Looking to improve your outside space but stuck for ideas on how to make the most of it?
- Want somewhere to entertain?
- A space for your children to play?
- Or maybe you just need a quiet place to relax, a calming, scented corner, just for you?

I can provide a full garden design, planting plans or a simple garden report - some ideas of how you could best use your outdoor space and the types of plants that you like and would suit the environment.



CONTACT LORRAINE:
lorraine@cotswoldgardendesigner.co.uk
07516262560
www.cotswoldgardendesigner.co.uk

Charlbury's own Community Workshop

A place for everyone — what will *you* come and do?

We're open !

Tuesdays 9.00-12.30 (both craft and woodwork rooms)

Wednesdays 10.00-12.00 (craft)

Thursdays 2.00-4.00 (woodwork)

Come along and join in

www.charlburycommunityworkshop.org.uk



Mallams
1788

Thinking of selling your Jewellery?

Free confidential valuations on any piece(s) you are considering selling at auction.

Home visits also available

Enquiries: 01865 241358 or oxford@mallams.co.uk
www.mallams.co.uk

DIRTY CARPETS, UPHOLSTERY, RUGS



Most carpets dry within the hour
Unbeatable results, removes almost all spots & stains
call
GRIMEBUSTERS

01993 868924 01865 726983
www.grimebusters.co.uk

CHRONICLE ADVERTS

Advertise your business in the **Charlbury Chronicle** and reach over 1600 residences.

To place an advert please ring Graham Jowett on 01608 810666 or email:
advert.chronicle@outlook.com

CHARLBURY TOWN BARBERS
07907 802063

www.charlburytownbarbers.co.uk
Facebook/Charlburytownbarbers1
14 Market Street, Charlbury OX7 3DP

Opening times:
Monday Closed
Tues—Friday 9.00am—5.30pm
Saturday 8.30am—1pm
Sunday Closed

MOSSINATOR[®]
ROOF CLEANING SYSTEMS

Moss Removal & Roof Cleaning
Patio & Driveway Cleaning
Render & Brickwork Cleaning
Solar Panel & Skylight Cleaning
Installation of Bird Protection
Chimney Cowl Installation



Enhance the appearance of your property with our quality assured friendly service
info@mossinator.co.uk - 01865 362797

CHARLBURY COMMUNITY DIRECTORY

Please note that it is the responsibility of each organisation listed in the Community Directory to notify any changes to the Editor

Artweeks - Maureen Sparling (07779 779121)

All Together In Charlbury (ATIC)

To request help (01993 776277). To contact management committee (07487 413892)

Baptist Church - Kay Colyer (01608 810107)
charlburybaptistchurch@gmail.com

Charlbury Amateur Dramatic Society (CADS)

Sue Haffenden, Secretary 01608 676642

charlbury.drama@gmail.com

www.charlbury-drama.com

Charlbury Art Society (CAS) Joanna Shakir

secretary@charlburyarts.co.uk

Charlbury Beer Festival - Michael Peake

info@charlburybeerfestival.org

www.charlburybeerfestival.org

Charlbury Beer & Wine Circle - Brian Murray
(01608 819091)

Charlbury Bowls Club—Chris Webb

secretary@charlburybowls.co.uk

Charlbury Bridge Club— Secretary Monica

Wilkinson (01608 810560)

Charlbury Canoe Club - Hugh Belshaw

(01608 810130) hughandjoan@uwclub.net

Charlbury Chronicle - Susie Finch (07879

693733) editor.chronicle@outlook.com

Charlbury Community Centre—Daniela Jenkins

(01608 811878)

Charlbury Community Speedwatch

charlburycsw@gmail.com

Charlbury Community Workshop

www.charlburycommunityworkshop.co.uk

Charlbury Cricket Club - David Horne Vice

Chairman dw3horne@gmail.com

www.charlburycricketclub.co.uk

Charlbury Day Centre - Tanya Stevenson (07871 795748)

Charlbury & District Probus Club Tony Merry

tonyherry@gmail.com

Charlbury Green Hub - Christine Elliott

(01608 811057) www.charlburygreenhub.org.uk

Charlbury Garden Society

secretary@charlburygardensociety.org.uk

www.charlburygardensociety.org.uk

Charlbury Ladies Luncheon Club—Gill Grason

(01608 810154)

Charlbury Morris - Peter Smith (01608 811007)

peter@charlburymorris.org

www.charlburymorris.org

Charlbury Museum - Curator—

curator@charlburymuseum.org.uk

Charlbury Music Class - Peter Fry (01993

359189)

Charlbury Open Gardens - Catherine Goyder

csfgardens@charlburystreetfair.org

Charlbury Pioneer Country/Western Club

(Ray & Margaret) (01993 831345)

Charlbury Pre-School—Emily Dytor

emilydytor@gmail.com (01608 811200)

Charlbury Royal British Legion - Nick Potter

(01608 810388)

Charlbury School—Head (01608 810354)

office@charlburyschool.org

Charlbury School Association -

charlburySA@outlook.com

Charlbury Scout Group - Cheryl Hornsby -

cheryl@redstonecomputers.co.uk

Charlbury Society - Chairman, Nikki Rycroft

n.rycroft@doctors.org.uk

Charlbury Street Fair - Chairman—Alan Carreras

csfchairman@charlburystreetfair.org

Charlbury Tennis Club - Mark Jarman (01608

811692) charlburytennis@hotmail.co.uk

Charlbury Town Council—Lisa Wilkinson, clerk

(07311 259412) charlburytownclerk@gmail.com

Charlbury Town Football - Keith Claridge

(01608 810201 or 07870 426707)

Charlbury Town Youth Football Club - James

Ball (01608 810270) jolliecat@btinternet.com

Charlbury Town Walking Football

—John Munro charlburytownwff@gmail.com

(07388 010496) www.charlburytownwffsc.co.uk/

walking-football

Charlbury Wildlife Society

charlburywildlifesociety@gmail.com

Charlbury Women's Institute - President -

Heather Hill charlburywi@oxfordshirewi.co.uk

Corner House Community Bookshop—Neil

Pakenham-Walsh (01608 811899)

Corner House and Memorial Hall -Office (07826

056496)

Churches Together - Rosalind Scott, (01608

810562) rosalind.scott@hotmail.co.uk

Cotswolds Voluntary Wardens - Simon

Walker (01608 811414) simon.iets@btinternet.com

Dementia Friendly Charlbury— Meryl Smith

(01608 810192) charlburydf@gmail.com

Friends Meeting House: Sue Terry (01608

811033) email: sueeterry@btinternet.com)

Holiday Club

parishoffice@stmaryscharlbury.co.uk

Methodist Chapel - Sue Tokumine (01608

810366) suetok@hotmail.com

Mind in Chipping Norton (Mental Health

Support) (01608 645296)

Riverside Festival - Andy Pickard (01608

810635) admin@riversidefestival.charlbury.com

www.riversidefestival.charlbury.com

St Marys C of E Church Rev. Fergus Butler—

Gallie (01608 810230)

St Teresa's RC Church Fr Clive Dytor (07484

158642)

Sustainable Charlbury - Liz Reason (01608

811212)

The Bell Inn (01608 810278)

The Bull Inn (01608 810689)

Thomas Gifford Trust- Chris Potts (01608

811878) chris.potts@blakemorgan.co.uk

United Nations Association (West

Oxfordshire) - Neil Pakenham-Walsh (01608

811338)

Walkers are Welcome Tony Merry 07580

917584 tonyherry@gmail.com

Wychwayz Border Morris - Teresa Duester

(01608 810934)

www.charlbury.info - Richard Fairhurst



**Charlbury's
Police Community
Support Officer**

C9837 Wesley Smith

To speak to us about any concerns you may have:

call 101 if it's a non-emergency

or 999 in an emergency

www.thamesvalley.police.uk

also sign up for free crime alerts
www.thamesvalleyalert.co.uk

CHRONICLE ADVERTS

Advertise your business in the **Charlbury Chronicle** and reach over 1600 residences.

To place an advert please ring Graham Jowett on 01608 810666 or email:
adverts.chronicle@outlook.com

MAILING LIST

We have a mailing list for people wishing to receive the *Charlbury Chronicle* who no longer live in the town. **Now £5.50 per four issues; £6 per four issues for overseas subscribers.** Large-print £2.50 for **each** copy. If you wish to be put on the mailing list, please contact Graham Jowett (address in right hand panel).

Please note that **ALL** cheques for advertising, mailing list or donations should be made payable to *The Charlbury Chronicle* and should be sent to The Treasurer, Jessica Youngson, whose contact details are in the panel on the right.

**CHARLBURY CHRONICLE
CONTACTS**

Editor: Susie Finch
tel: 07879 693733
e-mail: editor.chronicle@outlook.com

Assisted by:
Julia Caston: 01608 810240
Barbara Allison: 01608 811262
and others

Advertising & Mailing List:
Graham Jowett,
tel: 01608 810666
gjowettchronicle@btinternet.com
adverts.chronicle@outlook.com

Treasurer:
Jessica Youngson
treasurerchronicle@outlook.com

Distribution:
Maureen & John Walker:
walkermaureen542@gmail.com
Robert Caston: 01608 810240

And thanks to Pauline Jackson for proof-reading this issue of the Chronicle.

The **Charlbury Chronicle** is produced and distributed free to every household in Charlbury. All those involved in its preparation, work on a voluntary basis.

The **Charlbury Chronicle** aims to be impartial and independent and cannot be held responsible for any of the views expressed in its pages.

The editor reserves the right to alter or adapt any articles submitted for publication although hoping to discuss any major changes with the authors first.

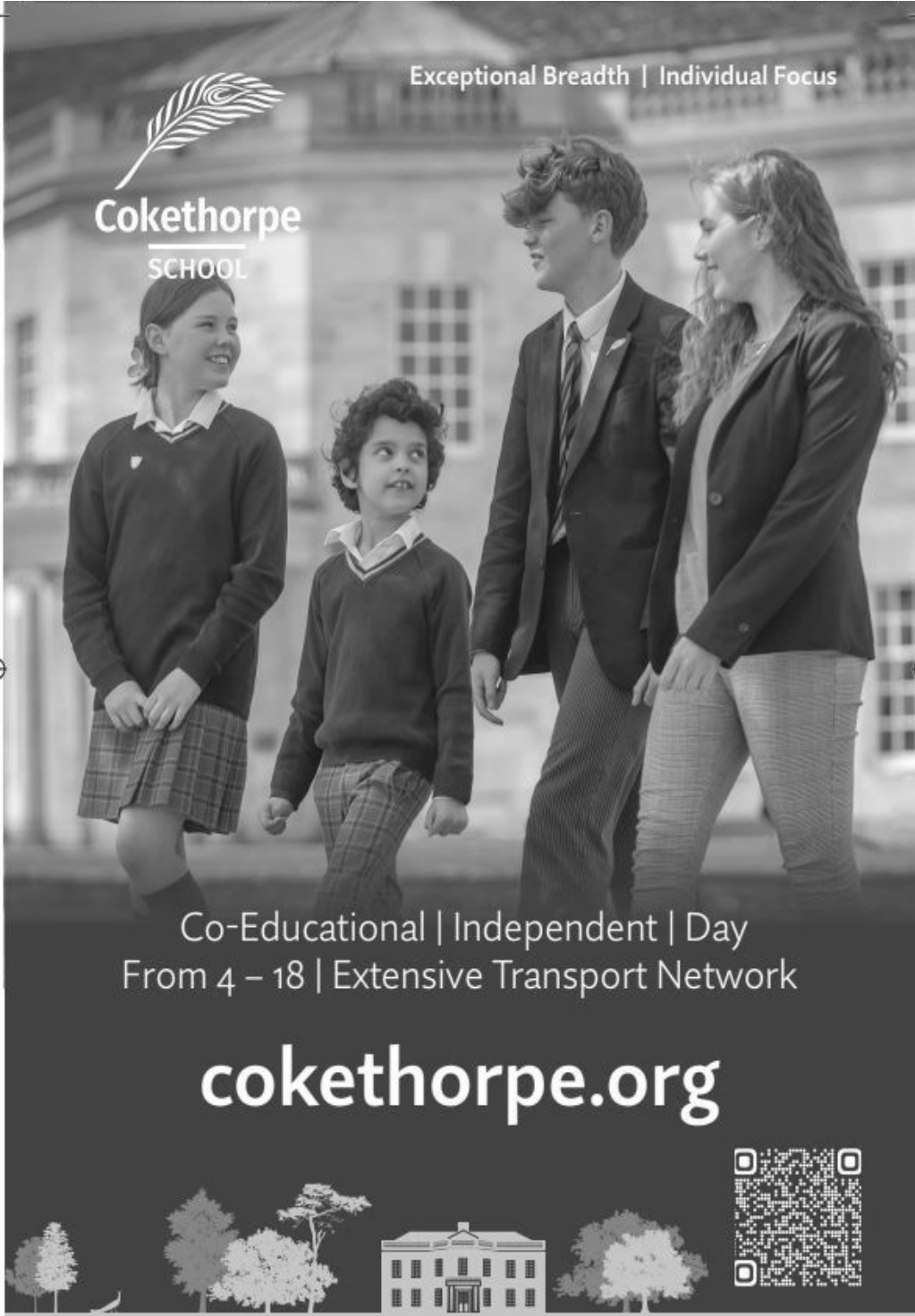
The **Charlbury Chronicle** acknowledges the support of our advertisers and individuals who generously contribute to its funds and hope that any reader using their services will mention the **Charlbury Chronicle**.

Printed by
KMS Litho Ltd, Hook Norton, OX15 5LS
01608 737 640
enquiries@kmslitho.co.uk
www.kmslitho.co.uk

Exceptional Breadth | Individual Focus



Cokethorpe
SCHOOL



Co-Educational | Independent | Day
From 4 – 18 | Extensive Transport Network

cokethorpe.org



SHAW & Co.

Providing legal advice in London and Oxfordshire for 35 years
1 Church Street
Charlbury
Oxfordshire OX7 3PW
Telephone 01608 810100
andrew@shawandcompany.co.uk

Wills, Probate and Administration
Powers of Attorney
Executor & Trustee Services - Inheritance Tax Planning
Property - House and Flat Conveyancing
Commercial Leases and Landlord and Tenant matters
Commissioners for Oaths

"...probably the best and most approachable lawyers I have ever used....."

10 Market Place
Chipping Norton,
Oxon OX7 5NA
Tel: 01608 644808
Fax 01608 644809



1 Church Street
Charlbury
Oxon OX7 3PW
Tel: 01608 811146
Fax 01608 810050

22 The Parade
Oxford Road
Kidlington,
Oxford OX5 3DB

www.fairfaxandcompany.co.uk
charlbury@fairfaxandcompany.co.uk

15 High Street
Bloxham
Banbury
Oxon OX15 4LT

Free Valuations No Sale—No Fee
Specialist Lettings Department
Independent Mortgage Advice
Low Cost Buildings Insurance

**Fairfax & Co. offer unbeatable value and
expert property advice from professionals**