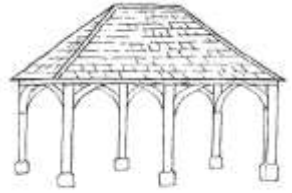


# Charlbury Chronicle



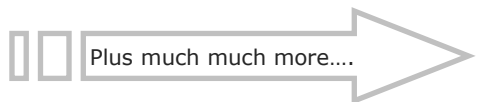
Volume 20 Number 4

Christmas 2016

The Charlbury Chronicle is a free quarterly local community publication run by volunteers covering news and events for Charlbury and the surrounding area

## Inside this issue:

Dementia Friendly Charlbury	6
The Botany Spot	8
A Day's Life: Graeme Widdows	12
The Future of our Post Office	20
Charlbury Refugee Action Group	26
Neighbourhood Forum	27
Charlbury Church Services	30
Coffee Break Page	32
What's On	33
From the Museum	36
Charlbury Community Directory	47



Contacts:-

Editor: editor.chronicle@outlook.com  
Advertising: gjowett2015-chronicle@yahoo.co.uk  
Distribution: brian\_murray\_guide@yahoo.co.uk

# Charlbury Garage

Hixet Wood, Charlbury, OX7 3SB

**01608 810898**

08:30 – 17:00 Monday to Friday

Attending to motorists' needs for over 40 years, we offer a local, friendly, helpful & trustworthy service

- MOT & Pre-MOT
- Tyres & Exhausts
- Servicing
- Batteries
- Aircon
- Bodywork

Competitive tyre prices

MOT £40

Half-price MOT with Full Service

Courtesy car available

Cars bought & sold



[www.charlburygarage.co.uk](http://www.charlburygarage.co.uk)  
[info@charlburygarage.co.uk](mailto:info@charlburygarage.co.uk)

---

## From the Editor

Susanna Finch

---



Well it's that time of the year, when we will be all finding the Christmas decorations and looking forward to buying the tree. I can't believe how quickly its come round again!

The late night shopping in Charlbury will be on 16th December—see page 20, so please do support our local businesses and buy your presents there. You don't have to wait until then, as Cotswold Frames have many gifts, the Post Office have lots of cards and wrapping up paper, plus stamps, and the Deli some delicious grub!

By the time you receive this, the public meeting will have been held on 16th November to discuss the Town Council's proposal to acquire a loan for £200,000 for the Community Centre and the Charlbury Football & Sports Club. The Parish Poll will be held on 8 December. Do please vote—it will be held from 4pm to 9pm in the Memorial Hall.

There is such a lot happening in Charlbury and it was suggested that a What's On column should be included in the Chronicle. So do see page 33 which will give you most of what is happening here. If there events missing, please do contact me so that it can be up to date for the Spring issue.

Congratulations to Street Fair who raised at least £10,000 for the Corner House and Memorial Hall. If you would like to help at Street Fair 2017 please contact Natasha Ely—see p. 19.

And at the end of my first year as Editor, I would like to thank all those who help keep the Chronicle going—and to those who also submit such interesting articles.

May I wish you all a very Merry Christmas and Happy and Peaceful New Year.

*Susanna Finch*



**Please note that the deadline for articles for the Spring issue 2017 is 1st February  
Please send all articles to [editor.chronicle@outlook.com](mailto:editor.chronicle@outlook.com)**



## News from the Charlbury Community Centre Appeal

I'm sure you will all have seen by now

what progress is being made with the building of the new Community Centre and you can find out more about this in the Thomas Gifford Trust article in this issue.

I hope many of you enjoyed the Variety Show on 12th November and I'd like to take this opportunity to thank all our contributors to that event. It was a wonderful showcase of the depth of talent we have in this town.

From a fundraising point of view, we still have work to do and are redoubling our efforts to raise money to finish the Community Centre off in the best way we can, so we have various events coming up, which I hope you will enjoy and various ways in which you can contribute to the cause.

### *Events:*

**Burns Night Supper and Dance**, 21st January 2017, Memorial Hall. There will be a live band and caller and a supper of haggis, neeps and tatties followed by sticky toffee pudding. (Vegetarian and gluten free alternatives will be available). You'll need a dance after all that to work it off!

**Pop-up supper**, 25th February, 7.30pm in the Garden Room of the Memorial Hall. Nicola Morgan and her team have kindly offered to do us another supper. It was fantastic last time and tickets sold out quickly. There are a limited number, so please watch out for this and buy your tickets early.

More events will be announced later, probably to include a Safari supper, a Vintage Clothing sale and a Cocktail or Black Tie party, as well as our usual presence at the Beer Festival and the Wilderness Festival. If you would like to put on an event in aid of the Community Centre, we'd be delighted to hear from you. We could also use a new committee member, if you can spare some time.

### *Contributions*

**Buy-a-Brick Scheme.** This has been a great success and is still up and running, but inevitably there will be a point at which we will have to stop taking new contributions this way and have the list of names made to go on the wall in time for opening. So please don't delay in buying your "brick". If you prefer not to have your name appear on the list in the lobby, we can, of course, do it anonymously. Why not buy somebody a brick for Christmas? If you are interested in a brick as a gift, we can supply a certificate showing the name of the person who will go on the wall and the name of the person who has bought it. The Buy-a-Brick form is included again in this issue of the Chronicle.

**Standing Orders.** We have one or two committed supporters, who have set up a standing order in favour of the Community Centre, to donate a fixed sum every month for a number of years. This is a very helpful way to contribute, as it gives some income over the years to help with set-up and running costs. We will be launching this scheme shortly, but if you are interested in contributing this way, please do get in touch.

**Shopping List.** We have identified a number of items that still need to be funded and we are hoping that individuals, companies or organisations might like to sponsor something permanent for the Community Centre. These items range from sports equipment and library fittings to things like the café, kitchenette and signage. On the facing page is a list of the items that need to be bought and their cost; if you would like to sponsor something, please let us know.

I would like to thank the people of Charlbury, for the huge amount of support and generosity we have had in trying to raise funds for this project. The Charlbury Community Centre Appeal has raised an incredible £225,000 over the years, just from activities within the town and donations from people living here. I think that's something to be proud of.

Tanya Stevenson  
Chair, Charlbury Community Centre Appeal  
01608 810216. [billandtanya@outlook.com](mailto:billandtanya@outlook.com)

ITEM	VALUE	SPONSOR
Café and Kitchen	£10,000	
Computer System Implementation/ Training	£12,000	
Digital Display	£2,000	
Sports Equipment	£7,500	
<b>LIBRARY</b>	<b>£18,355</b>	<b>£10,000 Friends of Charlbury Library</b>
Bean bags for Children's Corner x 6	£35 each (Total 210)	
Chair for Librarian	£160	Sponsored with thanks
Chairs for café x 16	£116 each (Total £1,856)	
Chairs for IT positions x 2	£120 each (Total £240)	
Coffee table	£145	
Double sided book display pod	£550	
Easy chairs for library users x 3	£298 each (Total £894)	
Flip Tables for out-of-hours library use x 3	£200 each (Total £600)	
Library Reception Counter	£4,350	
Rug for Children's Corner	£200	
Single study desk for librarian	£175	Sponsored with thanks
Sponsor a book shelf (100 m)	£70 per metre (Total £7,000)	3 metres sponsored with thanks
Tables for café x 4	£210 each (Total £840)	
Two seater IT desk for library users	£285	
Two seater sofa	£650	
Rug for Children's Area	£200	

Charlbury

# CHRISTMAS TREES



**Come and choose your own Christmas tree growing in the field.  
Thousands to choose from – Norway Spruce and Belgian Spruce**

Open November 26th and 27th to choose for collection later, and  
then December weekends until Christmas to choose and collect.

**9.30am - 4.00pm**

Halcyon Honey Farm  
Woodstock Road, Charlbury, OX7 3ET  
Tel: 01608 810260 Mob: 07969 208518

**Turn off A44 onto B4437 to Charlbury and look out for the banners!**



If you wish to "Buy-a-Brick" as a gift and support the Community Centre Appeal, we can supply a certificate of the donation. Just tick here to indicate that you would like one delivered to you:



## Buy-a-Brick scheme

### £25 per name

Name(s) Please print clearly and exactly as you want them to appear on the list of supporters, which will be in the lobby of the Community Centre (you are not buying an actual brick!):

.....

.....

*(You can list your family members individually for £25 each or put a family name, such as "The Jones Family" for one payment of £25. Obviously, if you want to donate more, that is fine too)*

Contact telephone number..... email:.....

Amount enclosed (cheques payable to *Charlbury Community Centre Appeal*)      £.....

Or you can use Make-a-Donation at <https://make-a-donation.org/campaign/charlbury-community-centre-appeal>

If you pay income tax, please fill in below, so we can reclaim your tax:

### Gift Aid declaration

#### ***Charlbury Community Centre Appeal***

Please treat the enclosed gift of £ .....as a Gift Aid donation.  
I confirm I have paid or will pay an amount of Income Tax and/or Capital Gains Tax for the current tax year (6 April to 5 April) that is at least equal to the amount of tax that all the charities and Community Amateur Sports Clubs that I donate to will reclaim on my gifts for the current tax year.

Title..... Initial(s).....Surname .....

Home address .....Postcode .....

Date .....Signature.....

Please return this form to Sarah Eaton, Brae Rise, Crawborough, Charlbury OX7 3TX  
([sarah@sarahaeaton.com](mailto:sarah@sarahaeaton.com) - feel free to email this form to Sarah).



## **Working to ensure that Charlbury is an All People—All Ages—Friendly Community**

*Relaxed Film Screenings and Performances at Chipping Norton Theatre - for those of us who cannot always manage to sit still and quietly through a performance and maybe like to sing along with musicals*

Did you know that the Chipping Norton Theatre includes in its annual programme some Relaxed Film Screenings and Relaxed Performances which include some changes to increase accessibility for all?

Relaxed Screenings are open to everyone but are particularly suitable for people living with dementia and their carers and for those with learning disabilities. Relaxed Performances have environments adapted to welcome families with children with an Autistic Spectrum Condition, sensory and communication disorders and those with learning disabilities. In both cases there is a more relaxed attitude to noise and movement in the auditorium and some changes are made to lighting. There are also relaxation or chill-out areas available.

Programme details are published on their website: [www.chippingnortontheatre.com](http://www.chippingnortontheatre.com).

Relaxed Screenings and Performances are marked accordingly. There are also special sections in their printed programme brochures. To contact The Theatre for more information phone 01608 642350. Familiarisation visits can be arranged for those who want to attend relaxed performances or screenings prior to the event. (Contact the Front of House Manager 01608 649121 or [frontofhouse@chippingnortontheatre.com](mailto:frontofhouse@chippingnortontheatre.com) to make arrangements.)

The Relaxed events scheduled for 2016 will have come and gone by the time this article appears but watch out for details of 2017 events (not yet published). If it helps, you can contact Dementia Friendly Charlbury on 01608 810192 or email [charlburydf@gmail.com](mailto:charlburydf@gmail.com) and we will share whatever information we have at the time.

## **Dementia Oxfordshire and our local Dementia Adviser**

Shirley Crawley is one of eleven Dementia Advisors working for *Dementia Oxfordshire*, a service managed by AgeUK Oxfordshire, Guideposts, and Young Dementia UK. *Dementia Oxfordshire* provides information, advice and signposting for people with dementia and their families. Shirley's area covers Charlbury, Carterton, Eynsham, Burford, Long Hanborough and all the villages in between.

Shirley receives referrals from a Memory Clinic that she supports with a consultant and nurse twice a month in the Witney Community Hospital. Also referrals come from doctors' surgeries, self-referrals and other professionals.

Having received a referral Shirley will contact the carer or person with dementia (PWD) to arrange a convenient time to visit the family. This visit could be to discuss a range of issues including benefits, Power of Attorney and local activities available. Part of the *Dementia Oxfordshire* team are Dedicated Support workers, who, if appropriate, can link PWD to groups and day-care centres in their local community over a short term period.

*Dementia Oxfordshire* are also involved in developing groups for people with dementia to access. For example, there is a men's group in Carterton and a music group in Witney. *Dementia Oxfordshire's* partnership have training to offer for carers and families caring for PWD.

You can contact Shirley for further information on 07469 150668 or email: [shirleycrawley@dementiaoxfordshire.org.uk](mailto:shirleycrawley@dementiaoxfordshire.org.uk)

*Meryl Smith*





*As 2016 comes to a close  
Your No 1 shop who everyone knows  
Is stocked to the rafters with wonderful gifts  
Just walk through the door for some glorious whiffs.*

*Diffuser and candles are locally made  
Beautiful soaps all tied up with braid  
With wonderful wrappings and cards galore  
There's so much to choose from as you step through our door.*

*Charlbury's new Tote bag  
Has proved such a hit  
We've now matching tea towels  
So do get yours quick.*

*With blankets and rugs recycled from bottles  
A new lease of life before they are fossils  
Hard wearing and soft and also pet friendly  
Great for the house to make your friends envy.*

*And new for this year our gift just for you  
A 10% discount off decorations it's true  
Just bring in this poem to claim your reward  
Valid this December so hurry all aboard.*

*So a very Merry Christmas to one and all  
Remember to visit Cotswold Frames this fall  
And may your wishes all come true  
With season's greetings from us to you.*

## *Merry Christmas*

*Cotswold Frames • Market St • Charlbury • (01608) 811805*


©T.K. Widdows 2016



# B

## THE BURNSIDE PARTNERSHIP

OXFORD LONDON



We are a niche law firm working with clients in London, Oxford and across the Thames Valley, and have recently opened an office locally at Blenheim Palace Sawmills, near Witney.

We provide specialist advice on Wills, inheritance tax and general estate planning for individuals and couples. Whilst inheritance tax is a problem for most of our clients, we are also experts in advising on other potential threats to the family and its wealth, such as mental incapacity and divorce of children.

To help you review your current position we are happy to provide a free, no obligation one hour consultation.

For further information or to book a meeting, please contact:



**ANNA BURNSIDE PARTNER**  
anna.burnside@theburnsidepartnership.com

**FIONA WHEELER PARTNER**  
fiona.wheeler@theburnsidepartnership.com

T 01865 987781 [info@theburnsidepartnership.com](mailto:info@theburnsidepartnership.com) [www.theburnsidepartnership.com](http://www.theburnsidepartnership.com)  
The Carpenters' Workshop, Blenheim Palace Sawmills, Combe, Oxfordshire OX29 8ET

## The Botany Spot

The flora of this area has much to interest the botanist, from the specialist, excited to see the extremely rare Downy Woundwort *Stachys germanica* (with 'Endangered' conservation status) to the small child enjoying the simple pleasure of the native Bluebell *Hyacinthoides non-scripta*, or making a chain from Daisy flowers *Bellis perennis*.

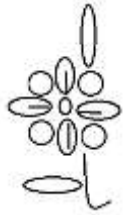
Collecting data for the Botanical Society of Britain and Ireland (BSBI) 2020 botanical atlas is a massive project taking place throughout the country. Most people in Charlbury and the surrounding villages are probably unaware of the data gathering which is going on all around them through this year and until 2019. All the species of wild flowering plants found in the area are being listed with meticulous care by volunteer botanists from organisations such as the Oxfordshire Flora Group and by some individuals with a particular interest in the local plants.

The first atlas of the British and Irish flora was published in 1962 and pioneered the use of 'dot-maps' showing the distribution of plants aligned to the OS grid and the latest edition will update the record and allow analysis to take place of any recent changes. The project may seem somewhat Victorian in its scope but that is far from the truth, current plant taxonomy and identification are based on knowledge gained from cutting edge science.

One of our local poplar trees, which was proving difficult to identify unambiguously, is to be identified using DNA analysis by a specialised laboratory. Given a small cutting with some green healthy leaves the scientists extract DNA and carry out two tests. Firstly, a test is run to see if the tree is a native Black Poplar *Populus nigra ssp. betulifolia* or a hybrid poplar. Secondly, a DNA fingerprint is generated for the tree. This enables them to check against a database of black poplars, which have previously been tested to see whether the tree is a common clone.

Christmas is by tradition associated with three familiar plants which come into their own at this time of year and two of which are very easy to find growing locally.

**Ivy *Hedera helix***, is one plant which bucks the trend of summer flowers and autumn fruit. Its round heads of greenish-yellow flowers, each with 5 petals, open in autumn and early winter, followed by black berries in spring.



Because of this reversed seasonality, Ivy is a very important plant for wildlife, producing nectar and fruit when few other sources are available.

The Ivy plant has two types of leaves: typical 'ivy shaped', palmately-lobed, juvenile leaves on creeping or climbing stems and un-lobed, adult leaves on fertile flowering stems which are exposed to full sun, usually high in a tree.

Ivy does no harm to trees, contrary to popular belief and for the sake of the wildlife, so dependent on it, should be left to grow unimpeded wherever possible.

**Holly *Ilex aquifolium***, with its glossy, dark green, spiny leaves is a native plant found commonly in hedges, open woodland, rides and corners of fields in this locality. Beyond the reach of grazing animals its leaves are often spineless. Male and female flowers are found on separate plants (dioecious) so the red berries, very popular at Christmas time, actually only occur on female trees.

**Mistletoe *Viscum album*** is a partial parasite on a variety of trees, especially poplars, limes, maples, willows, apples and hawthorns – found in hedgerows, gardens, parks and orchards but not usually in dense woodland. Male and female flowers are borne on separate plants (again, dioecious) in and around Oxford and in the southern tip of the county.

It has however been recorded in this area (see the current BSBI online atlas) but not in recent years, so keep an eye open for it and it would be good to add it to the record for the 2020 atlas if it is still around! Please contact Jo if you know of any local sites. [jo@joanna-bell.net](mailto:jo@joanna-bell.net)

### Websites:

BSBI <http://bsbi.org/>  
Oxfordshire Flora Group  
[www.anhso-ofg.org.uk/](http://www.anhso-ofg.org.uk/)  
Wychwood Flora Group  
[www.wychwoodproject.org/cms/content/wychwood-flora-group](http://www.wychwoodproject.org/cms/content/wychwood-flora-group)

# THE CHARLBURY SOCIETY HISTORICAL RESEARCH GROUP

## WALCOT (Part I)

Walcot was within the Lordship of the Manor of Charlbury. The Lordship was part of the endowment of Eynsham Abbey granted in 1094, thus the Abbot of Eynsham was the Lord of the Manor of Charlbury until the dissolution of the monastery in 1539. During the Abbey's ownership Walcot comprised a small hamlet and farm.

The first documented evidence of the occupier of the farm comes from the will of John Hacker who died in 1548, nine years after the dissolution of the Abbey. John's will records that he held the farm on lease which he left to his youngest daughter Elizabeth, then under age. He was wealthy, leaving property in Shipton & Milton under Wychwood to his five married daughters or their children. Other legacies included some 45 acres of land with a tenement in Churchill, the income from which was to be distributed to the poor of Charlbury on Good Friday. His farm stock, left to various relations, totalled over 300 sheep, 6 oxen, 18 cows and a bull.

In addition to the farm lease, Elizabeth received much of the furnishing of the farmhouse including a silver goblet with cover, a silver salt and 11 of his 'beste sylver spones with knobs on the ends'. He appointed three overseers to care for Elizabeth during her minority until she was 21 or married. However, if Elizabeth proved to be obstinate and would not be ordered by the overseers, and if she wilfully contracted a marriage with anyone not approved by them, then her legacy would be distributed to John's other daughters or their heirs. If Elizabeth died before the age of 21 and unmarried, then John wished that the highway at Charlbury bridge leading between Charlbury and Walcot should be 'honestly repayed' to the value of four or five pounds from her legacy, and the balance paid to his other children.

Frustratingly, there is no mention of Elizabeth Hacker in the Charlbury Parish Registers, which do not begin until 1559, or in any other documents which have come to light, so we don't know whether

she lived until she was 21 or married. By 1575 the occupation of the farm had changed and was in the hands of William Catesby and Richard Fitzhugh. Richard and then his son owned the property until 1613 but more on this in Part II.

Besides this family puzzle, John Hacker's will is interesting because he mentioned over 35 people and often where they lived. This shows the range of contacts he had. His daughters were married to men from Bampton, Burford, Leafield and Sonnington; his executors were Charlbury men, but the overseers came from Cornbury, Woodstock, and North Leigh; and he owed money to people from Burford, Charlbury, Churchill, Lyneham, Milton and Woodstock.

*Geoffrey Castle*

*The Group thanks the Charlbury Town Council and the Charlbury Beer Festival for their generous support which enables them to continue transcribing Charlbury's probate and other documents.*

## **Walcot Part II to follow next year**



## **PATRICIA FREEMAN JEWELLER & SILVERSMITH**

Visitors and commissions welcomed  
Tuition by arrangement

Tel: 01608 810360

E: [patriciafreeman5@googlemail.com](mailto:patriciafreeman5@googlemail.com)  
[www. PatriciaFreemanSilversmith.com](http://www.PatriciaFreemanSilversmith.com)

---

## Charlbury Tennis Club

---

There's still plenty of tennis to be played over the winter months at the Nine Acres courts. Social tennis sessions are held three times a week: Sundays at 2pm and Thursdays at 7pm (with floodlights) when a committee member is present to ensure that everyone gets a game; and also on Mondays at 1.30pm.

There is also competitive tennis in the winter teams which the club enters in local leagues.

Membership fees are some of the lowest among clubs in the local area, with reduced winter membership available. Meanwhile the summer of 2016 saw Charlbury win the Wychwood league, while the A and B teams competed in the midweek Banbury league, and the mens and ladies A and B in the Thames Valley leagues.

There were also regular junior sessions run by tennis coach John Werner, who is also available for private tennis coaching for both adults and juniors – individuals or groups. Contact him on 07825 381725 or email [johnwerner@hotmail.co.uk](mailto:johnwerner@hotmail.co.uk).

On the Sunday that the clocks went back, eight pairs contested the club's first Salvador Sunblad memorial trophy for mixed doubles.

To find out more about Charlbury Tennis Club, go to [www.charlbury.info/](http://www.charlbury.info/) community, phone Mark Jarman on 01608 811692 or email: [charlburytennis@hotmail.co.uk](mailto:charlburytennis@hotmail.co.uk)

### CHRONICLE ADVERTS

Advertise your business in the **Charlbury Chronicle** and reach over 1550 residences.

To place an advert please ring Graham Jowett on 01608 810666 or email: [gjowett2015-chronicle@yahoo.co.uk](mailto:gjowett2015-chronicle@yahoo.co.uk)

---

## Charlbury Day Centre

---



By the time you read this entry, we will already be in Christmas mode, having had our visit to the pantomime and will be looking forward to welcoming you all to our **Open Morning on Wednesday 7<sup>th</sup> December** and, as usual, we will be dispensing coffee, mince pies and wine from 10.30am until 11.45am. There will also be delectable home baked goodies to purchase and a raffle.

Finally, can I flag up that we have availability for a new member, so if you know of anyone who would like to join us, let me know (Bob Tait 01608 810150) or better still bring them along that morning.

*Bob Tait*

---

## Corner House News

---



Please support our Christmas themed **Coffee Morning on 10<sup>th</sup> December**, at 9am in the Memorial Hall, raising funds directly for these much appreciated community facilities. Lots of Christmas Fayre so do all come along.

We can report that the professionally-equipped Memorial Hall kitchen is attracting many new users. Please remember that the two dishwashers need 40 minutes to heat up and that they must be emptied and drained directly after use. If anyone needs a master-class in their operation, just contact me.

*Stephen Andrews, Chairman*  
*Corner House & War Memorial Hall*  
*01608 811212*  
*[stephen.andrews@phonecoop.coop](mailto:stephen.andrews@phonecoop.coop)*

# DANCERCISE



**High & Low Impact Intensity  
Suitable for all ages & abilities**

**TASTER SESSION ONLY £3!!**

**Charlbury Methodist  
Church**

**MON & WED: 7.00-8.00pm**

**TUES: 10.15-11.15am**

**JUST WALK IN!** (Bring exercise mat)

**Louise Barnes: 07879 685579**  
**123dancercise@gmail.com**

See Charlbury website:  
'Business/Health'

*Please consult your doctor before  
beginning an exercise programme or*



## DANCERCISE

*Dancercise is your local dance fitness class and perfect for winter.*

By taking part in the exercise class you can prevent winter illnesses, and improve your system function. It will also help regulate your body temperature and improve blood circulation. Blast those winter blues away, combat fatigue and it will act as an energy and vitality booster.

*Dancercise is a friendly social group where you can enjoy fun dance steps to popular music.*

Burn fat efficiently and improve your metabolic function. It will also improve your posture and help in shaping your whole body.

And as with any exercise, it will help strengthen your heart and lungs. It has been proven that physical fitness is central to health.

Contact Louise on 07879 685579 to start on your new journey! And a Merry Christmas and a Happy New Year!



## FIREWOOD

Quality Seasoned Hardwood Logs

1 Cubic Metre £75

2 Cubic Metres £130

4 Cubic Metres £240

Softwood also available

Kindling & Stacking Service

Order Online: [www.jagtimber.co.uk](http://www.jagtimber.co.uk)

**Tel: 01993 868001**

## **A Day's Life: Graeme Widdows, Banbury Hill Farm**

I am up by 7.30am and go to The Shed for my breakfast. The Shed is our new café, opened in Spring this year, and run by our daughter Jane. We keep it open every day from 7am to 5pm, all year round as we let holiday cottages and have B&B guests right through the winter. It attracts a lot of cycling groups, young mums with their pushchairs, people driving past, and so on. We have made a walk up from Charlbury inside our field and then up through the woodland we have planted.

Then I do whatever is needed on the site. We have caravan pitches, a rally field, holiday cottages and B&B guest rooms. Running it is a 24/7 job, and my work changes by the minute. It often involves minor repairs –mending a leaking tap, replacing light bulbs, sorting out why a boiler was not working (once because a broom handle had fallen on the switch) and so on. If we can repair it we will, and generally do most of our plumbing repairs, otherwise we need to call in the professionals to help us.

At the moment, I am waiting for the electrician to come and replace the main switch in the site laundry. And then there are regular jobs: emptying the dustbins – there are 50 on the caravan site alone, and in the summer when the site is full, these need emptying 2-3 times a day; checking the holiday cottages; mowing the grass (and I can see that it needs doing again); maintaining the paths in our woodland using bark; cleaning out drains; dealing with wasp's nests; the list goes on.

About 11.30am we all have a coffee break in The Shed, where my wife Angela, myself and the whole team enjoy a slice of cake –but so far I haven't put on any weight! We employ 8 full-time staff all year round, but at peak times the numbers can reach 25 or so. I don't cook, but if Angela goes out at lunch time, I make myself a 'greasy spoon' lunch - a couple of fried eggs, beans & toast!

Our caravanners and other guests are all very nice people, and we try to help out when they have problems with their vans and other equipment. A recent problem

some have found is their car batteries become flat. This may be because their car boots are left open. So I use some jump leads to get them going again. This happens so often that I now charge them £2 which I collect for the Air Ambulance. Many people come to the site regularly and have been coming for years. One couple here now have been coming since the site opened in 1984 and another chap comes and stays on pitch No 7 every bank holiday. When I get the new booking diary out at the start of every year, he is the first person I put in.

What do I do in the evening? The paperwork which any business has keeps me occupied and I often go to bed after midnight. But Monday evening is Rotary night. I belong to the Chipping Norton Rotary Club, but like many similar groups our numbers are declining. I think it is because people have to work such long hours now, so they come home too late to do anything else. I am also a Trustee of several local charities: the Charlbury Exhibition Foundation which gives grants to young people about to start further education courses; and the Long Hedge and Ticknell Charity which supports older Charlbury people. We used to use the money to give them small amounts at Xmas, but now, since we've closed the list, we have enough funds so that we can give grants to the Evergreens, the Day Centre, and a few other organisations.

I was born in 1941 and my father ran the garage & cycle shop in Station Hill by the Toll House (*see photo opposite*). The road was called Station Hill then, but in the late '50s or so, the name was changed to Dyers Hill. I don't know why. As a youngster I kept chickens, around 300 of them, in the field up to Church Lane, and had an egg round. I had about 16 sheep, which I kept at the back of Rooks Nest, up the Spelsbury Road, though I did move them around. My sister and I raised 200 turkeys for Xmas. I went to school in the old Grammar School and our teachers were Miss Bolton and Mrs Foster. One night the school caught fire and I was very excited, no more school, but we were put in the top rooms of the Corner House and then in the Parish Rooms.

I left school at 15 – I was an Easter leaver - and wanted to be a carpenter, but ended

up being offered labouring jobs. I worked for Mr Timms at Conygree Farm for seven years, and then spent all my savings buying some machinery, and ran my own business as an agricultural contractor. I was on the Town Council for 25 years, and chairman for some of that time. A group of us built the first Jubilee Bridge, using my machinery. What did the Council give me when I left? A bolt from the Bridge with a twisted thread! A memento that I still have today.

I married Angela in 1964 and we lived in Nablus –a house on the Slade that no longer exists. Angela and I have five children: Jane and Karen who help us on the site, Jill who is married with two children, Tim who runs the picture framers shop in Market Street, and Graeme who is a cabinet maker, and runs a kitchen business in London.

We wanted more land, and when Banbury Hill Farm came up for sale, we were able to buy it. The site had a number of buildings on it, including a barn built about 1700, but we got permission to build the current farmhouse. I used the land mainly as a base for my contracting business. But changes were happening in agriculture – to keep up to date I would have to get far bigger machines, and borrow the money to do so. I didn't want to do that.

Someone suggested we changed to run a caravan site. So we set about investigating this. We bought ourselves a caravan and spent some time visiting sites, with tape measure, pencil and notebook, staying only one night in each site. We didn't learn what to do so much as what not to do. On one site, the gents toilet block had about 6 sinks, all different colours. In those days, that meant green, pink, beige etc. The owner seems to have got a job lot from a builder's yard. So in 1984, we got planning permission for a change of use, sold all the farm equipment, and I spent two years building the site. Our first holiday cottage was a little cottage at the end of the barn. Since then we have converted the barn, and the old piggery into holiday lets, planted our woodland, and more.

The electrician has arrived now so I better see to him.

*Graeme Widdows was talking to Barbara Allison*



---

## Charlbury Society

---

Well, the new programme for the 2016 season is well underway. Attendance at meetings has been good so far.

By the time you read this edition, we will be well on the run up to Christmas, so I hope you'll have enough time in your diary to come to the presentation on the 9 December, entitled 'A Spencer Love Affair' to be given by Allan Ledger. There will be mince pies to accompany the tea and coffee that precede Allan's talk – they could be the first of the festive season!

In January, the talk will be given by Robert Harding from the CPRE on 'Threats to the countryside from proposed housing development' - a very topical issue given recent developments and proposals in Charlbury.

The February talk is by Jody O'Reilly on Assessing built heritage assets, significance and settings, which should give yet more to think about regarding Charlbury's context.

I hope you'll be able to join us at one or all of these events. The evenings commence with refreshments at 7-30pm with the talk starting at 8-00pm and all take place in the Memorial Hall.

Membership of the Society costs just £8.50 per year and guests are welcome for a charge of £3-00 per session.

*Anne Lawson-Porter, Chair*





## CHARLBURY CRICKET CLUB

Our three senior teams in the Oxfordshire Cricket Association (OCA) had a mixed 2016 outdoor season. The first XI started an amazing run of winning games, holding top place in the premier division, but in the second half faded away to end up in fifth spot, still their best performance in recent years. The second XI suffered badly from unavailability of players and came second from bottom in division five, while the third XI, the gateway into senior cricket for our young players, fared the same despite some very close games.

Changes are afoot, however. On the near horizon is the likelihood of a merger between OCA clubs and many of those in the Cherwell League, starting in the 2018 season. Discussions are ongoing with several key issues to settle, including the use of neutral umpires and whether to supplement the OCA's win/lose format to

include the possibility of drawn games and changes to the points system.

Our other senior team plays in the Women's Midlands League division two and this year finished mid-table. It has been good to see some of the girls from our youth section come through and stake a claim to play in these games. The club thanks all those who are helping to sustain the club's profile and development, particularly coaches and managers of all our youth section age groups, as well as those helping to organise much-needed fundraising events like the Fireworks and Bonfire Night.

Cricket continues through the autumn and winter months, with the club fielding two six-a-side teams in the Banbury Indoor League. And decisions are to be made about indoor training sessions for both our youth, senior and women's sections. Our Charlbury Cricket Club website ([www.charlburycricketclub.com](http://www.charlburycricketclub.com)) has been remodelled and is a useful source for anyone wanting to know more about us. Come and join us for the 2017 season.  
*David Horne, vice chairman*



## Independent Estate Agent

For all your Sales and Lettings requirements contact Wychwoods, for a friendly, experienced, pro-active and caring service across West Oxfordshire and into the Cotswolds  
[www.wychwoods.com](http://www.wychwoods.com)

[sales@wychwoods.com](mailto:sales@wychwoods.com)

[let@wychwoods.com](mailto:let@wychwoods.com)

**BURFORD**

01993 824800

**CHIPPING NORTON**

01608 637247

**MILTON-UNDER-WYCHWOOD**

01993 832288

**Contact us today, we are here to help.**

# BLENHEIM TAXIS

Local/National    Airport Transfers  
Airport specialists  
Complimentary Wi-Fi  
Charlbury based

**07773 000 444**

[www.blenheimtaxis.com](http://www.blenheimtaxis.com)

email: [enquiries@blenheimtaxis.com](mailto:enquiries@blenheimtaxis.com)

All major credit cards accepted  
Corporate accounts welcomed

## Brian's Barber Shop

Formally Charlbury barbers. Under new management

01608 810630

Senior citizens day every day!

Opening times:

Mon. closed. Tues. 9-1 2-6. Wed. 10-2 3-7.

Thurs. 9-1 2-5.30 Fri. 9-1 2-6. Sat. 7-1

**CHARLBURY FARMERS' MARKET**  
**on the Playing Close between**  
**9am and 1pm on**  
**Saturday, December 10th**

Charlbury Farmers' Market is administered by Thames Valley Farmers' Market Co-operative Ltd. and organised by Lee McCallum,  
email [marketmanager@ymail.com](mailto:marketmanager@ymail.com)  
tel: 07779 400421



Individual &  
Inspired ....

Market St Charlbury  
Oxon OX7 3PL

**01608 811805**

[tim@cotswoldframes.co.uk](mailto:tim@cotswoldframes.co.uk)



# The Killingworth Castle

WOOTTON BY WOODSTOCK

## 2 COURSE SET MENU only £11.95

Available Mon-Fri lunch (12-2.30pm) and Mon-Thurs dinner (6-6.30pm only)

Our great value set menu showcases

2 courses of simple, seasonal fare.

Changes weekly & runs alongside main menu.

---

**TO BOOK YOUR TABLE PLEASE CALL - 01993 811401**

---

*Same deal available at our sister pub Nr. Chipping Campden:  
The Ebrington Arms [www.theebringtonarms.co.uk](http://www.theebringtonarms.co.uk)*

### **The Killingworth Castle**

Glympton Road, Wootton by Woodstock

Oxon, OX20 1EJ

**t: +44(0)1993 811401**

[reservations@thekillingworthcastle.com](mailto:reservations@thekillingworthcastle.com)

[TheKillingworthCastle.com](http://TheKillingworthCastle.com)





## Couple celebrate top accolade for sixth year running at Cotswold pub

Two Cotswold pubs owned by Claire & Jim Alexander are celebrating high praise this week following the announcement of several awards.

The Ebrington Arms, near Chipping Campden and The Killingworth Castle in Wootton by Woodstock both received high praise from both the AA rosette awards scheme and Michelin.

The Ebrington Arms, that has been run by Jim & Claire Alexander for nearly ten years, has been awarded two AA Rosettes for the sixth year running. Its sister pub, The Killingworth Castle in Wootton by Woodstock has retained its coveted Michelin 'Bib Gourmand' for the third year running and also an AA rosette. Both pubs are Michelin and CAMRA (Campaign for Real Ale) recommended.

The Ebrington Arms has either won or been runner-up (North Cotswolds CAMRA) in seven out of the eight years and The Killingworth Castle received runner-up for the first time in it's second year of business last year under the couple's ownership (North Oxon CAMRA).

The couple brew three of their own beers and are hoping to start bottling their most popular ale, Yubby Bitter in time for Christmas.

Claire Alexander commented; "It's been a great week and

*testament to our brilliant staff over the years that we've managed to retain this standard of cooking. Our chefs Chris Ellis and Sonya Kidney do an amazing job with their teams creating the perfect menus that incorporate exciting a la carte dishes and pub classics."*

Their pubs are best known for their atmosphere that retains a lively feel with locals and drinkers as welcome as the foodies that flock from the Cotswolds and beyond. Both pubs have newly refurbished rooms, both also awarded 4 stars by the AA this year.

### **New Set Menu – 2 courses for only £11.95**

The award-winning food is being celebrated with a Special Set Menu where you can sample the best seasonal two course fare at only £11.95. Changes weekly.

### **Sunday Roast**

Full traditional Sunday roast dinner with all the trimmings, 2 courses £20, 3 courses £25.

### **Christmas dinner**

Available 1-24<sup>th</sup> December. Two courses £22, 3 courses £26. Parties welcome.

### **To book a table please call 01386 593 223**

**For further information please contact Claire Alexander on Tel: 01386 593 223 or [Claire@yubbyinns.com](mailto:Claire@yubbyinns.com)**



### **FRIDAY COFFEE MORNINGS AT THE CORNER HOUSE**

A reminder that **HOT DRINKS & HOT SCONES** are served every Friday morning between 10am and 11.30am at the Corner House.

*Proceeds are for the upkeep of the Corner House and Memorial Hall*

Come and meet your friends!

### **PLEASE NOTE:**

Distribution of the *Charlbury Chronicle* each year will be during the last week of February, May, August and November.

If you receive more than one copy, please notify the distribution coordinators, Brian and Shelagh, on 01608 819091

If you know of someone who does NOT receive a copy, let Brian and Shelagh know and the necessary arrangements will be made for future deliveries.



The Family Matinee in December is **The BFG** directed by Steven Spielberg. **Florence Foster Jenkins**, the January film, is based on the true story of the American Socialite once called, "the world's worst opera singer" and, in February the film is **Eye In The Sky**, starring **Helen Mirren** and the late **Alan Rickman** in his final screen role.

**Films are shown in the Memorial Hall. Doors and our popular wine and beer bar open 45 minutes before the film. Admission: Adults £5 / U15s £3 (when applicable).**

 **Sunday 11 December at 3pm:**  
**The BFG** - Cert PG / 1hr 57mins

Based on the book by **Roald Dahl**, **Steven Spielberg's** fantasy adventure tells of 10 year old Sophie an orphan human girl who befriends a benevolent giant, **The BFG (Mark Rylance)**. Their adventure takes them to London to seek the Queen's help in ridding the land of the evil giants. "*Mark Rylance makes Roald Dahl's big softie completely believable in Steven Spielberg's winning adaptation*" - *Mark Kermode / The Guardian*. A treat for the whole family to enjoy! Admission: Adults £5 / U15s £3 / Family ticket £12 (2 adults & 1 or 2 children). **Free popcorn and mince pies.** Doors and licensed bar from 2.15pm.

 **Sunday 8 January 2017 at 7pm:**  
**Florence Foster Jenkins** - Cert PG / 1hr 48mins

In the 1940s, New York socialite Florence Foster Jenkins (**Meryl Streep**) dreams of becoming a great opera singer. Unfortunately, her ambition far exceeds her talent. The voice Florence hears in her head is beautiful, but to everyone else it is simply awful. Her husband St. Clair (**Hugh Grant**) goes to extreme lengths to make sure his wife never finds out how bad she truly is. When Florence announces her plans for a concert at Carnegie Hall, St. Clair soon realizes that he's facing his greatest challenge yet. "*Florence Foster Jenkins makes poignant, crowd-pleasing*

*dramedy out of its stranger-than-fiction tale, with a reliably terrific turn from star Meryl Streep*" - *Critics Consensus*

Admission: Adults £5 / U15s £3. Doors and licensed bar from 6.15pm.

 **Sunday 12 February 2017 at 7pm: Eye In The Sky** - Cert 15 / 1hr 42mins

**Helen Mirren** stars as Colonel Katherine Powell, a UK-based military officer in command of a top secret drone operation to capture terrorists in Kenya. Through remote surveillance and on-the-ground intel, Powell discovers the targets are planning a suicide bombing and the mission escalates from "capture" to "kill." But as American pilot Steve Watts (**Aaron Paul**) is about to engage, a nine-year old girl enters the kill zone triggering an international dispute, reaching the highest levels of US and British government. "*As taut as it is timely, Eye in the Sky offers a powerfully acted, and unusually cerebral, spin on the modern wartime political thriller*" - *Critics Consensus* Admission: £5. Doors & licensed bar from 6.15pm.

### More about ChOC

Charlbury's Own Cinema (ChOC), set up in 2005, is a 'not for profit' Community Cinema run entirely by volunteers. We screen films in Charlbury's **War Memorial Hall**, usually on the second Sunday of each month.

### Donations to local organisations

Net proceeds from the raffle held at monthly film screenings are donated to charities and community organisations based in and around Charlbury. A donation of £100 is made on average every four months. If you would like your organisation to be considered as a recipient, please email [secretary.chocfilms@gmail.com](mailto:secretary.chocfilms@gmail.com) giving contact name, organisation and a brief description of how the donation would be used.

### Assistance to other Charlbury based organisations

Subject to the availability of projectionists, we are happy to assist other organisations in Charlbury. In the first instance requests for assistance should be made by email to: [secretary.chocfilms@gmail.com](mailto:secretary.chocfilms@gmail.com) or by phone to Steve or Jackie on 01608 810713.

Charlbury WI are moving venue from the Cornbury Suite at The Bell over to the Memorial Hall in the new year to accommodate our growing membership (our 40<sup>th</sup> member joined at our October meeting!). Our meeting dates remain the same – 7.30pm on the third Wednesday in the month.

We're now offering lots of extra-curricular activities in addition to our monthly meetings. This autumn we've enjoyed papercutting workshops, visited the Cotswold Gin Distillery, been for a walk and afternoon tea at Batsford Arboretum and joined neighbouring Chadlington and Spelsbury WIs for harvest supper.

Charlbury WI laid a wreath at the Remembrance Day parade this year for the first time.

Everyone is welcome to attend the Charlbury WI Carol service at 7pm on Thursday 8<sup>th</sup> December. We'll be serving mince pies and mulled wine afterwards and the retiring collection will be for SERV OBN (Oxfordshire Blood Bikes) who came to speak to us about their voluntary work at our May meeting.

Look out for our 2017 programmes available in the Corner House and Pharmacy from mid-December onwards.

*What's On (Dec/Jan/Feb)*

Yack & Yarn - 7.30pm, 6 December, The Bell

WI carol service - 7pm, 8 December, St. Mary's

Yack & Yarn – 7.30pm, 3 January, The Bell

WI January meeting: Beetle Drive - 7.30pm, 18 January, Memorial Hall

Yack & Yarn – 7.30pm, 7 February, The Bell

WI February meeting: Make-up Demonstration - 7.30pm, 15 February, Memorial Hall

*Louise Cashman  
Chairman*

Thanks to all who made this year's Street Fair such a success. We will be able to hand over to the Corner House the grand sum of £10,000, which is great! So big thanks to all those people who came out of the blue to make this year's fair happen.

We do have a few people to help with next year's Street Fair, but can always have more so if you are interested in helping, no matter how small, please contact Natasha Ely on [natashaely@outlook.com](mailto:natashaely@outlook.com) to offer your services! If you enjoyed this year's fair, and think well maybe I will offer to help, but then forget to offer, please contact me NOW!

Perhaps you may have some new ideas for Street Fair—we need them in order to refresh it.

We shall be holding a get together meeting on 16 January 2017, probably in a hostelry, so see you all there!

*Natasha Ely*



**POWER CUT?  
CALL 105**

**ABOUT 105**

YOU CAN CALL 105 TO REPORT OR GET INFORMATION ABOUT POWER CUTS IN YOUR LOCAL AREA.

You can also call 105 if you spot damage to electricity power lines and substations that could put you, or someone else, in danger. If there's a serious immediate risk, you should call the emergency services too.

105 is a free service, available to people in England, Scotland and Wales. You can call the number from most landlines and mobile phones. Visit [www.powercut105.com](http://www.powercut105.com) to find out more about the new 105 telephone number and electricity network operators.





## The future of our Post Office service

You may or may not know that, according to Post Office Limited's (POL) Network

Transformation policy,

it will not be possible to continue Charlbury's Post Office service contract on the current basis in 2017. Under the circumstances Elaine Newbold, our current Post Office service provider, has indicated that she wishes to terminate her POL contract with effect from whenever a successor is found.

At the time of writing (early November) POL is advertising the opportunity for a local retail business to take on the Post Office franchise as part of their ongoing business. The advert can be viewed on a special POL website: <http://runapostoffice.co.uk> by typing in our post office's postcode OX7 3PN.

POL are looking for an existing retail business to take on the franchise and run it as an integrated part of their shop - in other words from the same counter as other retail sales, keeping the same hours, using the same staff. Their preference is for a shop that turns over £4k a week but apparently they do have procedures for smaller businesses.

The word "shop" is used but POL may also be willing to consider another type of local business, if it meets key criteria and is a way of maintaining the level of service currently on offer.

The Charlbury Community Action Plan group, have been starting to consider how to follow up the results of the town survey (which will be shared with the community by the end of the year) and representatives of other key local organisations have been working to make local Charlbury businesses, who might be interested in exploring the idea of taking on the Post Office franchise, aware of the advertised opportunity.

Other options for continuing to base a wide-ranging post office service in the town will also be explored.

As far as we are aware POL is committed to maintaining some kind of Post Office service in Charlbury and is keen to work with local representatives. Hopefully a good solution will be found with all the creativity and commitment available in the town.

In the meantime, residents should be clear that it will be important to be positive and to keep on using our current post office service to the full, in order to demonstrate its importance and value to us all.

*Meryl Smith  
Charlbury Community Action Plan Group*



## St. Mary's Church **ANNUAL CHRISTMAS BAZAAR**

Saturday 3rd December  
10.30 - 12 noon

War Memorial Hall

## Late Night Christmas Shopping





# PELLMANS

## Your Local Solicitors

- **Business and Employment Law**

Contracts, Legal Compliance  
and Disputes

- **Property**

Residential, Commercial  
and Agricultural

- **Wills, Probate and Trusts**

Tax Planning and Lasting  
Powers of Attorney

**01865 884400**

**[www.pellmans.co.uk](http://www.pellmans.co.uk)**

**1 Abbey Street, Eynsham, Oxford OX29 4TB**

*Home visits and evening appointments available*



**PROFESSIONAL ARBORICULTURE**

**ALL ASPECTS OF TREE SURGERY  
UNDERTAKEN**

**FULLY INSURED**

**FREE QUOTATIONS**

**T: (01993) 868001**

**[www.jagtrees.co.uk](http://www.jagtrees.co.uk)**

## REFLEXOLOGY



**Lucy Robertson MAR**

**01608 819250 / 07983 673480**

**[info@lucyrobotson.co.uk](mailto:info@lucyrobotson.co.uk)**

**[www.lucyrobotson.co.uk](http://www.lucyrobotson.co.uk)**

Foxmead, Hundley Way, Charlbury OX7 3QU

Carpet and Upholstery cleaning  
by GRIMEBUSTERS,  
Your local Specialists.  
Quality work - Unbeatable rates -  
01993 868 924

## “Charlbury University”

Charlbury is certainly great for organized community fun and frolic. It has festivals, fairs, anniversaries and celebrations aplenty. But there is one anniversary you probably don't know about.

For 25 years, something has been happening that has cheered a whole multitude of Charlburians and lifted them to a sense of wider hope for the future.

Hundreds of Charlbury people have had a part in it.

Many have had visitors stay with them in their homes—almost as part of the family.

Some have even chuckled with amusement at their visitors' “quaint” accents.

Still don't know what anniversary it is? Here are six clues:

- Someone became awesomely known around the town for running all Charlbury's 32 footpaths in one winter.
- Remember when a young visiting musician joined in music all around, and was also a star in pub discussions?
- We could see a dramatic version of Jane Austen's “Pride and Prejudice” put on right here in Charlbury—absolutely free!
- A musician helped lead the music in local churches, flower festivals and singsongs. He made “Put Your Hand in the Hand” his theme song.

- Someone became a star striker for Charlbury Football team, scoring a 3-goal hat trick in his very first game.
- Every spring you could see a costumed Shakespeare play staged in Charlbury by young drama students—some of whom you probably knew.

Have you guessed it? Here's the answer.

25 years ago, the programme sponsored by the Baptist church to bring selected Canadian Christian students venturing into Charlbury to study for the winter university term at Oxford, Stratford-upon-Avon and London first began. At that time, Bill James, Jesse Faulkner and Miles Hardie extended crucial founding, problem-solving and welcoming leadership. Since then, the late Peter Colyer, Madeleine Wheare, Glenna Chadwick and Marion Miles Hardie have modernized the Canadian students' programme into what it is today.

It still continues. You can see a dozen or so young new faces in town anytime this winter, down at the train station and elsewhere. They'll be staying with home-sharing Charlbury hosts somewhere, learning much in many places and getting ready to entertain the town with a dramatic performance at the end of their stay with us.

Give them a smile, if you can, as we have been doing for 25 years—remembering *your* cross-cultural fun when, for the first time, perhaps in a strange place, you ever saw this new-fangled thing called a “duvet” and, unaided, had to change its cover.

*Douglas Mantz*



### “Charlbury U: Insignia Shield”

Here is the original sketch for a “coat of arms” for “Charlbury U”.

Upper left is the centre of the coat of arms blazon for Regent's Park College which is the Oxford University centre of the Canadian programme,

Upper right are the sun's rays as on the coat of arms for the programme's Canadian centre, Crandall University.

Lower left is the Victorian fountain on the Playing Close in Charlbury.

Lower right is a candle traditionally representing knowledge and the transmission of intelligence, wisdom and goodness as light.

This design for “Charlbury U”, as suggested by its students, was re-drawn artistically by Elizabeth Hardie, reproduced in India, and sewn by Eileen Mitchell on college scarves tailor-made by her. For the first two years of the programme, an emblazoned scarf was presented to each Canadian student at a ceremony celebrating the completion of their Oxford study programme in Charlbury.

*Douglas Mantz*



# New Chef/Owner

## Re-Opening 15 NOV

Open every day, bookings online ..  
[www.whitehorse-stonesfield.co.uk](http://www.whitehorse-stonesfield.co.uk)

or Book by Phone:

# 01993 891063

---

## Now Recruiting!

Full and Part time bar and waiting staff

email your C.V to  
[whitehorsestonesfield@gmail.com](mailto:whitehorsestonesfield@gmail.com)

# ON THE UP ....

## Charlbury Community Centre Progress Thomas Gifford Trust, November 2016



### What is happening?

Behind the fencing, a lot has been going on with the construction of Charlbury Community Centre. Around 1,000 tonnes of rock have been removed and trenches dug to create the foundations. These have been filled with crushed stone and the equivalent of over 3,000 wheelbarrow loads of poured concrete, reinforced with 5 tonnes of steel cages.

Cable and ducting trenches for services such as water and electricity have been laid, and the steel 'skeleton' of the building, weighing 80 tonnes will soon be put in place to create the frame. These are major milestones and by Christmas the scale of the building will be seen.

Charlbury Community Centre is a major community asset, with a strong physical presence in the heart of town, so it is quite natural that people might have questions and concerns:

### What about people who aren't interested in sport?

The building has been designed to cater for a variety of interests. While the hall takes up the largest area to suit a wide range of different sports, the remainder of the space is flexible. Outside library hours, possible uses include after-school clubs, reading groups, classes that are not already catered for, meetings and social gatherings. With no steps to navigate, the Centre is totally accessible for people with mobility problems, and there will be disabled-access WCs, baby changing facilities, a buggy park and bike store. Open during the day and in the evening, it can be used as a centre of learning, recreation and wellbeing. Suggestions are welcome (as long as they're legal!).

### With regards to the library, how will it be improved?

Many Charlbury residents worked hard to keep a library in our community, and major funding from Oxfordshire County Council was available to Charlbury for a new library within the Charlbury Community Centre. The Trustees developed the new library to include provision for people with disabilities, wireless internet, computers, a children's area, and new furnishings for which fund-raising is still on-going. The library will more than double in size (with even more space in a separate breakout area), and have capacity for 5,000 books, a third more than currently available. The library will continue to be staffed and managed as at present by the Library Service with the support of volunteers. As part of the vision of Thomas Gifford Trustees, the sports hall will bring in revenue to pay the entire Centre's overheads which will help the library have a sustainable future.

### Who will run the Centre?

Professional staff will take charge of the day to day running of the Centre, paid for from income from the sports hall. A volunteer committee will have overall responsibility and oversee the management of the operation, which will be run on a not-for-profit basis. It will also provide an exciting opportunity for local people to be involved on a voluntary basis by supporting the professional staff in a number of different roles. This will be a great way of developing new skills and meeting people in a dynamic and lively environment. Anyone interested should contact Daniela Jenkins at [danielajenkins@btinternet.com](mailto:danielajenkins@btinternet.com).

## What account is being taken about the environmental impact?

The building is being constructed to the best possible level of energy performance within the budget, which includes triple glazed windows, solar panels, maximum insulation, efficient underfloor heating and mechanical ventilation and heat recovery systems for the sports hall. Southill Community Energy has agreed to provide the solar panels and funding for items to enhance the energy efficiency.

## This is a £2 million project—where is the money coming from?

The land is owned by Charlbury charity, The Thomas Gifford Trust, so no purchase was required. The charity's trustees (all local volunteers) along with the fantastic team behind the Charlbury Community Centre Appeal, have been fundraising for many years and have raised around £1.8million – enough for the main construction of the building.

Many grant applications have been submitted and because there are thousands of charities applying for limited pots of money, there have been many rejections and disappointments along the way. Perseverance has paid off, however, and a major grant (£500,000) was awarded by Sport England, along with funding from Oxfordshire County Council (£350,000) **on condition that it accommodates the new library** and WODC Communities Facilities Funds (£47,500). Grants were also given by other national and local government departments and charitable trusts such as the Garfield Weston Foundation.

The most inspiration and encouragement, however, has come from the generosity within the town - from the Town Council, groups such as the Charlbury Motor Fire Brigade Fund, the Beer Festival, and the private donations of residents which we continue to receive and for which we are very grateful. Above all, the hard work of the team behind the Charlbury Community Centre Appeal with fundraising events supported by local people has raised a staggering £223,000.

There is still work to be done. More money is needed for things like furniture and library shelving. Importantly, funding for external work such as parking, pathways, and landscaping may be provided by the Town Council precept.

## What evidence do you have that the Sports Hall will be used?

Already, provisional bookings are coming in, not just from within Charlbury but from organisations further afield enquiring about availability for regular hires. The level of interest has been outstanding. The Centre will be open for business in less than a year. The trustees of the Thomas Gifford Trust appreciate your patience during the construction phase and for your continued generosity in making the project a reality.

*Marjorie Glasgow  
Chair*

Relax, unwind, read the papers, catch up with friends and colleagues and enjoy some delicious home-made cake along with a steaming cup of Fair Trade tea or coffee at the

### **Font Cafe**

**St. Mary's Church, Charlbury  
10am to 12 noon every Thursday**

For smaller children we provide a play area with toys. There is also a **Traidcraft** stall selling a range of fairly traded foods, crafts and cards.



## So much raised, so much still needed

Charlbury Refugee Action Group has been incredibly busy since we last talked to you. We wish it wasn't true, but the needs are as great as ever. We hope that because the UK and French governments are at last taking some, if extremely limited, responsibility for refugees and asylum seekers in France, we may be able to give attention once again to the situations in Greece, the so-called 'Balkan route', and Italy. We shall see.

Charlbury people have helped raise a lot more money over the summer. In the year we've been going, we have raised about £15k, and also collected lots of food, tents, bedding and the like, mainly for Calais, plus box after box of medical supplies going in monthly containers to Syria.

Since the beginning of May the Quiz'n'Chilli night raised £1059; the Art Café raised £982; a concert in the Baptist church by Strings and Pipes brought in £375 (and the Baptists have since donated a further £768); Alison Pritchard's heroic 'A Feast of the Middle East' raised £893; a MyDonate fundraising site linked to Angela and Jon's visit to the Jungle warehouse in Calais collected £4470 with Gift Aid (including £200 from Charlbury Fairtraders and a surprise £310 from a Burford Crafters' stall and a coffee morning in Burford) -- and people can still chip in at [www.mydonate.bt.com/fundraisers/jonandangela](http://www.mydonate.bt.com/fundraisers/jonandangela).

£150 was raised from Gene Teo Cooke's cookery class; and a further £100 from Charlbury Quakers. Two large personal donations totalled £1125, and two people have created monthly standing orders each of £25.

And we have been following developments in France all the time, sending what you have made possible. The main charities we support have been Help Refugees with their warehouse and kitchens in Calais; Refugee Community Kitchen, an umbrella support group Calais Kitchens; Phone Credit for Refugees (ensuring people can make contact with friends, family and volunteers wherever they land up); and a

charity in Lyon supporting voluntary groups working with refugees living on the streets in Paris. The collection of medical aid for Syria is ongoing (details 01608 811378: please clear out your medicine cupboard now and help us fill the next container!).

We were also privileged to work with Asylum Welcome and Charlbury Cricket Club to give a group of young refugees living in Oxford an afternoon of cricket coaching and a traditional cricket tea, and to help WODC and Witney Refugee Action welcome and furnish homes for the six Syrian families now living in Witney.

Now we have three more big fundraisers you can put in your diary today:

**Sunday December 4: a Tea Concert in the Memorial Hall at 3pm.** Richard Boothby (viola da gamba), founder of the Fretwork Viol Consort, will play works by Telemann, Abel and Lawes. Tickets £10 include tea and cake, from the Post Office and Cotswold Frames (enquiries 01608 811558).

**Sunday January 15: a Tea Concert in the Memorial Hall at 3pm.** A recital by Jane Downer (oboe) and Warwick Cole (harpichord) mainly of works by J.S. Bach. Tickets as above including tea and cake!

**Saturday February 11: Cocktails and Cabaret: a Valentine's Special Night Out. In the Memorial Hall, 8pm till late.** An evening of music, entertainment and cabaret with bar, cheese board, dancing and jazz karaoke. Organised by Rob Hemingway and Liz Soar with the support of Charlbury Speakeasy. (Tickets on sale nearer the time: for information, email [hemingwayrob@hotmail.com](mailto:hemingwayrob@hotmail.com).)

Yes, CRAG's committee puts the fun back into fundraising!

Finally: follow our news at [www.facebook.com/charlburyrefugee](http://www.facebook.com/charlburyrefugee)

If you would like to join the membership/ mailing list for CRAG, please sign up at <http://eepurl.com/bCX1bz> or simply email [charlburyrefugee@gmail.com](mailto:charlburyrefugee@gmail.com) and we'll keep you informed.

Thanks so much for all that you do. Now help us do more!

*Jon Carpenter (Secretary)*

Some people have quite reasonably asked what has happened about the results of the Town Survey and some have also questioned:

- "who are these people on the forum?"
- or "are they people with an Agenda?"
- or "how much does it cost and who pays?"

It is evident that a response is required and we hope the following answers these as best we can.

*Firstly regarding "who pays?" :*

Most of the effort going into this exercise is from volunteers. Where it has been necessary to spend money, for example on printing or data entry or analysis, then this has generally been covered by a grant from central government (via Locality) specifically for the purpose of creating Neighbourhood Plans. Grants have a limit of £8k but can only be used for this specific purpose and a quote and details have to be provided before applying for grants and this can only be done at certain times. Because of grants Charlbury itself has only incurred minimal expenditure on the exercise.

*"Why has it taken so long?" :*

We are in fact surprised by how much time and effort has been required to complete this exercise. It is perhaps worth stressing that most of the effort comes from volunteers all of whom lead pretty busy lives and have limited availability over the seasonal holiday period. It was thought important that the data was entered and analysed independently and an agency was contracted to do this with another independent person (following an invitation to tender process) to undertake some analysis. This was somewhat delayed by the above grant approval

process. The results have now been captured but the exercise of putting them into a form that is digestible, easily understood and can be used as a basis for a plan is far from trivial. Our aim is to present all the data at a public meeting in what we have described as a 'vanilla' form i.e. not selective or skewed by anyone's bias or previously held assumptions. The meeting when it happens is not intended to be simply a one way presentation but will invite comments and be an integral part of the process of subsequently deriving some policies and a plan based on the results. There will of course be further opportunities for public scrutiny after which the Neighbourhood plan (which affects development) will be put to the community in a referendum and, if approved, will become part of the formal framework for planning. There will be a separate Community Led Plan for initiatives planned for the Town Council and community as a whole. Hopefully this explains why it takes so long but we do feel it is important to get it right.

*"Who are involved & do they have their own agendas?" :*

The Neighbourhood Forum is called a "forum" because it welcomes ANY member of the community who wants to contribute and this is as true now as it has ever been. We encourage people to get involved. There is a committee of volunteers and meetings are held every second Thursday in the month at 8pm in the Corner House and all are welcome (although it would help if you advised us of your intended attendance). Minutes and names of committee members are posted on our website and are a matter of public record. We have joint chairs in John Hole and Graham Terry and we have been consistent and insistent that the objective of the committee is to gain and articulate the views of the community regarding Charlbury's future - not pursue any personal agendas. We record any potential conflicts of interest albeit there have only been a few, notably Rushy Bank. To date we believe that we have maintained this approach and have recognised through the process how easy it is to make entirely wrong assumptions about how others feel about issues. The committee are all



volunteers apart from Lucy Crane-Lupton who is paid for a few hours a month to act as project manager/administrator and without whom this would have been a much more protracted exercise.

One recent change following the completion of the survey is that the Neighbourhood Forum has spawned two sub-groups; one concentrating on development/planning issues, targeting the production of the Neighbourhood Development Plan (NDP) ; the other concentrating on community aspirations and initiatives and targeting the production of the Community Led Plan (CLP). The former has a strong Town Council membership because legislation requires the Town Council to be the sponsoring body for a NDP. The NDP group is currently consulting the District Council and other statutory bodies to ensure that what we put in our plan is supported and deliverable. Town Council members also participate in the CLP group.

#### *Survey status :*

The survey had a few problems but in the end we achieved a much better return rate than the average for this type of survey. 554 households responded comprising 951 individuals; this should give some interesting results. We believe, however, that we did not, in all probability, capture views from every section of the community, even though we suspect that some of those that did not respond are perhaps the most disaffected amongst us. Efforts are underway to investigate other ways to try and reach these people so as to find out whether their reasons were lack of interest or grievance, knowledge of

which will help create a caring community led plan that addresses the desires of all areas of the community.

The 'Analysis' that we are doing is not filtering out what people entered. This means the data will be presented in full, but by graphical presentation which will make the answers more readily understood and in some cases categorise entries that apply to a similar topic.

#### *Public meeting:*

Please drop in and see us at the Corner House in the Morris Room 26<sup>th</sup> November between 10am and 3pm or on 1<sup>st</sup> December at 7:30pm in the Memorial Hall for a public discussion of the results. Please come and add your thoughts. If you cannot attend either event but would like to see the report it will be available online on the website from 25<sup>th</sup> November, before the first public event.

It may be encouraging to know that the survey showed 79% positive that Charlbury is "a great place to live" (3% were negative and the remainder neutral or no entry).

We hope this somewhat lengthy update explains better where we stand and we look forward to a big turn-out when the meeting is scheduled.

Please do not hesitate to contact any of the committee if you have any further questions.

Contact details can be found on [www.charlburyneighbourhoodforum.org.uk](http://www.charlburyneighbourhoodforum.org.uk)

*Lucy Crane-Lupton*

## **CHARLBURY MEALS ON WHEELS**

Meals on Wheels prepares and delivers meals on Tuesdays to residents of Charlbury, Chadlington and Stonesfield. **Meals now cost £3 delivered.**

**VOLUNTEERS ARE NEEDED:** Are you new to Charlbury and looking for ways to become involved in the community? This is an important service and relies on local people to drive, or to cook, or to help in any way to keep it going. Please ring Marjorie Glasgow on 01608 810161 or Jan Griffiths on 01608 810440 if you can help. We are also accepting names of new recipients for our waiting list. Please ring Marjorie.



# Friends of Charlbury Library

A big THANK YOU for the donations received so far to purchase items for our new library. If you haven't yet donated but would like to add us to your Christmas list, we would be very grateful. Details are available from the library.

A reminder that Computer Buddy sessions in partnership with Age UK are available at the library. Please phone the library (01608 811104) if you would like to sign up for this excellent scheme.

Zinio, Oxfordshire Library Service's e-magazine provision has introduced BBC Countryfile and the Pokémon Go guide to add to such favourites as The Economist, BBC Good Food, Good Housekeeping, BBC History, Ideal Home and Amateur Photographer. All free to library members.

Christmas/New Year closure will be from the end of the morning session on Saturday December 24<sup>th</sup>, reopening on Wednesday January 4<sup>th</sup> at the usual time.

Thank you, as ever, to all the Library Volunteers and a very Merry Christmas to all our readers!

All good wishes for a happy and healthy 2017.

*Jill Judson  
Chair of the Friends of Charlbury Library*

	
<p>Your body is your vehicle through life and you can maintain or improve its quality through your fitness levels. Fitness is the ability to do what you reasonably want to with your body and is central to your health and well-being. Whether you are relatively inactive or athletic, youthful or elderly, I will prepare a well-balanced personalised programme to help you achieve what you wish for, safely, and in the shortest possible time. I will deliver this programme with a professional and caring attitude. To discuss your needs, please contact:</p>	
<p><b>LOUISE BARNES</b></p>	<p><b>PERSONAL TRAINER</b></p>
<p><b>07879 685579</b> 123dancercise@gmail.com</p>	<ul style="list-style-type: none"> <li>▪ Free initial consultation</li> <li>▪ £45 per hour</li> <li>▪ £10 discount - Train in your own home</li> </ul>
<p>What is your dream?</p>	
<p><i>Please consult a doctor before beginning an exercise programme or increasing your activity levels.</i></p>	<p><i>REPS Approved Personal Trainer</i></p> 

# Charlbury Church Services



Charlbury Baptist Church, Dyer's Hill

Contact: Secretary (01608 810107)  
[charlburybaptistchurch@gmail.com](mailto:charlburybaptistchurch@gmail.com)  
Sunday services at 10.30 am  
Housegroup: Thursdays at 8 pm  
Craft: Tuesdays 2-30 – 4.30 pm  
Nov 27<sup>th</sup> Advent "Mossy Church" 2.30 pm  
December 18<sup>th</sup> 4 pm: take part in the  
Nativity Story. Choose a character and come  
dressed up!

**Christmas Day Celebration at 10 am**

See website / phone for details



St Mary's C of E Church, Church Street

St Mary's Church, Charlbury and All Saints  
Shorthampton  
Full details of all church services are available in the  
Leaflet or in the Church porch.

Vicar – Revd Dr Sally Welch Parish Office (01608  
810230)

[www.stmaryscharlbury.co.uk](http://www.stmaryscharlbury.co.uk)



Friends' Meeting House, Market Street

Meeting for Worship at the Friends Meeting House  
Sunday mornings 10.30am  
For further details contact Paula Dunleavy (01608  
646056)



Methodist Chapel, Fishers Lane

Sunday services at 10.30am  
Further information from Gill Grason (01608 810154)



St Teresa's R.C. Church, Fishers Lane

Sunday Masses: 9am at St Kenelm's, Church Enstone,  
11am at St Teresa's,  
Daily Mass: 9.30am at St Teresa's  
Rev Aldo Tapparo, tel: 01608 810576 or see  
[www.communiGate.co.uk/oxford.stteresacharlbury](http://www.communiGate.co.uk/oxford.stteresacharlbury)

## Churches Together in Charlbury

The five Charlbury churches pray together and then work together to show our Christian concern for the world around us. Since the last issue of the Chronicle we have taken part in the Street Fair, contributing over £200 to the Corner House and Memorial Hall. We have sent gift vouchers totalling £260 to the Syrian refugee families who have arrived in Witney, so that they can buy a few things they need in a local supermarket. Together with the United Nations Association we have helped organise hustings for the Witney by-election. This is something the churches, as a politically neutral body, can do to help the democratic process. And through collections taken at the hustings and at services the following Sunday we raised £650 for the Hurricane Matthew Appeal for the people of Haiti.

At our AGM on 16 October we were pleased to welcome Heather McCulloch from West Oxfordshire District Council who has been given a lead role in helping to settle the Syrian refugees arriving in Witney. She gave us a most interesting talk about the realities of bringing people from a very different background, who have been through harrowing events, into our local community. She emphasised the important role of churches and other voluntary organisations in helping to find suitable accommodation, providing furnishings, taking adults and children to medical appointments and, most important of all, offering practical care and friendship in a bewildering new environment.

Now we have started a new year with Ann Davidson from St Mary's in the chair. We are looking forward to Advent and Christmas celebrations, followed by the Week of Prayer for Christian Unity in January. In Lent next year we are planning a series of talks exploring how churches and individual Christians can learn about and help to protect the natural environment. Climate change, species loss, soil erosion, pollution – these are all potential disasters which threaten life on earth. People of faith have a responsibility to care for the world we live in and this is what we will be seeking to understand in our Lent series in 2017.

## WANTED: PROSPECTIVE ACTORS OF ALL AGES

On Sunday, 18<sup>th</sup> December at 4pm at Charlbury Baptist Church we are having an afternoon nativity service but we need characters to play the parts. We want people (adults and children) to come along dressed as Joseph, Mary, (any volunteers for the donkey?) shepherds, wise people, stars, King Herod, angels, inn keeper – literally *any* character found in the nativity play so that we can act.

It doesn't matter if there are several Mary's and Josephs... everyone will be used in the story. After we have acted out our version of the story, there will be tea and cake (or mince pies) for everyone. Please come and join us... even if you want to be part of the audience.

## St Mary's Christmas Services



Christmas Services:

### St Mary's Church

Sunday 18<sup>th</sup> December 9.45am Nativity Service with Holy Communion  
Christmas Eve 5.30pm Carols by Candlelight  
Christmas Eve 11.30pm Midnight Communion  
Christmas Day 8am Holy Communion  
Christmas Day 10.30am Parish Communion

### All Saints Shorthampton

Sunday 18<sup>th</sup> December 3pm All Saints Shorthampton Carols by Candlelight  
Christmas Day 9am Holy Communion at Shorthampton

Sunday 8<sup>th</sup> January 6pm Worship – join us for contemporary worship

Sunday 22<sup>nd</sup> January 6pm Taize service

Sunday 6<sup>th</sup> February 9am Messy Church at St Mary's – join us for breakfast, messy crafts and a family service.



# Coffee break page

Answers are on page 43

## A Christmas Related Quiz



Compiled by Pat Court

### Song anagrams

1. GI walks dog on scene
2. Antagonist chucks them weepy hunt
3. Do thy evil lyn heath
4. Coffee math youll hail
5. Wiry costumier may wash hers

### General

6. What are you eating if you are eating "March Bread" ?
7. The dragon slayer, St George, was born in Cappodocia. In which modern day country is Cappodocia ?
8. Meri Kirihimete is Happy Christmas in which language?
9. What is *picea abies* ?
10. What kind of water is added to high quality marzipan ?

### Add a letter to the first answer to give a Christmas related second answer i.e. at this time in winter flakes—Now/Snow

11. Heavy breathing at the family entertainment
12. Don't like the fact that you've received a gift
13. Extreme displeasure when in a stall perhaps
14. A grass perhaps using seasonal transport
15. Put your mark on it before having a drink

### Sweets

16. You can't eat them until later
17. They smell lovely
18. Sweet Mus
19. This chap's fruit has gone brown
20. Could be Park Lane or Mayfair

### Dingbats

21	Nigmassht	22	CCCCCC FESTIVE	23	A3 tortilla A4
24	Tofrankuch	25	Hello Spring! Hi Summer! Howdey Autumn! Yo! Winter	26	

# What's On in Charlbury

I have been asked to include a list of "What's On" in Charlbury in the forthcoming three months. It surprised me how much there was! If you would like to include your event in this list, please contact me at [editor.chronicle@outlook.com](mailto:editor.chronicle@outlook.com) just stating your organisation, time of the event, and place of the event.

## December

- 1st—Public Meeting on Charlbury Town Survey, 7.30pm Memorial Hall p.27
- 3rd—St Mary's Annual Bazaar, 10.30am-12noon, Memorial Hall p.20
- 3rd—Town Council Surgery, 10-12pm, Corner House p.35
- 4th—CRAG, Tea Concert, 3pm, Memorial Hall p.26
- 7th—Day Centre Open Morning, Garden Room p.10
- 8th—Parish Poll, 4—9pm, Memorial Hall, p.34
- 8th—WI Carol Service, 7pm, St Mary's Church, p.19
- 9th—Charlbury Society "A Spencer Love Affair", 7.30pm, Memorial Hall
- 10th—Farmers Market, 9am-12pm, Playing Close
- 10th—Corner House Coffee Morning, 9-12pm, Memorial Hall p.10
- 11th—ChOC—BFG, 3pm, Memorial Hall p.18
- 13th—Primary School Carol Singing in Charlbury p.39
- 14th—CAS talk "Local Art Students, 7.30pm, Memorial Hall p.40
- 16th—Late Night Christmas Shopping
- 18th—Nativity Play, 4pm, Baptist Church p.31
- 18th—Benjamin Britten—A Ceremony of Carols, 5pm, St Marys

## January

- 8th—ChOC—"Florence Foster Jenkins", 7pm, Memorial Hall p.18
- 11th—CAS talk "TED Talk", 7.30pm, Memorial Hall p.40
- 13th—Charlbury Society "A Spencer Love Affair", 7.30pm, Memorial Hall p.13
- 15th—CRAG Tea Concert, 3pm, Memorial Hall p.26
- 15th—"Why is Alfred called Great?", 3.30pm, Redding Wyck Hse
- 16th—Street Fair first meeting—in a pub! 8pm.
- 18th—WI Beetle Drive, 7.30pm, Memorial Hall p.19
- 21st—Burns Supper, 7.30pm, Memorial Hall p.2
- 22nd—United Service for the Week of Prayer, 9.45am, St Mary's

## February

- 4th—Town Council Surgery, 10-12pm, Corner House p.35
- 8th—CAS talk "Scottish Colourists", 7.30pm, Memorial Hall p.40
- 10th—Charlbury Society "Heritage Assets", 7.30pm, Memorial Hall p.13
- 11th—CRAG, Cocktails and Cabaret, 8pm, Memorial Hall p.26
- 12th—ChOC—"Eye in the Sky", 7pm, Memorial Hall p.18
- 15th—WI—Make Up Demonstration, 7.30pm, Memorial Hall
- 25th—Pop Up Supper, 7.30pm, Garden Room p.2

## Weekly events

### Monday

- 9.30am—Toddlers Group, Memorial Hall
- 1.30-3pm—Tennis Club

### Tuesday

- 6pm—Bowls Club
- 8pm—Wychwayz Border Morris, Scout Hut

### Wednesday

- 7.45pm—Bell Ringing, St Mary's

### Thursday

- 10-12pm—Font Café, St Mary's
- 7-9pm—Tennis Club

### Friday

- 9.30am—Exercise for 50+, Memorial Hall
- 10-12pm—Corner House Coffee Morning
- 7pm—Choir Practice—St Mary's

### Saturday

- 10-12pm—Tennis Club

### Sunday

- See Sunday Church Services
- 2-5pm—Tennis Club



## Charlbury Town Council report

### Parish Poll and future Council Tax

As described in September's *Chronicle*, the Town Council has been working with the Sports & Social Club to identify opportunities for new premises, and is continuing its support for the Charlbury Community Centre project on the Spendlove site.

Constrained budgets at County and District level and increased competition for third-party grants, mean that funding through the Town Council offers the best chance to finally complete the very long-running Community Centre project and to kick-start a new sports facility at Nine Acres to replace the former S&SC.

The Town Council is therefore proposing to take a £200,000 loan through the Public Works Loan Board, a standard funding mechanism for local councils and one which we have used successfully in the past for improvements to the Memorial Hall and cemetery. This would provide £130,000 for exterior works to the Community Centre, and £70,000 for the new sports project.

Repaid over 20 years, this would equate to approximately £10 on the annual council tax of a property with an average Band D council tax rating (less for lower bands, more for higher). Charlbury Town Council's 'precept' (share of the council tax), at approximately £80 each year, would still be significantly lower than other nearby settlements such as Chipping Norton (£91.84), Leafield (£96.31), Ascott (£120.760) and Witney (£130.52).

The Town Council will only apply for this funding if Charlbury people give it their support. By the time this issue of the *Chronicle* lands on your doorsteps, a public meeting (publicised in the *Leaflet*, on the Charlbury website and on posters) will have been held on 16th November. The next step is a Parish Poll – essentially a 'yes' or 'no' vote – to be held in the Memorial Hall on **Thursday 8th December** between 4pm and 9pm. Please do come and cast your vote.

### Fighting Charlbury's corner

Much of the work of the Town Council is

spent in discussions with other bodies, to make sure that Charlbury – as one of the smallest towns in Oxfordshire – gets a fair deal. There are too many to list here, but we are looking into the options for making more detailed reports available regularly on the Town Council website.

In recent months, we have been in discussion with Great Western Railway regarding the waiting period at the station; at the Spendlove site, we are discussing future options for car parking which could make better use of the space available when the Community Centre opens; and with Oxfordshire County Council we are working to get a 20mph speed limit in the town.

Meanwhile, given the current interest in housing development around the town, the Town Council is drawing up an interim position paper which will communicate our aspirations and concerns to West Oxfordshire District Council (the planning authority) until the Neighbourhood Plan is finalised and agreed.

If you believe there is an area where the Town Council could make a difference, please do let us know by contacting the Town Clerk or at one of the regular surgeries (see below).

### Permissive paths

The permissive path across Nine Acres Recreation Ground will be closed all day on Wednesday 4th January 2017. We understand that the Wychwood Project will be closing the permissive paths across the Wigwell Nature Reserve on the same day.

### Streets and paths

As the autumn draws to a close, please take a few moments to check your boundaries and cut back overhanging branches and excessive growth so that the pavements are kept clear for pedestrians. It would also be a great help if you could sweep up fallen leaves outside your homes as wet leaves can become a major hazard, particularly to those who are older or infirm.

Then, as winter approaches, be aware of the hazards of icy pavements and roads. Please look out for any of your neighbours who may find it difficult to get out and about in such weather. The salt bins are now full and the town council does also have a further supply of salt available, so if you become aware of bins becoming empty



during severe weather, please contact the Town Clerk for replenishments. (This salt is, of course, only for use on the public highways and pavements.)

As at all times of the year, we remind dog owners to “scoop it, bag it, bin it”; and in the interests of the health of all, especially children, please respect the notices prohibiting dogs from the Playing Close, and keep them on a lead in public spaces such as Nine Acres. Thank you.

### In brief

- We are working to improve the surface on Watery Lane and make this a more enjoyable walk. The work will be funded by a grant from the Cotswold AONB’s Wardens’ Countryside Fund and is expected to take place in spring.
- Congratulations and thanks to all those involved with organising and staging this year’s Street Fair.
- Cllr Natasha Ely laid the Town Council’s wreath at the War Memorial in St Mary’s Church on Remembrance Sunday, 13th November.
- The waste/recycling collection calendar for 2017 can be downloaded from [www.westoxon.gov.uk/waste](http://www.westoxon.gov.uk/waste); you can request one by calling 01993 861000; and you can pick up a copy at the WODC shop on Welch Way, Witney, or from the Guildhall in Chipping Norton.
- And, of course, Charlbury Town Council wishes everyone in the town a Merry Christmas and a very Happy New Year.

### Contacting your Town Council

All council meetings are open to the public. Full council meetings will be held in the Corner House at 7.30pm on Wednesday 23rd November and 21st December, with planning meetings two days before (8pm unless there is a speaker).

The next open ‘surgeries’ will be in the Corner House from 10am–12pm on Saturday 3rd December, 4th February (tbc) and 1st April (tbc).

You can email Roger Clarke, the Town Clerk, at [charlburytc@btinternet.com](mailto:charlburytc@btinternet.com) or phone 01608 810608 (9am–5pm weekdays, not weekends or bank holidays).

*Richard Fairhurst*



---

### From County Councillor Rodney Rose

07919 298277 [rodney.rose@oxfordshire.gov.uk](mailto:rodney.rose@oxfordshire.gov.uk)

---

With Christmas in prospect, most of us have turkey, Xmas pudding and family gatherings in prospect. But for the County Council Cabinet and finance teams, it has become in the last few years a time of increased workload and “pencil-sharpening”.

The Chancellor’s Autumn Statement has been released later and later, and has become the week before the Christmas break, when in earlier years it had been given out in the last week of November. Late December leaves little time to make any changes directed by the Autumn Statement as the £500 million revenue budget of the Council must be in place by the first week of February, ready for the Annual Budget Meeting a week later.

It is illegal for a council to borrow to balance the books, or to go “overdrawn”. Cuts to local government finance have figured heavily in recent years, but let us hope for a small reprieve this year, and more time to work the figures before the Xmas break!

Another announcement we expect to release around the New Year will be the County Council’s submission to the Secretary of State for Local Government on reform to local government in Oxfordshire. This will be a bid for a single Unitary Council for Oxfordshire, with our suggestions on ensuring that local decision making will also happen for those areas where a centralised “committee” is not appropriate for small but important issues in Charlbury and Wychwood.

A happy turkey, Xmas pudding and Christmas to all, and the very best for 2017.

*Cllr Rodney Rose*



As you will know, much of the past few weeks has been taken up with the by-election for the Witney parliamentary seat, in which I was the Liberal Democrat candidate. I achieved the best ever result for the party, with just over 30% of the vote, up by 23.4% on the general election result.

A strong vote came from people in Charlbury, Finstock and Fawler, and I would like to offer my grateful thanks to everyone for your incredible support. I would of course have welcomed the opportunity to be your Member of Parliament, but I still represent one of the loveliest wards in the area. I am always available to help with any issues that you may have, and look forward to doing so for many years to come.

Just before the election, I visited Enstone Airport with several WODC officers, including planning officers. We inspected several possible sites for a Dean Pit replacement. The best site we identified is one that could be easily accessed from the B4030, which is a reasonably wide and safe road. The officers felt that there would be no reason to turn down any proposal for this site and have gone away to discuss it with the owners and to revisit the proposal that was put together for the site at Greystones. As I write, I am waiting for the officers to come back to me but it looks promising and I hope that by the time the next Chronicle is published, there will be further progress to announce.

My best wishes to everyone for Christmas and the New Year.

*Cllr Liz Leffman*

### **The home front WW1**

By 1916 the army was short of men as the supply of volunteers dried up and casualties mounted. Conscription was introduced early that year and all fit men between the ages of 18 and 41 were liable to be called up. As more men left the town, Charlbury's farms and businesses suffered from lack of manpower. Among those who went to the front were farmers, a blacksmith, farm labourers, glovers, postmen, butchers, a saddler and other tradesmen. Businesses were struggling to manage without so many of their workers.

Men could apply for exemption from military service and their cases were heard by Military Service Tribunals. Those unhappy with the tribunal's decision could appeal on one of four main grounds: work of national importance, business or domestic hardship, medical unfitness, or conscientious objection. Only a very few men were given full exemption – Percy Holloway of Waterman's Lodge farm and Mr Nixey, miller on Dyer's Hill, were two rare cases. Many appeals were dismissed or the men given a conditional exemption for a few months.

Even if an exemption was granted, the military could appeal against the decision, often successfully. Local shop keepers received fairly short shrift and many in Sheep Street, Church Street and Market Street had to go to war, some in their late 30s. Local farms and businesses had to learn to cope with much less man-power than before.

Some employers applied on behalf of their staff, desperate to keep their businesses going. Many glovers had gone to war and the local industry was suffering. Early in 1917, one firm applied for exemption for a key employee. The Oxford Times reported 'Joseph Rawlings, single, Thames Gardens, Charlbury, leather glove cutter, employed by Messrs Dyke, Boots & Farmer was the only glove cutter left in the firm. There were 7 men,

two boys and 40 women employed by the firm, which had over 7,000 dozens of gloves on order, a few of them for export to France for the motor transport forces of the French Army.' Joseph was given conditional exemption which the records show was renewed at intervals right up until the end of the war. The firm of Burt & Shire claimed that if they lost their glove-cutter, fifty people would become unemployed. At the fourth hearing the military agreed that the work was of national importance, but only a temporary exemption was allowed.

Life was hard on the local farms too. One farmer whose work force had halved due to the war appealed on behalf of his cattleman. 'The farmer stated that the man was married, with two children and his wife was a cripple. The farm was 130 acres, 110 of which were arable. He had 10 head of cattle and five working horses. He had three men in his employ. It was almost impossible to get the threshing done at Charlbury owing to the shortage of labour. He said one might as well try to get the moon as get a Charlbury boy for a shilling a day. There were six men on the farm before the war.'

Frederick Hurst was a master blacksmith, 40 years old in 1917 when he was called up, and was the only man able to do agricultural repairs in the area. He was originally given a conditional exemption but this was overturned by the military and he served in the RAF for the last year of the war.

By the end of the war, the country had enlisted some 49% of men between the ages of 15 and 49 for military service in some capacity, a staggeringly high figure. Somehow the local people managed without them – most of the businesses seem to have survived until 1918. Women took over some of the roles and men probably came out of retirement to help.

*Work is nearly complete on the museum's latest book, 'Charlbury during the First World War', which will be out soon. The Museum is closed until Easter next year.*

*New stewards are always welcome to help staff the museum when it is open. Do think about joining us next year. If you are interested, please contact [charlburymuseum@elmstead.plus.com](mailto:charlburymuseum@elmstead.plus.com)*



*Staff of Fownes Ltd, glove makers. The factory was off the Ditchley Road, later used as the Youth Hostel.*



The CSA is very pleased to be able to support the school in the development of the woodland area

and playground refurbishment. This initiative began at least a year ago when the CSA asked the staff to identify a project that could act as the focus for fundraising. Since then, teaching staff and children have thought carefully about the use of the space and the equipment they would like to purchase to enhance the outdoor area. The woodland area has been prepared, new grass sown and fencing put up to create different spaces for play. Funds raised by the CSA during the past year will soon be spent on some of the equipment chosen and it is hoped that this will give the children much pleasure. There is still work to do to raise enough money to fulfill the wishes of the children, the school staff and the CSA, but it is certainly satisfying to see the progress that has been made on this project to date.

The summer saw the departure of Carolyn Ashton as one of the CSA committee

treasurers. Carolyn's tireless efforts to support fundraising for the school and her creative ability to plan games for the children at a wide range of events will be greatly missed. The CSA committee is very pleased to have welcomed Shelley Parsons who has since taken on this role.

Fundraising continues and a recent collection by "Phil the Bag" saw parents bring bags of clothes to school for recycling. Funds were contributed to the CSA based on the weight of the textiles collected. The CSA is also very grateful to Tina Piotrowsky for funds that were raised from ticket sales at the children's summer dance show, as always, an event that creates much excitement amongst children and parents. Other events that are being planned this term include a Bangers and Mash supper quiz and a winter fair. It is hoped that these events will be well supported and reported on in the future.

As always a big thank you to all those who give their time to plan, support and attend the events with their children.

*Tara Midgen  
CSA Chair*

Goodbye Weeds

Cheerio

'See ya'

Prices from  
**£15** \*per quarter

'B'Bye!'

'Toodle-pip'

'So long'

With prices from as little as £15\* per quarter for providing a great service, is it any wonder that 40% of our new customers come to us through recommendation.

Hello Beautiful Lawn

**So, call today for your FREE lawn analysis:**  
**01869 345333**

\*Prices based on a lawn with up to 60%\*

Two hundred children were welcomed back this September and our youngest pupils in Foundation Stage and Year 1 arrived to find shiny new classrooms. While the children enjoyed their summer holidays, these areas of the school premises were refurbished with new paint and carpet tiles, and brand new child-friendly zones for reading, maths and creative writing. Staff created a new library and art area in our 'My Time' room, which doubles up as our Early Birds Morning Club. This club provides parents with the flexibility to drop pupils off from 8.00am and the children love coming to read, complete homework, practise spellings or play games in this cosy space.

We value very highly communication with parents and since the start of term have held class information evenings for all parents. These have proved invaluable in informing parents of their child's subject matter and curriculum for the year. They really help the school and parents work together for the benefit of the children.

The children have been very busy since September. Here are some of the highlights so far. Year 6 completed their annual Yenworthy visit – this four night residential trip is a fantastic opportunity for our oldest children to learn outside the classroom, develop their independence and have unique experiences in the great outdoors of Exmoor. Our Foundation Stage and Year 1 children walked all the way up to Banbury Hill Farm and back carrying their own lunches in rucksacks. Whilst there they went on a woodland scavenger hunt, looked at the farm animals and played on the lovely new play equipment.

Pupils in Years 3 and 4 were 'evacuated' to the Steam Museum in Swindon. Dressed in 1940s style clothing with gas masks and identity labels, they took part in various war time activities and ate their grease-proof paper wrapped sandwiches!

The children also love to be part of the wider Charlbury community and have already participated in several community events this academic year. The school choir sung at the Street Fair and then again on Nine Acres to mark the start of the ground breaking ceremony for the new Community Centre. Children who attend after-school dance classes with Tina gave another incredible performance at the Street Fair, attended by a huge and appreciative crowd. And many children put on their aprons and entered the school's own version of 'Bake-off', baking fantastic cakes in order to raise money for Macmillan. Parents, grandparents and anyone with a sweet tooth attended the coffee afternoon and together we raised a fantastic £554.48 for Macmillan. A new event for us will be carol singing in the town on Tuesday 13<sup>th</sup> December – pupils, parents and interested members of the community are more than welcome to join in. Details will be on the school website ([www.charlbury.oxon.sch.uk](http://www.charlbury.oxon.sch.uk)) as the date approaches.

A final note to any prospective new parents: towards the end of this year we will again be conducting open mornings for parents whose children are due to start in Foundation Stage in September 2017. If you'd like to make an appointment to see the school, please contact Mrs Westbury in the School Office at 01608 810354.

*Suzie Williams & Catherine Ball*  
*School Governors*

## **CORNER HOUSE AND MEMORIAL HALL**

Office: 01608 810879

Office hours: Mon 9.30am - 11.30am; Wed & Sat: 9am to 12 noon  
(closed first Saturday of every month)

Emergency Contact: Steve Andrews (01608 811212)



Many parents, some ex-pupils and former staff joined us in

October to bid farewell and thanks to Jan Stubberfield for her dedicated management of the Pre-School over the past 18 years. Chris Weston has now taken over management of the Pre-School and we are excited to help her continue the Pre-Schools' excellent provision for children.

We have places available on all days for our sessions. There are excellent extra activities being offered with singing, tennis and dance all offered within the setting.

We are currently undertaking a trial period with younger two year old children joining the setting for one day a week, watch this space for news on how this new possibility develops.

The Pre-School will be raising money over Christmas by selling beautiful hand made decorations for your tree - some of you may have seen us at the November Christmas Sale in the Memorial Hall. We will be at the Christmas Farmers' Market hosting a festive cafe in the centre of the Playing Close so pay us a visit to warm your hands, enjoy a slice of cake before picking some ornaments to take home. We also hope to have some decorations on offer at the Burroughs' Christmas Tree Farm.

Soon preparations will begin for the celebration of the Pre-School's 40th birthday in the summer of 2017. If you would be interested in helping the committee mark this memorable event for the whole community please get in touch.

And finally, don't forget the Pre-School can be hired for children's parties (up to the age of 10), or for any adult activity with an educational purpose.

If you are interested in visiting the setting, enquiring about our sessions or hire possibilities please ring 01608 811200 or email [admin@charlburypreschool.org.uk](mailto:admin@charlburypreschool.org.uk)

*Jody O'Reilly*

---

## Charlbury Art Society

---



All meetings will be held on the second Tuesday of each month at the Memorial Hall in Charlbury, commencing at 7:30pm sharp.

Free for members, with a small donation from visitors. Refreshments are included. Information about the Society can be obtained from Kati Eidenbenz on 01608 810911, or you can find out more on the Society's website.


CAS' Christmas meeting will take place at the Memorial Hall on **December 14** when local art students will show and talk about their work: Megan Hemsworth is in the midst of her BA in Fashion Photography, Falmouth; Clare Taylor has an MSc in Medical Art from Dundee; and Luke Daniels has a BA in Illustration from Oxford Brookes University. Their presentations will be followed by Christmas drinks and discussion.

On **January 11**, CAS will present a TED Talk, when Patricia Freeman will give a short talk on silversmithing; Linda Mowatt will tell us about her plaited baskets, and wood sculptor George Lewis will explain the techniques he employs to make his wonderful sculptures.

At CAS's **February 8th** meeting Alice Foster, a very well-known local art historian, will talk on The Scottish Colourists, again 7:30pm sharp in the Memorial Hall. All other details as above. If you would like to attend most of these monthly meetings held on the second Wednesday evening of each month, perhaps you will find it easier and cheaper to join the Society. Current membership is still only £10 yearly, and you can participate in the many painting days, workshops, trips to out-of-town museums and galleries as well.

*Lee Belcher*





Time to  
enjoy  
older age

## The Old Bakehouse

West End, Chadlington, Chipping Norton, Oxon OX7 3NJ

We offer Supported Housing in a safe environment for older people who no longer want the responsibility and worry of maintaining their own home

**Now available:** a private, single room en-suite

- on-site House Manager
- home-prepared meals
- 24 hour support available when you need it
- a calendar of social activities
- fully inclusive fees

Call us on **01727 737978** or email  
[eastenquiries@abbeyfield.com](mailto:eastenquiries@abbeyfield.com)  
for more information

[www.abbeyfield.com](http://www.abbeyfield.com)

Registered in England and Wales, Company No 574616,  
Charity No. 200719, HCA No. H1045



**Abbeyfield**  
Making time for older people



## TEA and THE THIRD SUNDAY TALKS

### *Why is Alfred Called Great?*

a talk given by Suze Mathews, Early Medieval historian

**Sunday 15 January at 3.30pm**

Everyone is most welcome to come for tea at 3.30pm at Redding Wyck House, (The Old Glove Factory) Market Street, Charlbury OX7 3PJ and at the Quaker Meeting House opposite for the talk and discussion at 4.00pm.

Third Sunday Talks are given in aid of Cecily's Fund, educating Zambian children orphaned by AIDS. This charity, based in Witney, was founded by Alison and Basil Eastwood and is celebrating its 20th year. A donation of £10 would be much appreciated.

Enquiries to Alison Eastwood  
[stableyardalison@gmail.com](mailto:stableyardalison@gmail.com) 07870 893223, 01608 811651



## Charlbury Amateur Dramatic Society

Season's greetings to one and all, this always sound odd saying this as I'm actually writing this in mid Oct but that's deadlines for you.

So let's see where was I... ah yes, well here at CADS HQ we have seen another year fly past and it's seemed to be busy as always. At the moment of writing we are busy preparing for our autumn production "Merry Wives of Windsor" by William Shakespeare, directed by our very own John Hole, and trust that for all those that came to see it had a enjoyable evening out and thank you for supporting CADS; we do really appreciate it.

This time last year I reported that two of CADS members had been signed up to be extras in a big budget film; well at long last the film has been released under the title of "Bridget Jones's Baby" and if you get the chance to watch it do keep an eye out and you never know who you might see on the big screen.

Over the last year CADS have had great fun putting on the likes of *Dancing at Lughnasa*, organising coffee mornings, treasure hunts, BBQ's and skittle evenings and hope that the coming year will be just as busy and as much fun. We would love you all to become involved so if you have ever fancied giving it a go on stage, or behind the scenes, please do get in touch you would be most welcome.

CADS are a theatre group serving Charlbury and its surrounding villages. We're always actively seeking new members - especially if you are interested in working back stage. Please contact the Chairman or any member to find out more. Check out our Facebook page and our page on the Charlbury website for up-to-the-minute news. email: [charlbury.drama@gmail.com](mailto:charlbury.drama@gmail.com); website: [www.charlbury-drama.com](http://www.charlbury-drama.com)

Tim Widdows  
CADS Chairman

**We've got just the thing to make you feel better.**



**Why not look after someone's dog while they're away?**

### Become a host with Barking Mad

It's great fun, all of the benefits of dog ownership without the emotional or financial commitment. We carefully match dogs to your home.



Jeannie & Amanda

T: 01865 922004 M: 07985 766868

E: [oxon@barkingmad.uk.com](mailto:oxon@barkingmad.uk.com)

[BarkingMad.uk.com](http://BarkingMad.uk.com)



# Christmas waste and recycling information

## Collection dates:

Normal collection	Revised collection
Monday 26 Dec	Wednesday 28 Dec
Tuesday 27 Dec	Thursday 29 Dec
Wednesday 28 Dec	Friday 30 Dec
Thursday 29 Dec	Saturday 31 Dec
Friday 30 Dec	Tuesday 3 Jan
Monday 2 Jan	Wednesday 4 Jan
Tuesday 3 Jan	Thursday 5 Jan
Wednesday 4 Jan	Friday 6 Jan
Thursday 5 Jan	Saturday 7 Jan
Friday 6 Jan	Monday 9 Jan
Monday 9 Jan	Tuesday 10 Jan
Tuesday 10 Jan	Wednesday 11 Jan
Wednesday 11 Jan	Thursday 12 Jan
Thursday 12 Jan	Friday 13 Jan
Friday 13 Jan	Saturday 14 Jan

Garden waste collections will be suspended from 25 December - 9 January. Normal collection dates resume Monday 16 January 2017.

### Tis the season to be aware of recycling:

Once the gifts have been opened, the mince pies eaten and the needles are dropping from your tree, don't forget that most of your Christmas waste can be recycled!

### Extra recycling

Leave in open cardboard boxes or clear bags on your collection day. (Glass must go in your recycling box).

### Extra food waste

Leave out your kitchen caddy for weekly collections too.

### Christmas tree recycling

From 10 January, **Real** Christmas trees, holly, ivy and mistletoe can be put out as garden waste. (Remove decorations, pot, wire etc.). You don't need to be signed up for garden waste collections - simply leave out on your green collection week. Trees over 4ft/120cm must be cut in half.

For more information, visit [www.westoxon.gov.uk](http://www.westoxon.gov.uk) or call 01993 861000.

14. Sedge/sledge	1. Good King Wenceslas
15. Brand/brandy	2. When Santa got stuck up the chimney
16. After Eight's	3. The Holly and the Ivy
17. Roses	4. Oh come all you faithful
18. Sugar mice	5. We wish you a merry Christmas
19. Terry's Chocolate Orange	6. Marzipan
20. Quality Street	7. Turkey
21. Midnight Mass	8. Maori
22. Festive Season	9. Norway Spruce
23. Wrapping Paper	10. Rose Water
24. Frankincense	11. Pant/panto
25. Season's Greetings	12. Rent/present
26. Snowball	13. Anger/manger

## Coffee Break answers



Spendlove Centre, Charlbury, OX7 3PQ  
[www.hooknortonvets.co.uk](http://www.hooknortonvets.co.uk)

## CHARLBURY

T: 01608 811250

### Appointments:

8.00am - 9.30am (Mon - Fri)

4.30pm - 6.30pm (Mon - Fri)

10.30am - 11.30am (Sat)

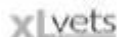
### Opening Times

8.00am - 6.30pm (Mon - Fri), 10.00am - 12.00pm (Sat)



## 24-Hour Emergency Service

In the event of an emergency all telephone numbers will transfer to the 24 HOUR EMERGENCY SERVICE



Excellence in  
Veterinary Care



Royal Mail



Twitter & Facebook



YouTube



LinkedIn

Main Hospital - Hook Norton

Equine, Farm & Accounts T: 01608 730005 (option 1)

Small Animal T: 01608 730501 (option 2)

Branch Surgery, Beddington

T: 01608 337732

# COMPUTER HELP

**Broadband and Wireless. Installation and Training.  
Problem solving. Jargon-free advice. Upgrades.  
Digital Photos. Virus Protection and Removal.**

*Call or email me, Len Kehoe*

*- Computer Science graduate  
with over 30 years experience*

**phone: 01993 810125**

**mobile: 07944 877437**

**email: [thepcbuddy@gmail.com](mailto:thepcbuddy@gmail.com)**

**web: [www.thepcbuddy.co.uk](http://www.thepcbuddy.co.uk)**



## Walking with the Cotswold Voluntary Wardens

The following walks are a reasonable distance from our villages. Some are on the doorstep whilst others involve some travelling. The walks vary in distance and difficulty so you can choose something to suit your ability. Sorry but dogs are not allowed on walks with the Cotswolds Voluntary Wardens.

All walks are led by the Cotswolds Voluntary Wardens and as such are not "just a ramble in the countryside". The themed walks are a way of understanding and appreciating our Cotswold landscape. A full list of walks for the Autumn/Winter 2016/17 can be found on the website [www.escapetothecotswolds.org.uk](http://www.escapetothecotswolds.org.uk) or in a copy of the Cotswold Lion, available in various locations.

### A Brailes Trio

Thur 8<sup>th</sup> Dec—moderate 6 miles

This is a delightful walk in the Warwickshire area of the Cotswolds AONB with far reaching views across a patchwork of farmland. Optional pub lunch at the end of the walk

Start 10:00am at The George, Brailes OX15 5HN

### Short in Distance – High in Interest

Fri 6<sup>th</sup> Jan—easy 4.5 miles

The pleasant village of Churchill is tucked away in the far west of Oxfordshire not far from Chipping Norton. The village was home to two famous people who have left their mark in different ways. A lovely interesting walk and, weather permitting, far reaching views over the Evenlode.

Start 10:00am. Please park thoughtfully near the church in Churchill

### The Rollright Stones

Tuesday 10<sup>th</sup> January—moderate 7 miles

The Rollright Stones, located on a prehistoric trackway, were a sacred place for our ancestors from around 3,000BC. The purpose of the King's Stone still eludes us but The King's Men stone circle was a meeting place. Please bring a packed lunch.

Start 10:00am please park tidily in the village near the manor.

### A Visit to Wolf Hall Mr Rochester?

Wed 25<sup>th</sup> Jan—moderate 10 miles 5 hours

From Adelstrop to Chastleton, Oakham Hill and Salford, returning via Cornwell and Daylesford Hill Farm. With literary and TV connections, an historic house and architectural interest. Possible pub stop at lunch but please bring a packed lunch.

Start 10:00am Adelstrop Village hall [£1 donation] GL1 2LZ

### Hiking through History – Life in the Neolithic Cotswolds

Sun 29<sup>th</sup> Jan 2017 10:00am—strenuous - 12 miles 6 hours

Discover the Neolithic on this walk in the Evenlode Valley. Please bring a packed lunch.

Start 9:30am Ascott under Wychwood. Please park tidily near the school.

### Be There Witches Here?

Tuesday 21 February—moderate 5 miles

On the A3400 between Chipping Norton and Shipston on Stour. A circular walk exploring the hills around the village of Long Compton which includes some steep ascents and descents.. Optional pub lunch at the end of the walk.

Start: 10.00am The Red Lion Inn, Long Compton

## Salon Copenhagen

3 Pendle Court, Pond Hill, Stonesfield OX29 8PZ  
Telephone (01993) 891101

### Unisex hairdressing salon in Stonesfield

*We are a Wella and Tigi appointed salon and all aspects of hairdressing are undertaken*

*Ladies, gentlemen and children catered for Sally, Donna & Cheryl, our professional stylists, offer styling treatment and advice We now offer ear-piercing and our nail bar is open for manicures, pedicures and Gelish Polish*

*A modern salon with the latest techniques*

*A friendly and welcoming atmosphere awaits you*

## AIRPORT TRANSFERS WITNEY SHUTTLE

WE OFFER A FRIENDLY, PROFESSIONAL & RELIABLE, DAILY SERVICE FROM CHARLBURY TO HEATHROW IN OUR CLEAN & COMFORTABLE VEHICLES

Please call or email for our reasonable rates  
info@witneyshuttle.com  
0800 043 4633/01993 705993

## 50+ LOW IMPACT AEROBICS CLASS

**Low impact exercise can improve your health and fitness without stressing your joints.**

**Every Friday morning from 9.30 to 10.30am. in the Memorial Hall, Charlbury.**

**£4 per class. Turn up on the day or phone Sue on 07745 501364**

## Frabjous Books

design and typesetting

Professional layouts for

**AUTHORS, SOCIETIES AND PUBLISHERS**

FRIENDLY ADVICE • SPEEDY SERVICE • COMPETITIVE RATES

01993 868048 / 07586 375908

email: val@frabjousbooks.com

Books • Journals • Newsletters

www.frabjousbooks.com

## Oxford Lime Mortar

### Repointing - Plastering



Specialist repairs to older buildings using traditional lime products

**JOHN GUEST**  
**01865 373273 / 07788 577351**  
**www.olmuk.com**

# CHARLBURY COMMUNITY DIRECTORY

Please note that it is the responsibility of each organisation listed  
in the Community Directory to notify any changes to the Editor

**Artweeks** - Maureen Sparling (01608 810025)

**Baptist Church** - Kay Colyer (01608 810107)

[charlburybaptistchurch@gmail.com](mailto:charlburybaptistchurch@gmail.com)

**Charlbury Amateur Dramatic Society (CADS)**

Tim Widdows [charlbury.drama@gmail.com](mailto:charlbury.drama@gmail.com)

[www.charlbury-drama.com](http://www.charlbury-drama.com)

**Charlbury Art Society (CAS)** Sec: Kati

Eidenbenz (01608 810911)

[secretary@charlburyarts.co.uk](mailto:secretary@charlburyarts.co.uk)

**Charlbury Beer Festival** - Jim Holah

[jimholah50@yahoo.co.uk](mailto:jimholah50@yahoo.co.uk)

[www.charlburybeerfestival.org](http://www.charlburybeerfestival.org)

**Charlbury Beer & Wine Circle** - John Moore

(01608 810700)

**Charlbury Bowls Club** - Secretary, Heather Hill -

(01608 810229)

**Charlbury Bridge Club**— Secretary Monica

Wilkinson (01608 810560)

**Charlbury Canoe Club** - Hugh Belshaw

(01608 810130) [hughandjoan@uwclub.net](mailto:hughandjoan@uwclub.net)

**Charlbury Chronicle** - Susie Finch (01608

810861) [editor.chronicle@outlook.com](mailto:editor.chronicle@outlook.com)

**Charlbury Community Centre Appeal**—Tanya

Stevenson [billandtanya@outlook.com](mailto:billandtanya@outlook.com)

**Charlbury Cricket Club** - David Horne Vice

Chairman [dw3horne@yahoo.co.uk](mailto:dw3horne@yahoo.co.uk)

[www.charlburycricketclub.co.uk](http://www.charlburycricketclub.co.uk)

**Charlbury Day Centre** - Bob Tait (01608 810150)

**Charlbury Evergreen Club** - Ken Taylor (01608

811441)

**Charlbury Green Hub** - Christine Elliott

(01608 811057) [www.charlburygreenhub.org.uk](http://www.charlburygreenhub.org.uk)

**Charlbury Fairtraders** - Cara Williams (01608

811284) [cara@michaelcara1965.plus.com](mailto:cara@michaelcara1965.plus.com)

**Charlbury and District Garden Society**

Geoff Clifford (01608 811006)

**Charlbury Ladies Luncheon Club**—Gill Grason

(01608 810154) and Frances Canham (01608

811176)

**Charlbury Morris** - Peter Smith (01608 811007)

[peter@charlburymorris.org](mailto:peter@charlburymorris.org)

[www.charlburymorris.org](http://www.charlburymorris.org)

**Charlbury Museum** - Celia Faulkner (01608

810656)

**Charlbury Open Gardens** - Eileen Kenrick

(01608 811021)

[csggardens@charlburystreetfair.org](mailto:csggardens@charlburystreetfair.org)

**Charlbury Music Class** - Peter Fry (01993

359189)

**Charlbury Pioneer Country/Western Club**

(Ray & Margaret) (01993 831345)

**Charlbury Pre-School**—Liz Gupta

[lizwoz@hotmail.com](mailto:lizwoz@hotmail.com) (01608 811200)

**Charlbury Royal British Legion** - Nick Potter

(01608 810388)

**Charlbury School** - Jane Holt, Head (01608

810354) [office.2100@charlbury.oxon.sch.uk](mailto:office.2100@charlbury.oxon.sch.uk)

[www.charlbury.oxon/digitalbrain.com](http://www.charlbury.oxon/digitalbrain.com)

**Charlbury School Association** - Tara Midgen

[office.2100@charlbury.oxon.sch.uk](mailto:office.2100@charlbury.oxon.sch.uk)

**Charlbury Scouts & Guides** - Ron Smith

(01608 811362) [rsmith3411@aol.com](mailto:rsmith3411@aol.com)

**Charlbury Society** - Secretary Susan Merry  
(01608 811022)

**Charlbury Street Fair** - Secretary Susie Finch

(01608 810861) [susanna\\_finch@hotmail.com](mailto:susanna_finch@hotmail.com)

**Charlbury Tennis Club** - Mark Jarman

(01608 811692) [charlburytennis@hotmail.co.uk](mailto:charlburytennis@hotmail.co.uk)

**Charlbury Town Council**—Roger Clarke, clerk

(01608 810608) [charlburytc@btinternet.com](mailto:charlburytc@btinternet.com)

**Charlbury Town Football** - Keith Claridge

(01608 810201 or 07870 426707)

**Charlbury Town Youth Football Club** - James

Ball (01608 810270) [jolliecat@btinternet.com](mailto:jolliecat@btinternet.com)

**Charlbury Women's Institute** - President -

Louise Cashman (01608 676995)

**ChOC Cinema** - Richard Cocks (01608

810032)

**Corner House and Memorial Hall** - Office

(01608 810879)

**Churches Together** - Rosalind Scott, (01608

810562) [rosalind.scott@hotmail.co.uk](mailto:rosalind.scott@hotmail.co.uk)

**Cotswolds Voluntary Wardens** - Harriet

Baldwin (07779 157410 or 01608 811718)

[akanidi90@gmail.com](mailto:akanidi90@gmail.com)

**Dementia Friendly Charlbury**— Meryl Smith

(01608 810192) [charlburydf@gmail.com](mailto:charlburydf@gmail.com)

**Fourshires LETS Group (skill swaps)**

Ann/David Morton - (01608 676302)

**Friends Meeting House:** Angela Kyte (01993

880368)

**Holiday Club** - Sue Holiday (01608 810694)

**Macmillan Cancer Care** - Liz & Bob Tait (01608

810150)

**Methodist Chapel** - Gill Grason (01608 810154)

**Mind in Chipping Norton** (Mental Health

Support) (01608 645296)

**The Probus Club of Charlbury** Steve Cavell

(01608 811504) [stephen.cavell@yahoo.co.uk](mailto:stephen.cavell@yahoo.co.uk)

**Riverside Festival** - Andy Pickard (01608

810635) [admin@riversidefestival.charlbury.com](mailto:admin@riversidefestival.charlbury.com)

[www.riversidefestival.charlbury.com](http://www.riversidefestival.charlbury.com)

**St Marys C of E Church** Rev Sally Welch

(01608 810230)

**St Teresa's RC Church** Fr Aldo Tapparo

(01608 810576)

**Sustainable Charlbury** - Liz Reason (01608

811212)

**The Bell Hotel** (01608 810278)

**The Bull Inn** (01608 810689)

**Thomas Gifford Charity** - Margie Glasgow

(01608 810161)

**United Nations Association (West**

**Oxfordshire)** - Neil Pakenham-Walsh (01608

811338)

**Wilderness Festival**—

[www.wildernessfestival.com](http://www.wildernessfestival.com)

**Wychway Border Morris** - Teresa Dueter

(01608 810934)

**www.charlbury.info** - Richard Fairhurst



## Charlbury's Police Community Support Officer

**C9837 Wesley Smith**

To speak to us about any concerns you may have:

call **101** if it's a non-emergency

or **999** in an emergency

[www.thamesvalley.police.uk](http://www.thamesvalley.police.uk)

also sign up for free crime alerts  
[www.thamesvalleyalert.co.uk](http://www.thamesvalleyalert.co.uk)

## CHRONICLE ADVERTS

Advertise your business in the  
**Charlbury Chronicle** and reach  
over 1550 residences.

To place an advert please ring  
Graham Jowett on 01608 810666 or  
email:  
[gjowett2015-chronicle@yahoo.co.uk](mailto:gjowett2015-chronicle@yahoo.co.uk)

## MAILING LIST

We have a mailing list for people wishing to receive the *Charlbury Chronicle* who no longer live in the town. **Now £4.50 per four issues; £6 per four issues for overseas subscribers.** Large-print £2.50 for each copy.

Please note that **ALL** cheques for advertising, mailing list or donations should be made payable to *The Charlbury Chronicle* and should be sent to the Treasurer, Dawn Colvin, whose address is in the panel on the right.

## CHARLBURY CHRONICLE CONTACTS

Editor: Susie Finch  
tel: 01608 810861  
e-mail: [editor.chronicle@outlook.com](mailto:editor.chronicle@outlook.com)

Assisted by:  
Julia Caston: 01608 810240  
Barbara Allison: 01608 811262  
and others

Advertising:  
Graham Jowett,  
tel: 01608 810666  
[gjowett2015-chronicle@yahoo.co.uk](mailto:gjowett2015-chronicle@yahoo.co.uk)

Treasurer: Dawn Colvin  
3 Enstone Road, Charlbury OX7 3QR  
tel: 01608 810545

Distribution:  
Brian and Shelagh: 01608 819091  
Robert Caston: 01608 810240

*And thanks to Christopher Betts and Graham Jowett for proof-reading this issue of the Chronicle.*

The **Charlbury Chronicle** is produced and distributed free to every household in Charlbury. All those involved in its preparation work on a voluntary basis.

The **Charlbury Chronicle** aims to be impartial and independent and cannot be held responsible for any of the views expressed in its pages. The editor reserves the right to alter or adapt any articles submitted for publication although hoping to discuss any major changes with the authors first.

The **Charlbury Chronicle** acknowledges the financial support of the many societies, groups and individuals who generously contribute to its funds. We also acknowledge the support of our advertisers and hope that any reader using their services will mention the **Charlbury Chronicle**.

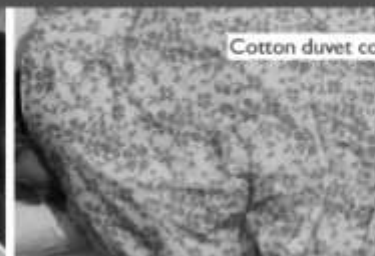
Printed by  
KMS Litho Ltd, Hook Norton, OX15 5LS  
01608 737 640  
[enquiries@kmslitho.co.uk](mailto:enquiries@kmslitho.co.uk)  
[www.kmslitho.co.uk](http://www.kmslitho.co.uk)



EXCEPTIONAL CRAFT MADE ARTICLES FOR THE HOME



Lampshades



Cotton duvet covers



Handloom weaves:  
Rugs & fabrics



Throws &  
much more  
online

To see the products of these people, please visit us: Online & On the A44 in Woodstock



Hand embroidered  
cushion covers



Ikat weaving



Hand made  
baskets, placemats

**onevillage.com**

IN PARTNERSHIP WITH  
CRAFTMAKERS' COOPERATIVES,  
SINCE 1979 ☎ 01608 811811

# SHAW & Co.

Providing legal advice in London and Oxfordshire for 35 years

1 Church Street

Charlbury

Oxfordshire OX7 3PW

Telephone 01608 810100

andrew@shawandcompany.co.uk

**Wills, Probate and Administration**

**Powers of Attorney**

**Executor & Trustee Services - Inheritance Tax Planning**

**Property - House and Flat Conveyancing**

**Commercial Leases and Landlord and Tenant matters**

Commissioners for Oaths

*"...probably the best and most approachable lawyers I have ever used....."*

10 Market Place  
Chipping Norton,  
Oxon OX7 5NA  
Tel: 01608 644808  
Fax 01608 644809



1 Church Street  
Charlbury  
Oxon OX7 3PW  
Tel: 01608 811146  
Fax 01608 810050

22 The Parade  
Oxford Road  
Kidlington,  
Oxford OX5 3DB

[www.fairfaxandcompany.co.uk](http://www.fairfaxandcompany.co.uk)  
[charlbury@fairfaxandcompany.co.uk](mailto:charlbury@fairfaxandcompany.co.uk)

15 High Street  
Bloxham  
Banbury  
Oxon OX15 4LT

**Free Valuations No Sale—No Fee**  
**Specialist Lettings Department**  
**Independent Mortgage Advice**  
**Low Cost Buildings Insurance**

**Fairfax & Co. offer unbeatable value and expert property advice from professionals**